

Datasheet for ABIN6263414

**anti-MT2A antibody**

## 2 Images

[Go to Product page](#)

## Overview

Quantity:	100 µL
Target:	MT2A
Reactivity:	Human, Mouse, Rat
Host:	Rabbit
Clonality:	Polyclonal
Conjugate:	This MT2A antibody is un-conjugated
Application:	ELISA, Immunohistochemistry (IHC), Western Blotting (WB)

## Product Details

Immunogen:	A synthesized peptide derived from human MT2A
Isotype:	IgG
Specificity:	MT2A Antibody detects endogenous levels of total MT2A
Cross-Reactivity:	Human, Mouse (Murine), Rat (Rattus)
Purification:	The antiserum was purified by peptide affinity chromatography using SulfoLink™ Coupling Resin (Thermo Fisher Scientific).

## Target Details

Target:	MT2A
Alternative Name:	MT2A ( <a href="#">MT2A Products</a> )
Background:	Description: Metallothioneins have a high content of cysteine residues that bind various heavy

## Target Details

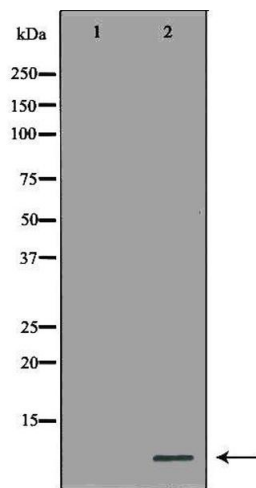
	metals, these proteins are transcriptionally regulated by both heavy metals and glucocorticoids. Gene: MT2A
Molecular Weight:	7kDa
Gene ID:	4502
UniProt:	<a href="#">P02795</a>
Pathways:	<a href="#">Transition Metal Ion Homeostasis</a>

## Application Details

Application Notes:	WB 1:500-1:2000 IHC 1:50-1:200
Restrictions:	For Research Use only

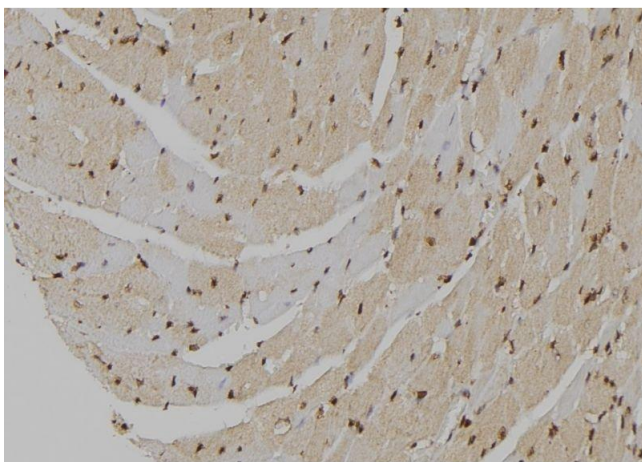
## Handling

Format:	Liquid
Concentration:	1 mg/mL
Buffer:	Rabbit IgG in phosphate buffered saline , pH 7.4, 150 mM NaCl, 0.02 % sodium azide and 50 % glycerol.
Preservative:	Sodium azide
Precaution of Use:	This product contains Sodium azide: a POISONOUS AND HAZARDOUS SUBSTANCE which should be handled by trained staff only.
Storage:	-20 °C
Storage Comment:	Store at -20 °C.Stable for 12 months from date of receipt
Expiry Date:	12 months



### Western Blotting

**Image 1.** Western blot analysis of Hela cell lysate, using MT2A Antibody. The lane on the left is treated with the antigen-specific peptide.



### Immunohistochemistry

**Image 2.** ABIN6277018 at 1/100 staining Mouse heart tissue by IHC-P. The sample was formaldehyde fixed and a heat mediated antigen retrieval step in citrate buffer was performed. The sample was then blocked and incubated with the antibody for 1.5 hours at 22°C. An HRP conjugated goat anti-rabbit antibody was used as the secondary