

Datasheet for ABIN6263438  
**anti-Musculin antibody (Internal Region)**[Go to Product page](#)

## 4 Images

## Overview

Quantity:	100 µL
Target:	Musculin (MSC)
Binding Specificity:	Internal Region
Reactivity:	Human, Rat
Host:	Rabbit
Clonality:	Polyclonal
Conjugate:	This Musculin antibody is un-conjugated
Application:	ELISA, Western Blotting (WB), Immunohistochemistry (IHC), Immunocytochemistry (ICC), Immunofluorescence (IF)

## Product Details

Immunogen:	A synthesized peptide derived from human Musculin, corresponding to a region within the internal amino acids.
Isotype:	IgG
Specificity:	Musculin Antibody detects endogenous levels of total Musculin.
Predicted Reactivity:	Pig,Bovine,Horse,Sheep,Rabbit,Dog,Chicken
Purification:	The antiserum was purified by peptide affinity chromatography using SulfoLink™ Coupling Resin (Thermo Fisher Scientific).

## Target Details

Target:	Musculin (MSC)
---------	----------------

## Target Details

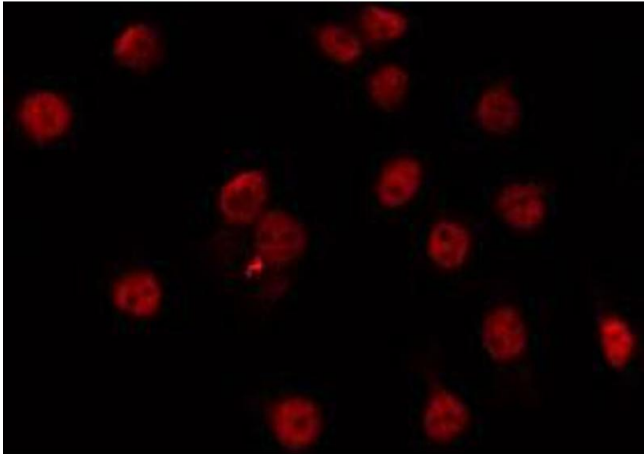
Alternative Name:	MSC ( <a href="#">MSC Products</a> )
Background:	Description: Transcription repressor capable of inhibiting the transactivation capability of TCF3/E47. May play a role in regulating antigen-dependent B-cell differentiation. Gene: MSC
Molecular Weight:	22kDa
Gene ID:	9242
UniProt:	<a href="#">O60682</a>

## Application Details

Application Notes:	WB: 1:500-1:3000, IHC: 1:50-1:200, IF/ICC 1:100-1:500, ELISA(peptide) 1:20000-1:40000
Restrictions:	For Research Use only

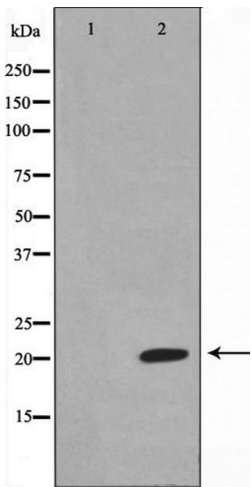
## Handling

Format:	Liquid
Concentration:	1 mg/mL
Buffer:	Rabbit IgG in phosphate buffered saline , pH 7.4, 150 mM NaCl, 0.02 % sodium azide and 50 % glycerol.
Preservative:	Sodium azide
Precaution of Use:	This product contains Sodium azide: a POISONOUS AND HAZARDOUS SUBSTANCE which should be handled by trained staff only.
Storage:	-20 °C
Storage Comment:	Store at -20 °C. Stable for 12 months from date of receipt.
Expiry Date:	12 months



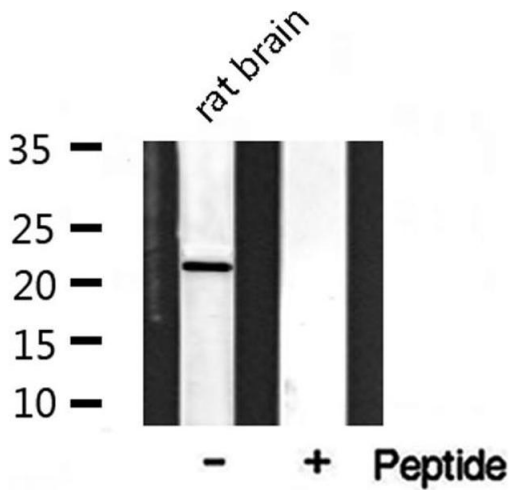
**Immunofluorescence (fixed cells)**

**Image 1.** ABIN6266721 staining Hela by IF/ICC. The sample were fixed with PFA and permeabilized in 0.1% Triton X-100, then blocked in 10% serum for 45 minutes at 25°C. The primary antibody was diluted at 1/200 and incubated with the sample for 1 hour at 37°C. An Alexa Fluor 594 conjugated goat anti-rabbit IgG (H+L) Ab, diluted at 1/600, was used as the secondary antibody.



**Western Blotting**

**Image 2.** Western blot analysis on Jurkat cell lysate using Musculin Antibody, The lane on the left is treated with the antigen-specific peptide.



**Western Blotting**

**Image 3.** Western blot analysis on rat brain lysate using Musculin Antibody

Please check the [product details page](#) for more images. Overall 4 images are available for ABIN6263438.