



[Go to Product page](#)

Datasheet for ABIN6263472
anti-MYL4 antibody (N-Term)

1 Image

Overview

Quantity:	100 µL
Target:	MYL4
Binding Specificity:	N-Term
Reactivity:	Human, Mouse, Rat
Host:	Rabbit
Clonality:	Polyclonal
Conjugate:	This MYL4 antibody is un-conjugated
Application:	Western Blotting (WB), ELISA, Immunohistochemistry (IHC)

Product Details

Immunogen:	A synthesized peptide derived from human MYL4, corresponding to a region within N-terminal amino acids.
Isotype:	IgG
Specificity:	MYL4 Antibody detects endogenous levels of total MYL4.
Predicted Reactivity:	Pig,Horse,Rabbit,Dog,Xenopus
Purification:	The antiserum was purified by peptide affinity chromatography using SulfoLink™ Coupling Resin (Thermo Fisher Scientific).

Target Details

Target:	MYL4
---------	------

Target Details

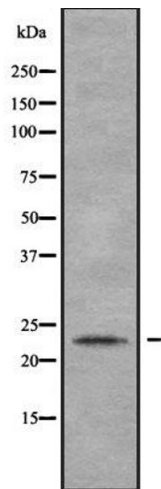
Alternative Name:	MYL4 (MYL4 Products)
Background:	Description: Regulatory light chain of myosin. Does not bind calcium. Gene: MYL4
Molecular Weight:	22 kDa
Gene ID:	4635
UniProt:	P12829
Pathways:	Myometrial Relaxation and Contraction

Application Details

Application Notes:	WB 1:1000-3000, IHC 1:50-1:200, ELISA(peptide) 1:20000-1:40000
Restrictions:	For Research Use only

Handling

Format:	Liquid
Concentration:	1 mg/mL
Buffer:	Rabbit IgG in phosphate buffered saline , pH 7.4, 150 mM NaCl, 0.02 % sodium azide and 50 % glycerol.
Preservative:	Sodium azide
Precaution of Use:	This product contains Sodium azide: a POISONOUS AND HAZARDOUS SUBSTANCE which should be handled by trained staff only.
Storage:	-20 °C
Storage Comment:	Store at -20 °C. Stable for 12 months from date of receipt.
Expiry Date:	12 months



Western Blotting

Image 1. Western blot analysis of MYL4 using HeLa whole cell lysates