



[Go to Product page](#)

Datasheet for ABIN6263477

## anti-Myosin XVI antibody (Internal Region)

### 3 Images

#### Overview

Quantity:	100 µL
Target:	Myosin XVI (MYO16)
Binding Specificity:	Internal Region
Reactivity:	Human, Mouse, Rat
Host:	Rabbit
Clonality:	Polyclonal
Conjugate:	This Myosin XVI antibody is un-conjugated
Application:	Western Blotting (WB), ELISA, Immunohistochemistry (IHC), Immunocytochemistry (ICC), Immunofluorescence (IF)

#### Product Details

Immunogen:	A synthesized peptide derived from human MYO16, corresponding to a region within the internal amino acids.
Isotype:	IgG
Specificity:	MYO16 Antibody detects endogenous levels of total MYO16.
Purification:	The antiserum was purified by peptide affinity chromatography using SulfoLink™ Coupling Resin (Thermo Fisher Scientific).

#### Target Details

Target:	Myosin XVI (MYO16)
Alternative Name:	MYO16 ( <a href="#">MYO16 Products</a> )

## Target Details

---

**Background:** Description: Myosins are actin-based motor molecules with ATPase activity. Unconventional myosins serve in intracellular movements. Their highly divergent tails are presumed to bind to membranous compartments, which would be moved relative to actin filaments. May be involved in targeting of the catalytic subunit of protein phosphatase 1 during brain development. Activates PI3K and concomitantly recruits the WAVE1 complex to the close vicinity of PI3K and regulates neuronal morphogenesis (By similarity).  
Gene: MYO16

**Molecular Weight:** 206 kDa

**Gene ID:** 23026

**UniProt:** [Q9Y6X6](#)

## Application Details

---

**Application Notes:** WB 1:1000-3000, IF/ICC 1:100-1:500, IHC 1:50-1:200, ELISA(peptide) 1:20000-1:40000

**Restrictions:** For Research Use only

## Handling

---

**Format:** Liquid

**Concentration:** 1 mg/mL

**Buffer:** Rabbit IgG in phosphate buffered saline , pH 7.4, 150 mM NaCl, 0.02 % sodium azide and 50 % glycerol.

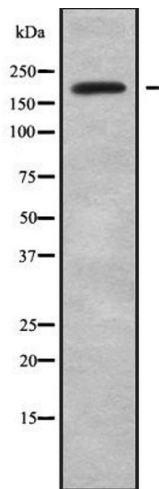
**Preservative:** Sodium azide

**Precaution of Use:** This product contains Sodium azide: a POISONOUS AND HAZARDOUS SUBSTANCE which should be handled by trained staff only.

**Storage:** -20 °C

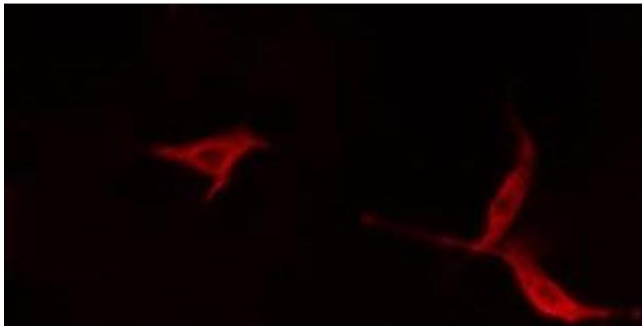
**Storage Comment:** Store at -20 °C. Stable for 12 months from date of receipt.

**Expiry Date:** 12 months



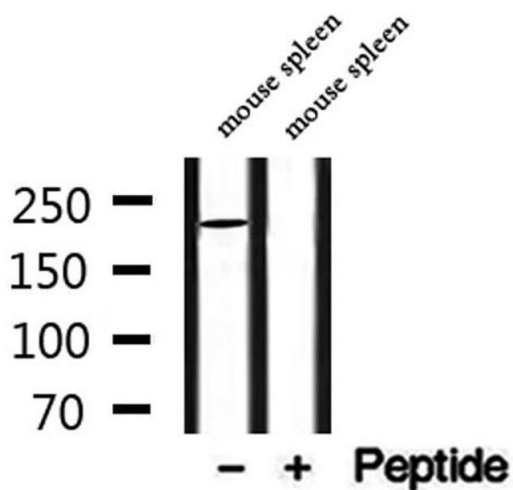
### Western Blotting

**Image 1.** Western blot analysis of MYO16 using Jurkat whole cell lysates



### Immunofluorescence (fixed cells)

**Image 2.** ABIN6279568 staining HepG2 cells by IF/ICC. The sample were fixed with PFA and permeabilized in 0.1% Triton X-100, then blocked in 10% serum for 45 minutes at 25°C. The primary antibody was diluted at 1/200 and incubated with the sample for 1 hour at 37°C. An Alexa Fluor 594 conjugated goat anti-rabbit IgG (H+L) antibody (Cat.# S0006), diluted at 1/600, was used as secondary antibody



### Western Blotting

**Image 3.** Western blot analysis of extracts from mouse spleen, using MYO16 Antibody.