



[Go to Product page](#)

Datasheet for ABIN6263502

anti-SCN2A antibody (Internal Region)

2 Images

Overview

Quantity:	100 µL
Target:	SCN2A
Binding Specificity:	Internal Region
Reactivity:	Human, Rat, Mouse
Host:	Rabbit
Clonality:	Polyclonal
Conjugate:	This SCN2A antibody is un-conjugated
Application:	Immunohistochemistry (IHC), Western Blotting (WB), ELISA

Product Details

Immunogen:	A synthesized peptide derived from human Na ⁺ CP type II alpha, corresponding to a region within the internal amino acids.
Isotype:	IgG
Specificity:	Na ⁺ CP type II alpha Antibody detects endogenous levels of total Na ⁺ CP type II alpha.
Predicted Reactivity:	Pig,Bovine,Horse,Sheep,Rabbit,Dog
Purification:	The antiserum was purified by peptide affinity chromatography using SulfoLink™ Coupling Resin (Thermo Fisher Scientific).

Target Details

Target:	SCN2A
---------	-------

Target Details

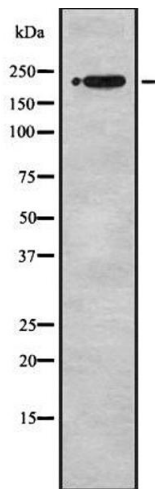
Alternative Name:	SCN2A (SCN2A Products)
Background:	<p>Description: Mediates the voltage-dependent sodium ion permeability of excitable membranes. Assuming opened or closed conformations in response to the voltage difference across the membrane, the protein forms a sodium-selective channel through which Na⁺ ions may pass in accordance with their electrochemical gradient.</p> <p>Gene: SCN2A</p>
Molecular Weight:	227 kDa
Gene ID:	6326
UniProt:	Q99250

Application Details

Application Notes:	WB 1:1000-3000, IHC 1:200, ELISA(peptide) 1:20000-1:40000
Restrictions:	For Research Use only

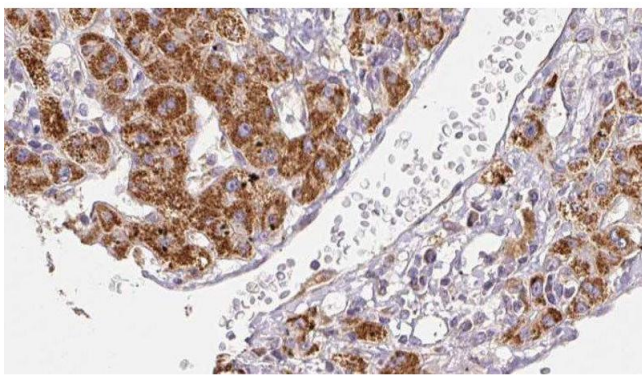
Handling

Format:	Liquid
Concentration:	1 mg/mL
Buffer:	Rabbit IgG in phosphate buffered saline , pH 7.4, 150 mM NaCl, 0.02 % sodium azide and 50 % glycerol.
Preservative:	Sodium azide
Precaution of Use:	This product contains Sodium azide: a POISONOUS AND HAZARDOUS SUBSTANCE which should be handled by trained staff only.
Storage:	-20 °C
Storage Comment:	Store at -20 °C. Stable for 12 months from date of receipt.
Expiry Date:	12 months



Western Blotting

Image 1. Western blot analysis Na⁺ CP type II alpha using Jurkat whole cell lysates



Immunohistochemistry

Image 2. ABIN6278491 at 1/100 staining Human liver cancer tissue by IHC-P. The sample was formaldehyde fixed and a heat mediated antigen retrieval step in citrate buffer was performed. The sample was then blocked and incubated with the antibody for 1.5 hours at 22°C. An HRP conjugated goat anti-rabbit antibody was used as the secondary