



[Go to Product page](#)

Datasheet for ABIN6263504
anti-SCN7A antibody (C-Term)

1 Image

Overview

Quantity:	100 µL
Target:	SCN7A
Binding Specificity:	C-Term
Reactivity:	Human, Mouse
Host:	Rabbit
Clonality:	Polyclonal
Conjugate:	This SCN7A antibody is un-conjugated
Application:	ELISA, Western Blotting (WB)

Product Details

Immunogen:	A synthesized peptide derived from human SCN7A, corresponding to a region within C-terminal amino acids.
Isotype:	IgG
Specificity:	SCN7A Antibody detects endogenous levels of total SCN7A.
Purification:	The antiserum was purified by peptide affinity chromatography using SulfoLink™ Coupling Resin (Thermo Fisher Scientific).

Target Details

Target:	SCN7A
Alternative Name:	SCN7A (SCN7A Products)

Target Details

Background: Description: Mediates the voltage-dependent sodium ion permeability of excitable membranes. Assuming opened or closed conformations in response to the voltage difference across the membrane, the protein forms a sodium-selective channel through which Na⁺ ions may pass in accordance with their electrochemical gradient.

Gene: SCN7A

Molecular Weight: 200kDa

Gene ID: 6332

UniProt: [Q01118](#)

Application Details

Application Notes: WB 1:1000, ELISA(peptide) 1:20000-1:40000

Restrictions: For Research Use only

Handling

Format: Liquid

Concentration: 1 mg/mL

Buffer: Rabbit IgG in phosphate buffered saline , pH 7.4, 150 mM NaCl, 0.02 % sodium azide and 50 % glycerol.

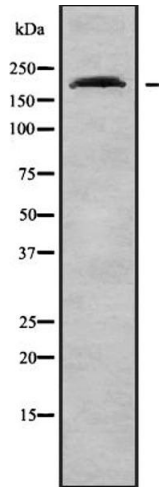
Preservative: Sodium azide

Precaution of Use: This product contains Sodium azide: a POISONOUS AND HAZARDOUS SUBSTANCE which should be handled by trained staff only.

Storage: -20 °C

Storage Comment: Store at -20 °C. Stable for 12 months from date of receipt.

Expiry Date: 12 months



Western Blotting

Image 1. Western blot analysis Na⁺ CP type VIIalpha using RAW264.7 whole cell lysates