



[Go to Product page](#)

Datasheet for ABIN6263515

## anti-NAPRT1 antibody (Internal Region)

### 3 Images

#### Overview

Quantity:	100 µL
Target:	NAPRT1 (NAPRT)
Binding Specificity:	Internal Region
Reactivity:	Human, Mouse, Rat
Host:	Rabbit
Clonality:	Polyclonal
Conjugate:	This NAPRT1 antibody is un-conjugated
Application:	Western Blotting (WB), Immunohistochemistry (IHC), Immunocytochemistry (ICC), Immunofluorescence (IF)

#### Product Details

Immunogen:	A synthesized peptide derived from human NAPRT1, corresponding to a region within the internal amino acids.
Isotype:	IgG
Specificity:	NAPRT1 Antibody detects endogenous levels of total NAPRT1.
Predicted Reactivity:	Pig,Bovine,Horse,Sheep,Dog
Purification:	The antiserum was purified by peptide affinity chromatography using SulfoLink™ Coupling Resin (Thermo Fisher Scientific).

#### Target Details

Target:	NAPRT1 (NAPRT)
---------	----------------

## Target Details

---

Alternative Name:	NAPRT ( <a href="#">NAPRT Products</a> )
Background:	Description: Catalyzes the conversion of nicotinic acid (NA) to NA mononucleotide (NaMN). Essential for NA to increase cellular NAD levels and prevent oxidative stress of the cells. Gene: NAPRT
Molecular Weight:	51 kDa, 56 kDa
Gene ID:	93100
UniProt:	<a href="#">Q6XQN6</a>

## Application Details

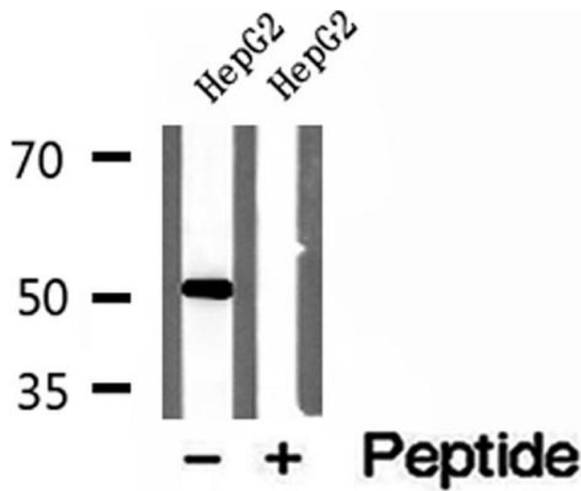
---

Application Notes:	WB 1:500-1:2000, IHC 1:50-1:200, IF/ICC 1:100-1:500
Restrictions:	For Research Use only

## Handling

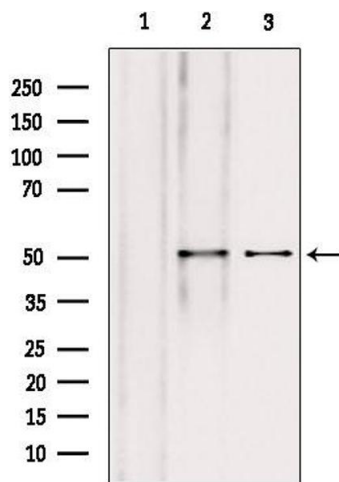
---

Format:	Liquid
Concentration:	1 mg/mL
Buffer:	Rabbit IgG in phosphate buffered saline , pH 7.4, 150 mM NaCl, 0.02 % sodium azide and 50 % glycerol.
Preservative:	Sodium azide
Precaution of Use:	This product contains Sodium azide: a POISONOUS AND HAZARDOUS SUBSTANCE which should be handled by trained staff only.
Storage:	-20 °C
Storage Comment:	Store at -20 °C. Stable for 12 months from date of receipt.
Expiry Date:	12 months



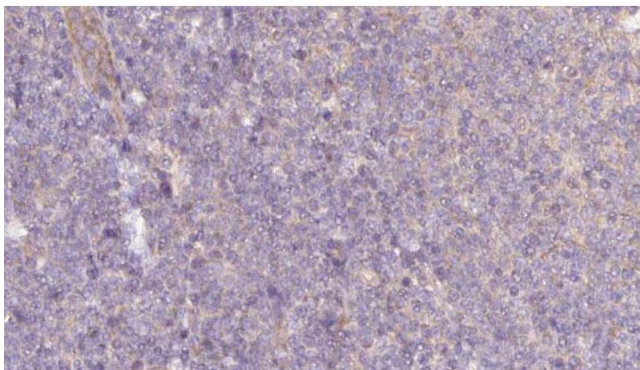
### Western Blotting

**Image 1.** Western blot analysis of extracts of HepG2 cells, using NAPRT1 antibody.



### Western Blotting

**Image 2.** Western blot analysis of extracts from various samples, using NAPRT1 antibody. Lane 1: Hela treated with blocking peptide. Lane 2: Hela; Lane 3: Hepg2;



### Immunohistochemistry

**Image 3.** ABIN6273059 at 1/100 staining Human lymph cancer tissue by IHC-P. The sample was formaldehyde fixed and a heat mediated antigen retrieval step in citrate buffer was performed. The sample was then blocked and incubated with the antibody for 1.5 hours at 22°C. An HRP conjugated goat anti-rabbit antibody was used as the secondary.