



[Go to Product page](#)

Datasheet for ABIN6263537
anti-NCK1 antibody (Internal Region)

2 Images

Overview

| | |
|----------------------|--|
| Quantity: | 100 µL |
| Target: | NCK1 |
| Binding Specificity: | Internal Region |
| Reactivity: | Human, Mouse, Rat |
| Host: | Rabbit |
| Clonality: | Polyclonal |
| Conjugate: | This NCK1 antibody is un-conjugated |
| Application: | Western Blotting (WB), Immunohistochemistry (IHC), ELISA, Immunofluorescence (IF), Immunocytochemistry (ICC) |

Product Details

| | |
|-----------------------|---|
| Immunogen: | A synthesized peptide derived from human NCK1, corresponding to a region within the internal amino acids. |
| Isotype: | IgG |
| Specificity: | NCK1 Antibody detects endogenous levels of total NCK1. |
| Predicted Reactivity: | Pig,Bovine,Horse,Sheep,Rabbit,Dog |
| Purification: | The antiserum was purified by peptide affinity chromatography using SulfoLink™ Coupling Resin (Thermo Fisher Scientific). |

Target Details

| | |
|---------|------|
| Target: | NCK1 |
|---------|------|

Target Details

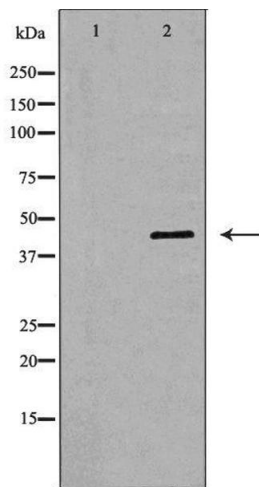
| | |
|-------------------|---|
| Alternative Name: | NCK1 (NCK1 Products) |
| Background: | <p>Description: Adapter protein which associates with tyrosine-phosphorylated growth factor receptors, such as KDR and PDGFRB, or their cellular substrates. Maintains low levels of EIF2S1 phosphorylation by promoting its dephosphorylation by PP1. Plays a role in the DNA damage response, not in the detection of the damage by ATM/ATR, but for efficient activation of downstream effectors, such as that of CHEK2. Plays a role in ELK1-dependent transcriptional activation in response to activated Ras signaling. Modulates the activation of EIF2AK2/PKR by dsRNA. May play a role in cell adhesion and migration through interaction with ephrin receptors.</p> <p>Gene: NCK1</p> |
| Molecular Weight: | 43kDa |
| Gene ID: | 4690 |
| UniProt: | P16333 |
| Pathways: | TCR Signaling , Regulation of Actin Filament Polymerization , Signaling Events mediated by VEGFR1 and VEGFR2 , VEGFR1 Specific Signals |

Application Details

| | |
|--------------------|---|
| Application Notes: | WB 1:500-1:2000, IHC 1:50-1:200, IF/ICC 1:100-1:500, ELISA(peptide) 1:20000-1:40000 |
| Restrictions: | For Research Use only |

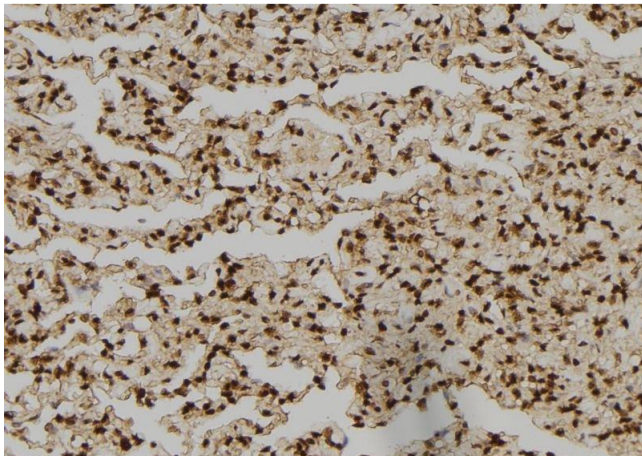
Handling

| | |
|--------------------|--|
| Format: | Liquid |
| Concentration: | 1 mg/mL |
| Buffer: | Rabbit IgG in phosphate buffered saline , pH 7.4, 150 mM NaCl, 0.02 % sodium azide and 50 % glycerol. |
| Preservative: | Sodium azide |
| Precaution of Use: | This product contains Sodium azide: a POISONOUS AND HAZARDOUS SUBSTANCE which should be handled by trained staff only. |
| Storage: | -20 °C |
| Storage Comment: | Store at -20 °C. Stable for 12 months from date of receipt. |



Western Blotting

Image 1. Western blot analysis of brain lysate using NCK1 antibody. The lane on the left is treated with the antigen-specific peptide.



Immunohistochemistry

Image 2. ABIN6276450 at 1/100 staining Human lung tissue by IHC-P. The sample was formaldehyde fixed and a heat mediated antigen retrieval step in citrate buffer was performed. The sample was then blocked and incubated with the antibody for 1.5 hours at 22;ãC. An HRP conjugated goat anti-rabbit antibody was used as the secondary