

Datasheet for ABIN6263569  
**anti-NDUFC1 antibody (C-Term)**[Go to Product page](#)

## 2 Images

## Overview

Quantity:	100 µL
Target:	NDUFC1
Binding Specificity:	C-Term
Reactivity:	Human, Mouse, Rat
Host:	Rabbit
Clonality:	Polyclonal
Conjugate:	This NDUFC1 antibody is un-conjugated
Application:	ELISA, Immunohistochemistry (IHC), Western Blotting (WB), Immunofluorescence (IF), Immunocytochemistry (ICC)

## Product Details

Immunogen:	A synthesized peptide derived from human NDUFC1, corresponding to a region within C-terminal amino acids.
Isotype:	IgG
Specificity:	NDUFC1 Antibody detects endogenous levels of total NDUFC1.
Predicted Reactivity:	Pig,Bovine,Horse,Rabbit
Purification:	The antiserum was purified by peptide affinity chromatography using SulfoLink™ Coupling Resin (Thermo Fisher Scientific).

## Target Details

Target:	NDUFC1
---------	--------

## Target Details

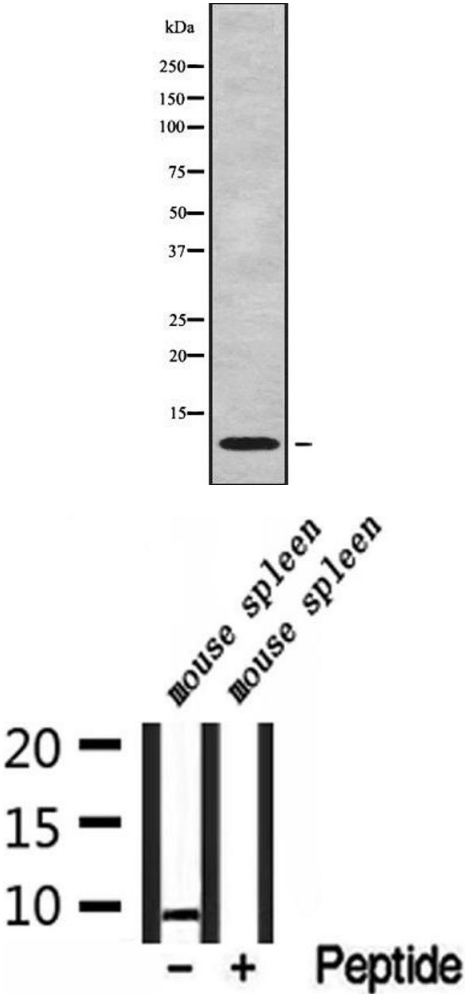
Alternative Name:	NDUFC1 ( <a href="#">NDUFC1 Products</a> )
Background:	<p>Description: Accessory subunit of the mitochondrial membrane respiratory chain NADH dehydrogenase (Complex I), that is believed not to be involved in catalysis. Complex I functions in the transfer of electrons from NADH to the respiratory chain. The immediate electron acceptor for the enzyme is believed to be ubiquinone.</p> <p>Gene: NDUFC1</p>
Molecular Weight:	9kDa
Gene ID:	4717
UniProt:	<a href="#">O43677</a>

## Application Details

Application Notes:	WB 1:1000-3000, IF/ICC 1:100-1:500, IHC 1:50-1:200, ELISA(peptide) 1:20000-1:40000
Restrictions:	For Research Use only

## Handling

Format:	Liquid
Concentration:	1 mg/mL
Buffer:	Rabbit IgG in phosphate buffered saline , pH 7.4, 150 mM NaCl, 0.02 % sodium azide and 50 % glycerol.
Preservative:	Sodium azide
Precaution of Use:	This product contains Sodium azide: a POISONOUS AND HAZARDOUS SUBSTANCE which should be handled by trained staff only.
Storage:	-20 °C
Storage Comment:	Store at -20 °C. Stable for 12 months from date of receipt.
Expiry Date:	12 months



Western Blotting

**Image 1.** Western blot analysis NDUFC1 using Jurkat whole cell lysates

Western Blotting

**Image 2.** Western blot analysis of extracts from mouse spleen, using NDUFC1 Antibody.