

Datasheet for ABIN6263604
anti-Sialidase 4 antibody (Internal Region)[Go to Product page](#)

3 Images

Overview

Quantity:	100 µL
Target:	Sialidase 4 (NEU4)
Binding Specificity:	Internal Region
Reactivity:	Human, Mouse, Rat
Host:	Rabbit
Clonality:	Polyclonal
Conjugate:	This Sialidase 4 antibody is un-conjugated
Application:	Western Blotting (WB), Immunohistochemistry (IHC)

Product Details

Immunogen:	A synthesized peptide derived from human NEU4, corresponding to a region within the internal amino acids.
Isotype:	IgG
Specificity:	NEU4 Antibody detects endogenous levels of total NEU4.
Purification:	The antiserum was purified by peptide affinity chromatography using SulfoLink™ Coupling Resin (Thermo Fisher Scientific).

Target Details

Target:	Sialidase 4 (NEU4)
Alternative Name:	NEU4 (NEU4 Products)

Target Details

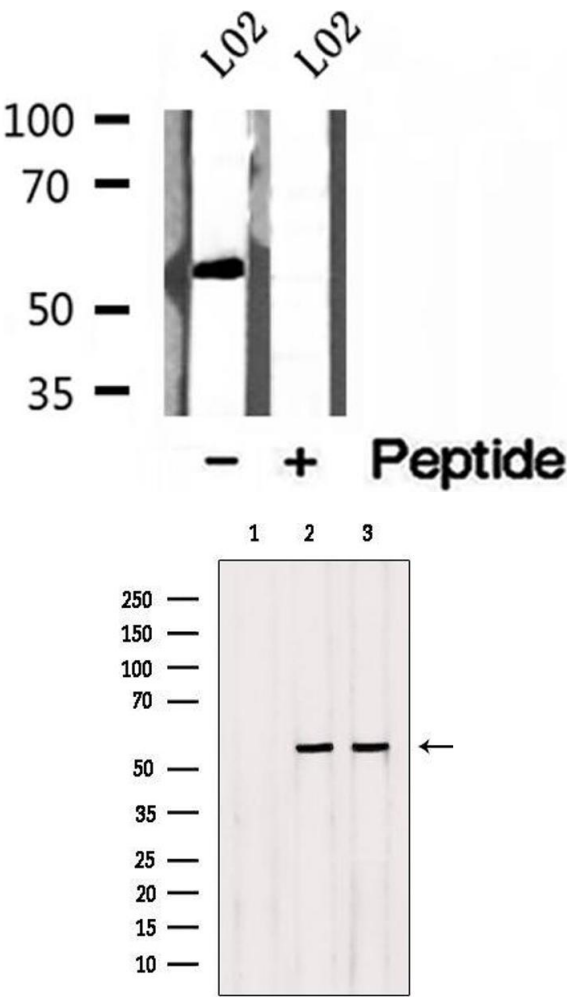
Background:	Description: May function in lysosomal catabolism of sialylated glycoconjugates. Has sialidase activity towards synthetic substrates, such as 2'-(4-methylumbelliferyl)-alpha-D-N-acetylneuraminic acid (4-MU-NANA or 4MU-NeuAc). Has a broad substrate specificity being active on glycoproteins, oligosaccharides and sialylated glycolipids. Gene: NEU4
Molecular Weight:	52-55 kDa
Gene ID:	129807
UniProt:	Q8WWR8

Application Details

Application Notes:	WB 1:500-1:2000, IHC 1:50-1:200
Restrictions:	For Research Use only

Handling

Format:	Liquid
Concentration:	1 mg/mL
Buffer:	Rabbit IgG in phosphate buffered saline , pH 7.4, 150 mM NaCl, 0.02 % sodium azide and 50 % glycerol.
Preservative:	Sodium azide
Precaution of Use:	This product contains Sodium azide: a POISONOUS AND HAZARDOUS SUBSTANCE which should be handled by trained staff only.
Storage:	-20 °C
Storage Comment:	Store at -20 °C. Stable for 12 months from date of receipt.
Expiry Date:	12 months

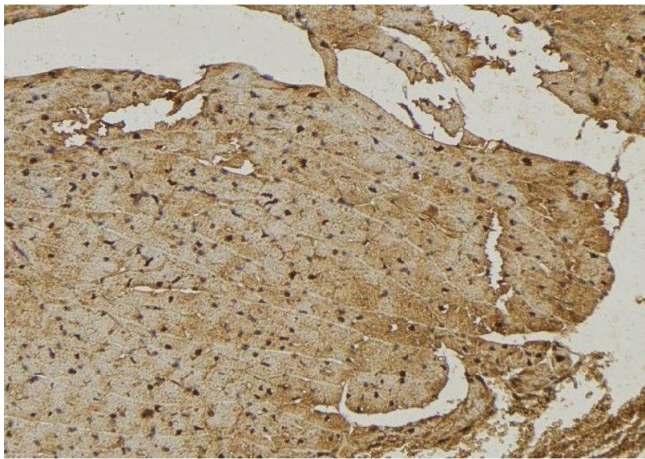


Western Blotting

Image 1. Western blot analysis of extracts of L02 cells, using NEU4 antibody.

Western Blotting

Image 2. Western blot analysis of extracts from Rat heart,Hybridoma cells, using NEU4 Antibody. Lane 1: Rat heart tissue treated with the blocking peptide;Lane 2: Rat heart tissue;Lane 3: Hybridoma cells.



Immunohistochemistry

Image 3. ABIN6272967 at 1/100 staining Mouse muscle tissue by IHC-P. The sample was formaldehyde fixed and a heat mediated antigen retrieval step in citrate buffer was performed. The sample was then blocked and incubated with the antibody for 1.5 hours at 22°C. An HRP conjugated goat anti-rabbit antibody was used as the secondary