

Datasheet for ABIN6263606  
**anti-NEURL antibody (Internal Region)**[Go to Product page](#)

## 2 Images

## Overview

Quantity:	100 µL
Target:	NEURL
Binding Specificity:	Internal Region
Reactivity:	Human
Host:	Rabbit
Clonality:	Polyclonal
Conjugate:	This NEURL antibody is un-conjugated
Application:	Western Blotting (WB), ELISA, Immunofluorescence (IF), Immunocytochemistry (ICC)

## Product Details

Immunogen:	A synthesized peptide derived from human Neuralized-1, corresponding to a region within the internal amino acids.
Isotype:	IgG
Specificity:	Neuralized-1 Antibody detects endogenous levels of total Neuralized-1.
Predicted Reactivity:	Pig,Bovine,Rabbit
Purification:	The antiserum was purified by peptide affinity chromatography using SulfoLink™ Coupling Resin (Thermo Fisher Scientific).

## Target Details

Target:	NEURL
---------	-------

## Target Details

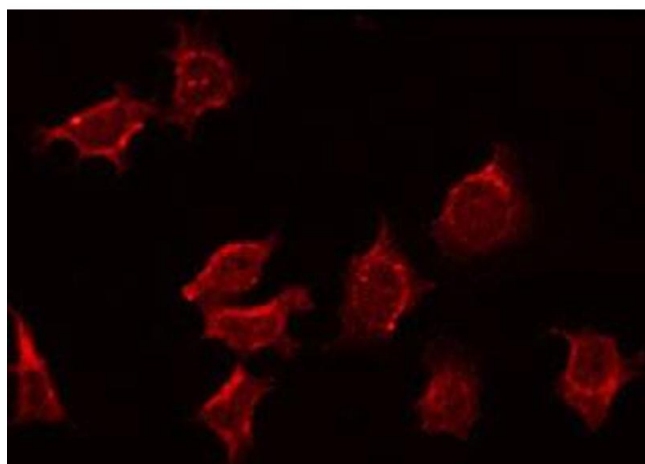
Alternative Name:	NEURL1 ( <a href="#">NEURL Products</a> )
Background:	<p>Description: Plays a role in hippocampal-dependent synaptic plasticity, learning and memory. Involved in the formation of spines and functional synaptic contacts by modulating the translational activity of the cytoplasmic polyadenylation element-binding protein CPEB3. Promotes ubiquitination of CPEB3, and hence induces CPEB3-dependent mRNA translation activation of glutamate receptor GRIA1 and GRIA2. Can function as an E3 ubiquitin-protein ligase to activate monoubiquitination of JAG1 (in vitro), thereby regulating the Notch pathway. Acts as a tumor suppressor, inhibits malignant cell transformation of medulloblastoma (MB) cells by inhibiting the Notch signaling pathway.</p> <p>Gene: NEURL1</p>
Molecular Weight:	62kDa
Gene ID:	9148
UniProt:	<a href="#">O76050</a>
Pathways:	<a href="#">Notch Signaling</a> , <a href="#">EGFR Signaling Pathway</a>

## Application Details

Application Notes:	WB 1:1000, IF/ICC 1:100-1:500, ELISA(peptide) 1:20000-1:40000
Restrictions:	For Research Use only

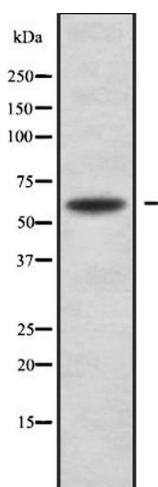
## Handling

Format:	Liquid
Concentration:	1 mg/mL
Buffer:	Rabbit IgG in phosphate buffered saline , pH 7.4, 150 mM NaCl, 0.02 % sodium azide and 50 % glycerol.
Preservative:	Sodium azide
Precaution of Use:	This product contains Sodium azide: a POISONOUS AND HAZARDOUS SUBSTANCE which should be handled by trained staff only.
Storage:	-20 °C
Storage Comment:	Store at -20 °C. Stable for 12 months from date of receipt.
Expiry Date:	12 months



#### Immunofluorescence (fixed cells)

**Image 1.** ABIN6272358 staining MCF7 by IF/ICC. The sample were fixed with PFA and permeabilized in 0.1% Triton X-100, then blocked in 10% serum for 45 minutes at 25°C. The primary antibody was diluted at 1/200 and incubated with the sample for 1 hour at 37°C. An Alexa Fluor 594 conjugated goat anti-rabbit IgG (H+L) Ab, diluted at 1/600, was used as the secondary antibody.



#### Western Blotting

**Image 2.** Western blot analysis Neuralized-1 using MCF7 whole cell lysates