

Datasheet for ABIN6263644  
**anti-NKRF antibody (N-Term)**[Go to Product page](#)

## 1 Image

## Overview

Quantity:	100 µL
Target:	NKRF
Binding Specificity:	N-Term
Reactivity:	Human, Mouse
Host:	Rabbit
Clonality:	Polyclonal
Conjugate:	This NKRF antibody is un-conjugated
Application:	Western Blotting (WB), ELISA

## Product Details

Immunogen:	A synthesized peptide derived from human NKRF, corresponding to a region within N-terminal amino acids.
Isotype:	IgG
Specificity:	NKRF Antibody detects endogenous levels of total NKRF.
Predicted Reactivity:	Pig,Bovine,Horse,Sheep,Rabbit,Dog
Purification:	The antiserum was purified by peptide affinity chromatography using SulfoLink™ Coupling Resin (Thermo Fisher Scientific).

## Target Details

Target:	NKRF
---------	------

## Target Details

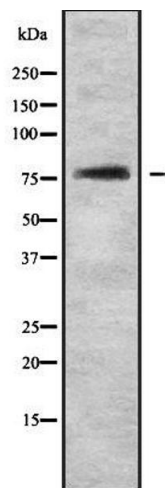
Alternative Name:	NKRF ( <a href="#">NKRF Products</a> )
Background:	<p>Description: Interacts with a specific negative regulatory element (NRE) 5'-AATTCCTCTGA-3' to mediate transcriptional repression of certain NK-kappa-B responsive genes. Involved in the constitutive silencing of the interferon beta promoter, independently of the virus-induced signals, and in the inhibition of the basal and cytokine-induced iNOS promoter activity. Also involved in the regulation of IL-8 transcription.</p> <p>Gene: NKRF</p>
Molecular Weight:	79 kDa
Gene ID:	55922
UniProt:	<a href="#">015226</a>

## Application Details

Application Notes:	WB 1:1000-3000, ELISA(peptide) 1:20000-1:40000
Restrictions:	For Research Use only

## Handling

Format:	Liquid
Concentration:	1 mg/mL
Buffer:	Rabbit IgG in phosphate buffered saline , pH 7.4, 150 mM NaCl, 0.02 % sodium azide and 50 % glycerol.
Preservative:	Sodium azide
Precaution of Use:	This product contains Sodium azide: a POISONOUS AND HAZARDOUS SUBSTANCE which should be handled by trained staff only.
Storage:	-20 °C
Storage Comment:	Store at -20 °C. Stable for 12 months from date of receipt.
Expiry Date:	12 months



Western Blotting

**Image 1.** Western blot analysis NKRF using NIH-3T3 whole cell lysates