

## Datasheet for ABIN6263646 anti-Nkx2-2 antibody (Internal Region)

[Go to Product page](#)

### 1 Image

#### Overview

Quantity:	100 µL
Target:	Nkx2-2
Binding Specificity:	Internal Region
Reactivity:	Human, Mouse, Rat
Host:	Rabbit
Clonality:	Polyclonal
Conjugate:	This Nkx2-2 antibody is un-conjugated
Application:	Immunofluorescence (IF), Western Blotting (WB), ELISA, Immunocytochemistry (ICC)

#### Product Details

Immunogen:	A synthesized peptide derived from human NKX22, corresponding to a region within the internal amino acids.
Isotype:	IgG
Specificity:	NKX22 Antibody detects endogenous levels of total NKX22.
Predicted Reactivity:	Pig,Bovine,Horse,Rabbit,Dog,Xenopus
Purification:	The antiserum was purified by peptide affinity chromatography using SulfoLink™ Coupling Resin (Thermo Fisher Scientific).

#### Target Details

Target:	Nkx2-2
---------	--------

## Target Details

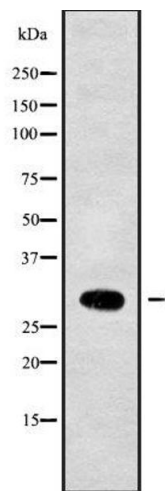
Alternative Name:	NKX2-2 ( <a href="#">Nkx2-2 Products</a> )
Background:	<p>Description: Acts as a transcriptional activator. Required for the maintenance of NEUROD1 expression in the hormone-producing endocrine cells of the pancreas. May be involved in specifying diencephalic neuromeric boundaries, and in controlling the expression of genes that play a role in axonal guidance. Associates with chromatin at the NEUROD1 promoter region. Binds to a subset of consensus elements within the NEUROD1 promoter (By similarity).</p> <p>Gene: NKX2-2</p>
Molecular Weight:	30 kDa
Gene ID:	4821
UniProt:	<a href="#">O95096</a>
Pathways:	<a href="#">Dopaminergic Neurogenesis</a>

## Application Details

Application Notes:	WB 1:1000-3000, IF/ICC 1:100-1:500, ELISA(peptide) 1:20000-1:40000
Restrictions:	For Research Use only

## Handling

Format:	Liquid
Concentration:	1 mg/mL
Buffer:	Rabbit IgG in phosphate buffered saline , pH 7.4, 150 mM NaCl, 0.02 % sodium azide and 50 % glycerol.
Preservative:	Sodium azide
Precaution of Use:	This product contains Sodium azide: a POISONOUS AND HAZARDOUS SUBSTANCE which should be handled by trained staff only.
Storage:	-20 °C
Storage Comment:	Store at -20 °C. Stable for 12 months from date of receipt.
Expiry Date:	12 months



Western Blotting

**Image 1.** Western blot analysis NKX22 using Jurkat whole cell lysates