

Datasheet for ABIN6263651  
**anti-NKX6-1 antibody (Internal Region)**

## 2 Images

[Go to Product page](#)

## Overview

Quantity:	100 µL
Target:	NKX6-1
Binding Specificity:	Internal Region
Reactivity:	Human, Mouse, Rat
Host:	Rabbit
Clonality:	Polyclonal
Conjugate:	This NKX6-1 antibody is un-conjugated
Application:	Western Blotting (WB), ELISA, Immunocytochemistry (ICC), Immunofluorescence (IF)

## Product Details

Immunogen:	A synthesized peptide derived from human NKX61, corresponding to a region within the internal amino acids.
Isotype:	IgG
Specificity:	NKX61 Antibody detects endogenous levels of total NKX61.
Predicted Reactivity:	Pig,Bovine,Horse,Rabbit,Dog,Xenopus
Purification:	The antiserum was purified by peptide affinity chromatography using SulfoLink™ Coupling Resin (Thermo Fisher Scientific).

## Target Details

Target:	NKX6-1
---------	--------

## Target Details

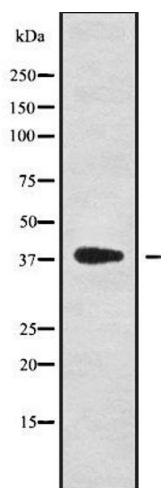
Alternative Name:	NKX6-1 ( <a href="#">NKX6-1 Products</a> )
Background:	<p>Description: Transcription factor which binds to specific A/T-rich DNA sequences in the promoter regions of a number of genes. Involved in transcriptional regulation in islet beta cells. Binds to the insulin promoter and is involved in regulation of the insulin gene. Together with NKX2-2 and IRX3 acts to restrict the generation of motor neurons to the appropriate region of the neural tube. Belongs to the class II proteins of neuronal progenitor factors, which are induced by SHH signals (By similarity).</p> <p>Gene: NKX6-1</p>
Molecular Weight:	38 kDa
Gene ID:	4825
UniProt:	<a href="#">P78426</a>
Pathways:	<a href="#">Dopaminergic Neurogenesis, Positive Regulation of Peptide Hormone Secretion</a>

## Application Details

Application Notes:	WB 1:1000-3000, IF/ICC 1:100-1:500, ELISA(peptide) 1:20000-1:40000
Restrictions:	For Research Use only

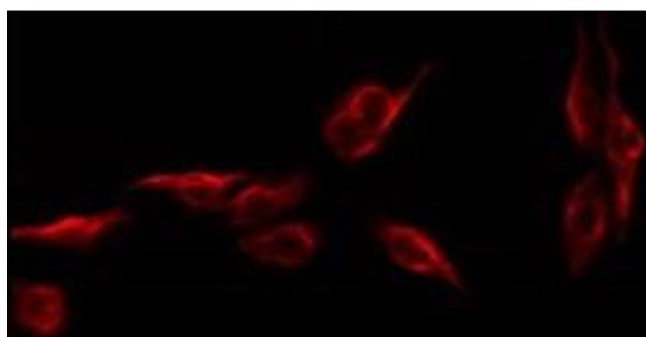
## Handling

Format:	Liquid
Concentration:	1 mg/mL
Buffer:	Rabbit IgG in phosphate buffered saline , pH 7.4, 150 mM NaCl, 0.02 % sodium azide and 50 % glycerol.
Preservative:	Sodium azide
Precaution of Use:	This product contains Sodium azide: a POISONOUS AND HAZARDOUS SUBSTANCE which should be handled by trained staff only.
Storage:	-20 °C
Storage Comment:	Store at -20 °C. Stable for 12 months from date of receipt.
Expiry Date:	12 months



### Western Blotting

**Image 1.** Western blot analysis NKX61 using HepG2 whole cell lysates



### Immunofluorescence (fixed cells)

**Image 2.** ABIN6279501 staining CoLo by IF/ICC. The sample were fixed with PFA and permeabilized in 0.1% Triton X-100, then blocked in 10% serum for 45 minutes at 25°C. The primary antibody was diluted at 1/200 and incubated with the sample for 1 hour at 37°C. An Alexa Fluor 594 conjugated goat anti-rabbit IgG (H+L) Ab, diluted at 1/600, was used as the secondary antibody