

Datasheet for ABIN6263663
anti-GRIN2C antibody (Internal Region)[Go to Product page](#)

2 Images

Overview

Quantity:	100 µL
Target:	GRIN2C
Binding Specificity:	Internal Region
Reactivity:	Human
Host:	Rabbit
Clonality:	Polyclonal
Conjugate:	This GRIN2C antibody is un-conjugated
Application:	Western Blotting (WB), ELISA, Immunohistochemistry (IHC)

Product Details

Immunogen:	A synthesized peptide derived from human NMDA epsilon 3, corresponding to a region within the internal amino acids.
Isotype:	IgG
Specificity:	NMDA epsilon 3 Antibody detects endogenous levels of total NMDA epsilon 3.
Predicted Reactivity:	Pig,Bovine,Sheep,Rabbit,Dog
Purification:	The antiserum was purified by peptide affinity chromatography using SulfoLink™ Coupling Resin (Thermo Fisher Scientific).

Target Details

Target:	GRIN2C
---------	--------

Target Details

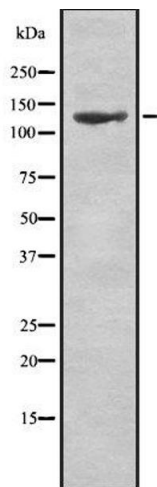
Alternative Name:	GRIN2C (GRIN2C Products)
Background:	<p>Description: Component of NMDA receptor complexes that function as heterotetrameric, ligand-gated ion channels with high calcium permeability and voltage-dependent sensitivity to magnesium. Channel activation requires binding of the neurotransmitter glutamate to the epsilon subunit, glycine binding to the zeta subunit, plus membrane depolarization to eliminate channel inhibition by Mg²⁺ (PubMed:26875626). Sensitivity to glutamate and channel kinetics depend on the subunit composition (Probable). Plays a role in regulating the balance between excitatory and inhibitory activity of pyramidal neurons in the prefrontal cortex. Contributes to the slow phase of excitatory postsynaptic current, long-term synaptic potentiation, and learning (By similarity).</p> <p>Gene: GRIN2C</p>
Molecular Weight:	134 kDa
Gene ID:	2905
UniProt:	Q14957
Pathways:	Synaptic Membrane

Application Details

Application Notes:	WB 1:1000-3000, IHC 1:200, ELISA(peptide) 1:20000-1:40000
Restrictions:	For Research Use only

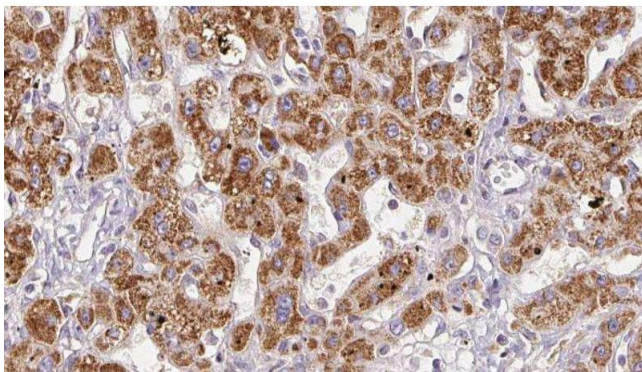
Handling

Format:	Liquid
Concentration:	1 mg/mL
Buffer:	Rabbit IgG in phosphate buffered saline , pH 7.4, 150 mM NaCl, 0.02 % sodium azide and 50 % glycerol.
Preservative:	Sodium azide
Precaution of Use:	This product contains Sodium azide: a POISONOUS AND HAZARDOUS SUBSTANCE which should be handled by trained staff only.
Storage:	-20 °C
Storage Comment:	Store at -20 °C. Stable for 12 months from date of receipt.



Western Blotting

Image 1. Western blot analysis NMDAε3 using K562 whole cell lysates



Immunohistochemistry

Image 2. ABIN6278496 at 1/100 staining Human liver cancer tissue by IHC-P. The sample was formaldehyde fixed and a heat mediated antigen retrieval step in citrate buffer was performed. The sample was then blocked and incubated with the antibody for 1.5 hours at 22°C. An HRP conjugated goat anti-rabbit antibody was used as the secondary