



Datasheet for ABIN6263677  
**anti-NOB1 antibody (C-Term)**



[Go to Product page](#)

3 Images

Overview

Quantity:	100 µL
Target:	NOB1
Binding Specificity:	C-Term
Reactivity:	Human, Mouse, Rat
Host:	Rabbit
Clonality:	Polyclonal
Conjugate:	This NOB1 antibody is un-conjugated
Application:	Western Blotting (WB), Immunohistochemistry (IHC)

Product Details

Immunogen:	A synthesized peptide derived from human NOB1, corresponding to a region within C-terminal amino acids.
Isotype:	IgG
Specificity:	NOB1 Antibody detects endogenous levels of total NOB1.
Predicted Reactivity:	Pig,Zebrafish,Bovine,Horse,Sheep,Rabbit,Dog,Chicken,Xenopus
Purification:	The antiserum was purified by peptide affinity chromatography using SulfoLink™ Coupling Resin (Thermo Fisher Scientific).

Target Details

Target:	NOB1
---------	------

## Target Details

---

Alternative Name:	NOB1 ( <a href="#">NOB1 Products</a> )
Background:	Description: May play a role in mRNA degradation. Gene: NOB1
Molecular Weight:	47-50 kDa
Gene ID:	28987
UniProt:	<a href="#">Q9ULX3</a>
Pathways:	<a href="#">Protein targeting to Nucleus</a>

## Application Details

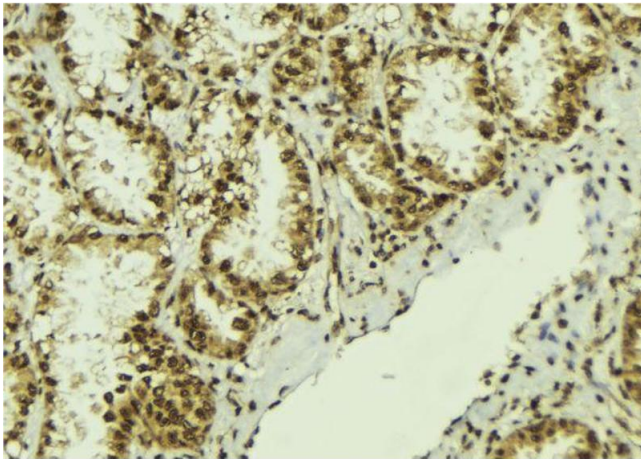
---

Application Notes:	WB 1:500-1:2000, IHC 1:50-1:200
Restrictions:	For Research Use only

## Handling

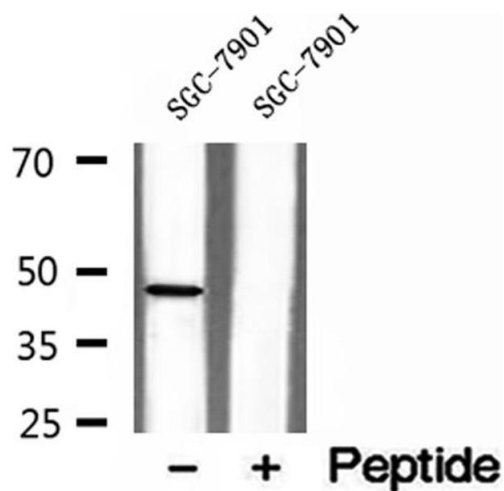
---

Format:	Liquid
Concentration:	1 mg/mL
Buffer:	Rabbit IgG in phosphate buffered saline , pH 7.4, 150 mM NaCl, 0.02 % sodium azide and 50 % glycerol.
Preservative:	Sodium azide
Precaution of Use:	This product contains Sodium azide: a POISONOUS AND HAZARDOUS SUBSTANCE which should be handled by trained staff only.
Storage:	-20 °C
Storage Comment:	Store at -20 °C. Stable for 12 months from date of receipt.
Expiry Date:	12 months



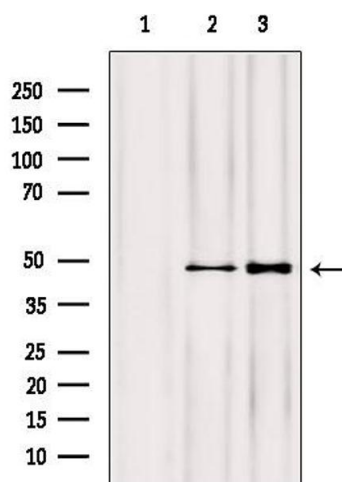
### Immunohistochemistry

**Image 1.** ABIN6273060 at 1/100 staining Human lung tissue by IHC-P. The sample was formaldehyde fixed and a heat mediated antigen retrieval step in citrate buffer was performed. The sample was then blocked and incubated with the antibody for 1.5 hours at 22°C. An HRP conjugated goat anti-rabbit antibody was used as the secondary.



### Western Blotting

**Image 2.** Western blot analysis of extracts of SGC-7901 cells, using NOB1 antibody.



### Western Blotting

**Image 3.** Western blot analysis of extracts from various samples, using NOB1 antibody. Lane 1: Hela treated with blocking peptide. Lane 2: Hela; Lane 3: Hepg2;