

Datasheet for ABIN6263697
anti-NPC1L1 antibody (N-Term)[Go to Product page](#)

1 Image

Overview

Quantity:	100 µL
Target:	NPC1L1
Binding Specificity:	N-Term
Reactivity:	Human
Host:	Rabbit
Clonality:	Polyclonal
Conjugate:	This NPC1L1 antibody is un-conjugated
Application:	Western Blotting (WB), ELISA, Immunocytochemistry (ICC), Immunofluorescence (IF)

Product Details

Immunogen:	A synthesized peptide derived from human NPC1L1, corresponding to a region within N-terminal amino acids.
Isotype:	IgG
Specificity:	NPC1L1 Antibody detects endogenous levels of total NPC1L1.
Predicted Reactivity:	Pig,Zebrafish,Bovine,Horse,Sheep,Rabbit,Dog,Xenopus
Purification:	The antiserum was purified by peptide affinity chromatography using SulfoLink™ Coupling Resin (Thermo Fisher Scientific).

Target Details

Target:	NPC1L1
---------	--------

Target Details

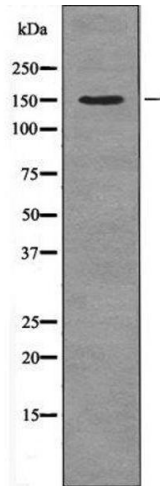
Alternative Name:	NPC1L1 (NPC1L1 Products)
Background:	<p>Description: Plays a major role in cholesterol homeostasis. Is critical for the uptake of cholesterol across the plasma membrane of the intestinal enterocyte. Is the direct molecular target of ezetimibe, a drug that inhibits cholesterol absorption. Lack of activity leads to multiple lipid transport defects. The protein may have a function in the transport of multiple lipids and their homeostasis, and may play a critical role in regulating lipid metabolism. Acts as a negative regulator of NPC2 and down-regulates its expression and secretion by inhibiting its maturation and accelerating its degradation.</p> <p>Gene: NPC1L1</p>
Molecular Weight:	149 kDa
Gene ID:	29881
UniProt:	Q9UHC9

Application Details

Application Notes:	WB 1:1000-3000, IF/ICC 1:100-1:500, ELISA(peptide) 1:20000-1:40000
Restrictions:	For Research Use only

Handling

Format:	Liquid
Concentration:	1 mg/mL
Buffer:	Rabbit IgG in phosphate buffered saline , pH 7.4, 150 mM NaCl, 0.02 % sodium azide and 50 % glycerol.
Preservative:	Sodium azide
Precaution of Use:	This product contains Sodium azide: a POISONOUS AND HAZARDOUS SUBSTANCE which should be handled by trained staff only.
Storage:	-20 °C
Storage Comment:	Store at -20 °C. Stable for 12 months from date of receipt.
Expiry Date:	12 months



Western Blotting

Image 1. Western blot analysis NPC1L1 using COLO205 whole cell lysates