

Datasheet for ABIN6263714
anti-NR1H2 antibody (Internal Region)[Go to Product page](#)

2 Images

Overview

Quantity:	100 µL
Target:	NR1H2
Binding Specificity:	Internal Region
Reactivity:	Human, Mouse, Rat, Pig
Host:	Rabbit
Clonality:	Polyclonal
Conjugate:	This NR1H2 antibody is un-conjugated
Application:	Western Blotting (WB), Immunohistochemistry (IHC)

Product Details

Immunogen:	A synthesized peptide derived from human NR1H2, corresponding to a region within the internal amino acids.
Isotype:	IgG
Specificity:	NR1H2 Antibody detects endogenous levels of total NR1H2.
Predicted Reactivity:	Bovine,Horse,Sheep,Rabbit,Dog,Xenopus
Purification:	The antiserum was purified by peptide affinity chromatography using SulfoLink™ Coupling Resin (Thermo Fisher Scientific).

Target Details

Target:	NR1H2
---------	-------

Target Details

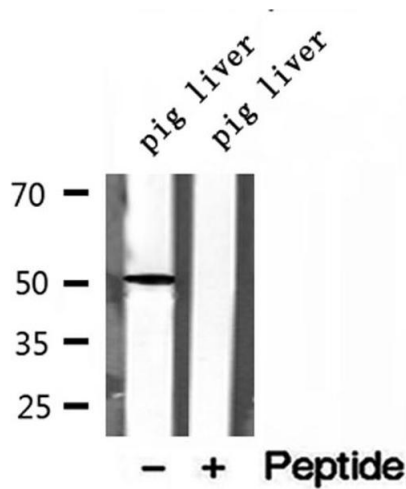
Alternative Name:	NR1H2 (NR1H2 Products)
Background:	<p>Description: Nuclear receptor that exhibits a ligand-dependent transcriptional activation activity (PubMed:25661920). Binds preferentially to double-stranded oligonucleotide direct repeats having the consensus half-site sequence 5'-AGGTCA-3' and 4-nt spacing (DR-4). Regulates cholesterol uptake through MYLIP-dependent ubiquitination of LDLR, VLDLR and LRP8, DLDLR and LRP8. Interplays functionally with RORA for the regulation of genes involved in liver metabolism (By similarity). Plays an anti-inflammatory role during the hepatic acute phase response by acting as a corepressor: inhibits the hepatic acute phase response by preventing dissociation of the N-Cor corepressor complex (PubMed:20159957).</p> <p>Gene: NR1H2</p>
Molecular Weight:	51 kDa
Gene ID:	7376
UniProt:	P55055
Pathways:	Nuclear Receptor Transcription Pathway , Retinoic Acid Receptor Signaling Pathway , Steroid Hormone Mediated Signaling Pathway , Nuclear Hormone Receptor Binding

Application Details

Application Notes:	WB 1:500-1:2000, IHC 1:50-1:200
Restrictions:	For Research Use only

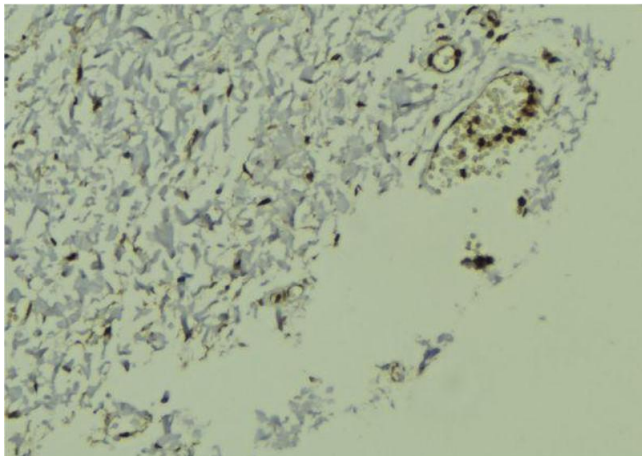
Handling

Format:	Liquid
Concentration:	1 mg/mL
Buffer:	Rabbit IgG in phosphate buffered saline , pH 7.4, 150 mM NaCl, 0.02 % sodium azide and 50 % glycerol.
Preservative:	Sodium azide
Precaution of Use:	This product contains Sodium azide: a POISONOUS AND HAZARDOUS SUBSTANCE which should be handled by trained staff only.
Storage:	-20 °C
Storage Comment:	Store at -20 °C. Stable for 12 months from date of receipt.



Western Blotting

Image 1. Western blot analysis of extracts of pig liver tissue, using NR1H2 antibody.



Immunohistochemistry

Image 2. ABIN6272970 at 1/100 staining Human breast cancer tissue by IHC-P. The sample was formaldehyde fixed and a heat mediated antigen retrieval step in citrate buffer was performed. The sample was then blocked and incubated with the antibody for 1.5 hours at 22°C. An HRP conjugated goat anti-rabbit antibody was used as the secondary.