

Datasheet for ABIN6263720  
**anti-NR2E1 antibody (Internal Region)**

## 2 Images

[Go to Product page](#)

## Overview

Quantity:	100 µL
Target:	NR2E1
Binding Specificity:	Internal Region
Reactivity:	Human, Mouse, Rat
Host:	Rabbit
Clonality:	Polyclonal
Conjugate:	This NR2E1 antibody is un-conjugated
Application:	Western Blotting (WB), ELISA, Immunohistochemistry (IHC)

## Product Details

Immunogen:	A synthesized peptide derived from human NR2E1, corresponding to a region within the internal amino acids.
Isotype:	IgG
Specificity:	NR2E1 Antibody detects endogenous levels of total NR2E1.
Predicted Reactivity:	Pig,Zebrafish,Bovine,Horse,Sheep,Rabbit,Dog,Chicken,Xenopus
Purification:	The antiserum was purified by peptide affinity chromatography using SulfoLink™ Coupling Resin (Thermo Fisher Scientific).

## Target Details

Target:	NR2E1
---------	-------

## Target Details

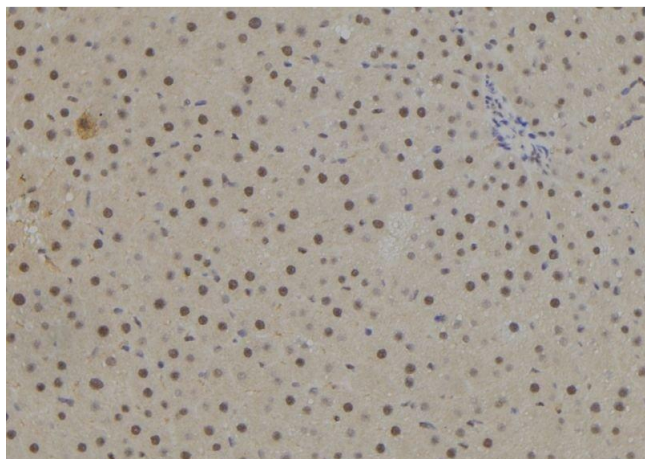
Alternative Name:	NR2E1 ( <a href="#">NR2E1 Products</a> )
Background:	<p>Description: Orphan receptor that binds DNA as a monomer to hormone response elements (HRE) containing an extended core motif half-site sequence 5'-AAGGTCA-3' in which the 5' flanking nucleotides participate in determining receptor specificity (By similarity). May be required to pattern anterior brain differentiation. Involved in the regulation of retinal development and essential for vision. During retinogenesis, regulates PTEN-Cyclin D expression via binding to the promoter region of PTEN and suppressing its activity (By similarity). May be involved in retinoic acid receptor (RAR) regulation in retinal cells.</p> <p>Gene: NR2E1</p>
Molecular Weight:	43 kDa
Gene ID:	7101
UniProt:	<a href="#">Q9Y466</a>
Pathways:	<a href="#">Nuclear Receptor Transcription Pathway</a> , <a href="#">Steroid Hormone Mediated Signaling Pathway</a> , <a href="#">Stem Cell Maintenance</a>

## Application Details

Application Notes:	WB 1:1000-3000, IHC 1:200, ELISA(peptide) 1:20000-1:40000
Restrictions:	For Research Use only

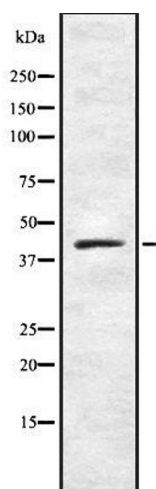
## Handling

Format:	Liquid
Concentration:	1 mg/mL
Buffer:	Rabbit IgG in phosphate buffered saline , pH 7.4, 150 mM NaCl, 0.02 % sodium azide and 50 % glycerol.
Preservative:	Sodium azide
Precaution of Use:	This product contains Sodium azide: a POISONOUS AND HAZARDOUS SUBSTANCE which should be handled by trained staff only.
Storage:	-20 °C
Storage Comment:	Store at -20 °C. Stable for 12 months from date of receipt.
Expiry Date:	12 months



#### Immunohistochemistry

**Image 1.** ABIN6278292 at 1/100 staining Rat liver tissue by IHC-P. The sample was formaldehyde fixed and a heat mediated antigen retrieval step in citrate buffer was performed. The sample was then blocked and incubated with the antibody for 1.5 hours at 22°C. An HRP conjugated goat anti-rabbit antibody was used as the secondary



#### Western Blotting

**Image 2.** Western blot analysis NR2E1 using HeLa whole cell lysates