



[Go to Product page](#)

Datasheet for ABIN6263779

anti-NUP88 antibody (Internal Region)

2 Images

Overview

Quantity:	100 µL
Target:	NUP88
Binding Specificity:	Internal Region
Reactivity:	Human, Mouse
Host:	Rabbit
Clonality:	Polyclonal
Conjugate:	This NUP88 antibody is un-conjugated
Application:	Western Blotting (WB), ELISA, Immunohistochemistry (IHC), Immunocytochemistry (ICC), Immunofluorescence (IF)

Product Details

Immunogen:	A synthesized peptide derived from human NUP88, corresponding to a region within the internal amino acids.
Isotype:	IgG
Specificity:	NUP88 Antibody detects endogenous levels of total NUP88.
Predicted Reactivity:	Pig,Bovine,Horse,Sheep,Rabbit,Dog,Chicken
Purification:	The antiserum was purified by peptide affinity chromatography using SulfoLink™ Coupling Resin (Thermo Fisher Scientific).

Target Details

Target:	NUP88
---------	-------

Target Details

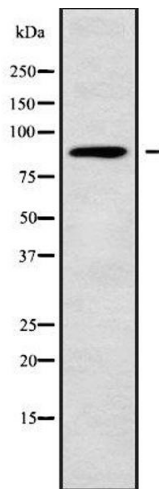
Alternative Name:	NUP88 (NUP88 Products)
Background:	Description: Essential component of nuclear pore complex. Gene: NUP88
Molecular Weight:	84 kDa
Gene ID:	4927
UniProt:	Q99567
Pathways:	SARS-CoV-2 Protein Interactome

Application Details

Application Notes:	WB 1:1000-3000, IHC 1:200, IF/ICC 1:100-1:500, ELISA(peptide) 1:20000-1:40000
Restrictions:	For Research Use only

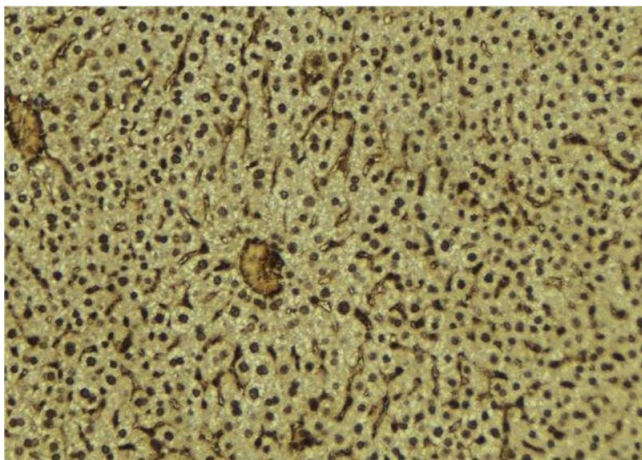
Handling

Format:	Liquid
Concentration:	1 mg/mL
Buffer:	Rabbit IgG in phosphate buffered saline , pH 7.4, 150 mM NaCl, 0.02 % sodium azide and 50 % glycerol.
Preservative:	Sodium azide
Precaution of Use:	This product contains Sodium azide: a POISONOUS AND HAZARDOUS SUBSTANCE which should be handled by trained staff only.
Storage:	-20 °C
Storage Comment:	Store at -20 °C. Stable for 12 months from date of receipt.
Expiry Date:	12 months



Western Blotting

Image 1. Western blot analysis NUP88 using COLO205 whole cell lysates



Immunohistochemistry

Image 2. ABIN6279623 at 1/100 staining Mouse liver tissue by IHC-P. The sample was formaldehyde fixed and a heat mediated antigen retrieval step in citrate buffer was performed. The sample was then blocked and incubated with the antibody for 1.5 hours at 22°C. An HRP conjugated goat anti-rabbit antibody was used as the secondary