

Datasheet for ABIN6263783  
**anti-NXF1 antibody (N-Term)**

## 4 Images

[Go to Product page](#)

## Overview

Quantity:	100 µL
Target:	NXF1
Binding Specificity:	N-Term
Reactivity:	Human, Mouse
Host:	Rabbit
Clonality:	Polyclonal
Conjugate:	This NXF1 antibody is un-conjugated
Application:	Western Blotting (WB), ELISA, Immunohistochemistry (IHC), Immunofluorescence (IF), Immunocytochemistry (ICC)

## Product Details

Immunogen:	A synthesized peptide derived from human NXF1, corresponding to a region within N-terminal amino acids.
Isotype:	IgG
Specificity:	NXF1 Antibody detects endogenous levels of total NXF1.
Predicted Reactivity:	Pig,Bovine,Sheep,Dog,Chicken,Xenopus
Purification:	The antiserum was purified by peptide affinity chromatography using SulfoLink™ Coupling Resin (Thermo Fisher Scientific).

## Target Details

Target:	NXF1
---------	------

## Target Details

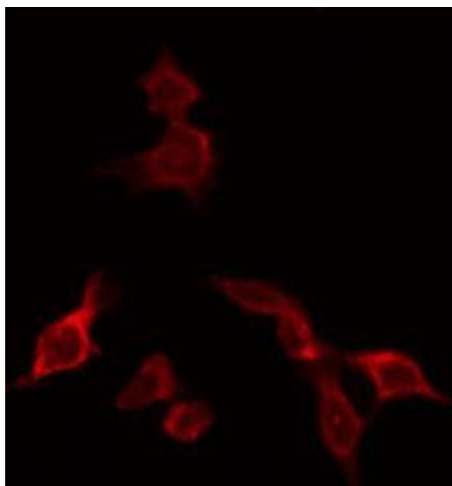
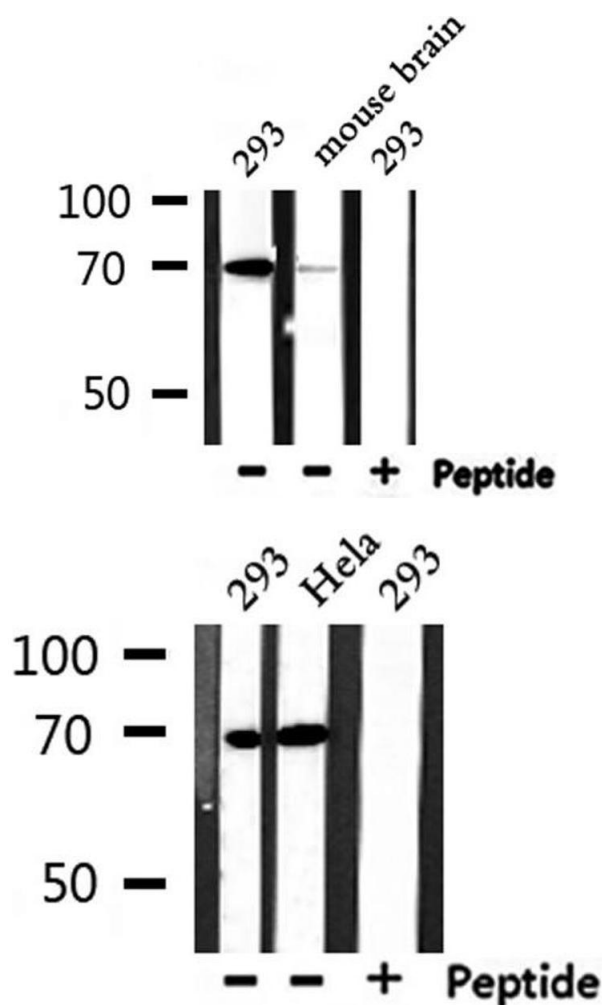
Alternative Name:	NXF1 ( <a href="#">NXF1 Products</a> )
Background:	<p>Description: Involved in the nuclear export of mRNA species bearing retroviral constitutive transport elements (CTE) and in the export of mRNA from the nucleus to the cytoplasm (TAP/NFX1 pathway) (PubMed:10924507). The NXF1-NXT1 heterodimer is involved in the export of HSP70 mRNA in conjunction with ALYREF/THOC4 and THOC5 components of the TREX complex. ALYREF/THOC4-bound mRNA is thought to be transferred to the NXF1-NXT1 heterodimer for export.</p> <p>Gene: NXF1</p>
Molecular Weight:	70kDa
Gene ID:	10482
UniProt:	<a href="#">Q9UBU9</a>

## Application Details

Application Notes:	WB: 1:500-1:3000, IF/ICC 1:100-1:500, IHC 1:50-1:200, ELISA(peptide) 1:20000-1:40000
Restrictions:	For Research Use only

## Handling

Format:	Liquid
Concentration:	1 mg/mL
Buffer:	Rabbit IgG in phosphate buffered saline , pH 7.4, 150 mM NaCl, 0.02 % sodium azide and 50 % glycerol.
Preservative:	Sodium azide
Precaution of Use:	This product contains Sodium azide: a POISONOUS AND HAZARDOUS SUBSTANCE which should be handled by trained staff only.
Storage:	-20 °C
Storage Comment:	Store at -20 °C. Stable for 12 months from date of receipt.
Expiry Date:	12 months



#### Western Blotting

**Image 1.** Western blot analysis of extracts from 293 and mouse brain, using NXF1 Antibody.

#### Western Blotting

**Image 2.** Western blot analysis of extracts from 293 and HeLa, using NXF1 Antibody.

#### Immunofluorescence (fixed cells)

**Image 3.** ABIN6266750 staining HeLa by IF/ICC. The sample were fixed with PFA and permeabilized in 0.1% Triton X-100, then blocked in 10% serum for 45 minutes at 25°C. The primary antibody was diluted at 1/200 and incubated with the sample for 1 hour at 37°C. An Alexa Fluor 594 conjugated goat anti-rabbit IgG (H+L) Ab, diluted at 1/600, was used as the secondary antibody.

Please check the [product details page](#) for more images. Overall 4 images are available for ABIN6263783.