



Datasheet for ABIN6263785

## anti-NUB1 antibody



[Go to Product page](#)

### 4 Images

#### Overview

Quantity:	100 µL
Target:	NUB1
Reactivity:	Human, Mouse, Monkey
Host:	Rabbit
Clonality:	Polyclonal
Conjugate:	This NUB1 antibody is un-conjugated
Application:	Western Blotting (WB), Immunohistochemistry (IHC), ELISA, Immunofluorescence (IF), Immunocytochemistry (ICC)

#### Product Details

Immunogen:	A synthesized peptide derived from human NYREN18
Isotype:	IgG
Specificity:	NYREN18 antibody detects endogenous levels of total NYREN18
Cross-Reactivity:	Human, Monkey, Mouse (Murine)
Purification:	The antiserum was purified by peptide affinity chromatography using SulfoLink™ Coupling Resin (Thermo Fisher Scientific).

#### Target Details

Target:	NUB1
Alternative Name:	NYREN18 ( <a href="#">NUB1 Products</a> )

## Target Details

---

Background:	Description: Specific down-regulator of the NEDD8 conjugation system. Recruits NEDD8, UBD, and their conjugates to the proteasome for degradation. Isoform 1 promotes the degradation of NEDD8 more efficiently than isoform 2. Gene: NUB1
Molecular Weight:	70kDa
Gene ID:	51667
UniProt:	<a href="#">Q9Y5A7</a>

## Application Details

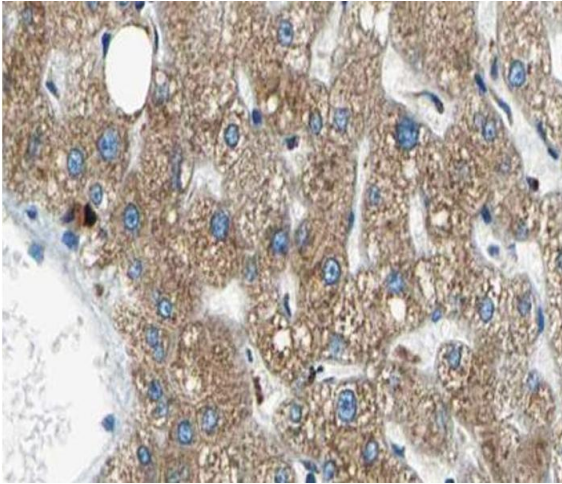
---

Application Notes:	WB: 1:500~1:3000 IHC: 1:50~1:200, IF/ICC 1:100-1:500
Restrictions:	For Research Use only

## Handling

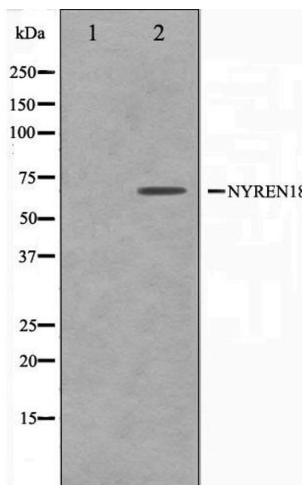
---

Format:	Liquid
Concentration:	1 mg/mL
Buffer:	Rabbit IgG in phosphate buffered saline , pH 7.4, 150 mM NaCl, 0.02 % sodium azide and 50 % glycerol.
Preservative:	Sodium azide
Precaution of Use:	This product contains Sodium azide: a POISONOUS AND HAZARDOUS SUBSTANCE which should be handled by trained staff only.
Storage:	-20 °C
Storage Comment:	Store at -20 °C.Stable for 12 months from date of receipt
Expiry Date:	12 months



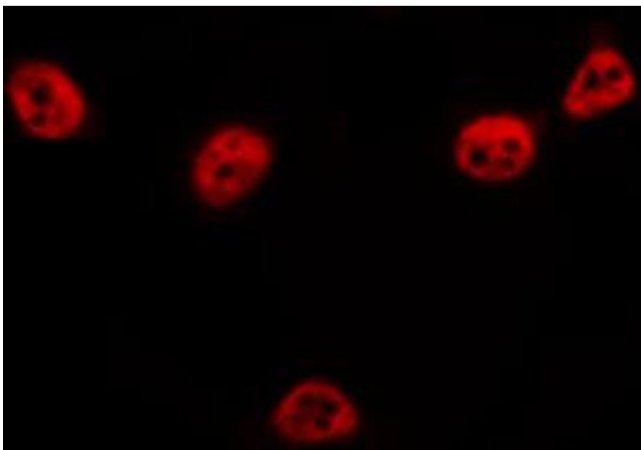
### Immunohistochemistry

**Image 1.** ABIN6266653 at 1/100 staining human liver tissue sections by IHC-P. The tissue was formaldehyde fixed and a heat mediated antigen retrieval step in citrate buffer was performed. The tissue was then blocked and incubated with the antibody for 1.5 hours at 22°C. An HRP conjugated goat anti-rabbit antibody was used as the secondary.



### Western Blotting

**Image 2.** Western blot analysis on COS7 cell lysate using NYREN18 Antibody, The lane on the left is treated with the antigen-specific peptide.



### Immunofluorescence (fixed cells)

**Image 3.** ABIN6266653 staining COS7 by IF/ICC. The sample were fixed with PFA and permeabilized in 0.1% Triton X-100, then blocked in 10% serum for 45 minutes at 25°C. The primary antibody was diluted at 1/200 and incubated with the sample for 1 hour at 37°C. An Alexa Fluor 594 conjugated goat anti-rabbit IgG (H+L) Ab, diluted at 1/600, was used as the secondary antibody.

Please check the [product details page](#) for more images. Overall 4 images are available for ABIN6263785.