



[Go to Product page](#)

Datasheet for ABIN6263803

## anti-alpha KGDHC antibody (N-Term)

### 2 Images

#### Overview

Quantity:	100 µL
Target:	alpha KGDHC (alphaKGDHC)
Binding Specificity:	N-Term
Reactivity:	Human, Rat, Mouse
Host:	Rabbit
Clonality:	Polyclonal
Conjugate:	This alpha KGDHC antibody is un-conjugated
Application:	Western Blotting (WB), Immunohistochemistry (IHC), Immunofluorescence (IF), Immunocytochemistry (ICC)

#### Product Details

Immunogen:	A synthesized peptide derived from human OGDH, corresponding to a region within N-terminal amino acids.
Isotype:	IgG
Specificity:	OGDH Antibody detects endogenous levels of total OGDH.
Predicted Reactivity:	Pig,Bovine,Horse,Sheep,Rabbit,Chicken,Xenopus
Purification:	The antiserum was purified by peptide affinity chromatography using SulfoLink™ Coupling Resin (Thermo Fisher Scientific).

#### Target Details

Target:	alpha KGDHC (alphaKGDHC)
---------	--------------------------

## Target Details

---

Alternative Name:	OGDH ( <a href="#">alphaKGDHC Products</a> )
Background:	<p>Description: 2-oxoglutarate dehydrogenase (E1) component of the 2-oxoglutarate dehydrogenase complex, which mediates the decarboxylation of alpha-ketoglutarate (PubMed:24495017). The 2-oxoglutarate dehydrogenase complex catalyzes the overall conversion of 2-oxoglutarate to succinyl-CoA and CO<sub>2</sub> (PubMed:24495017). The 2-oxoglutarate dehydrogenase complex is mainly active in the mitochondrion (PubMed:29211711). A fraction of the 2-oxoglutarate dehydrogenase complex also localizes in the nucleus and is required for lysine succinylation of histones: associates with KAT2A on chromatin and provides succinyl-CoA to histone succinyltransferase KAT2A (PubMed:29211711).</p> <p>Gene: OGDH</p>
Molecular Weight:	116 kDa
Gene ID:	4967
UniProt:	<a href="#">Q02218</a>

## Application Details

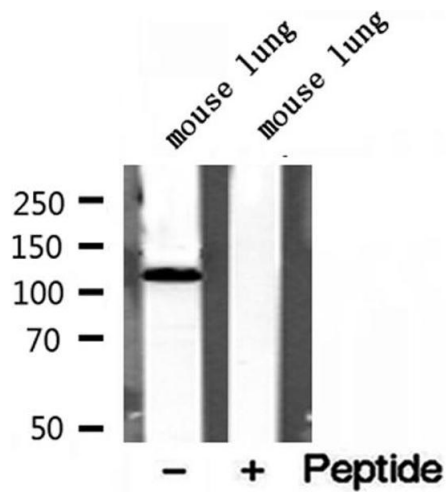
---

Application Notes:	WB 1:500-1:2000, IHC 1:50-1:200, IF/ICC 1:100-1:500
Restrictions:	For Research Use only

## Handling

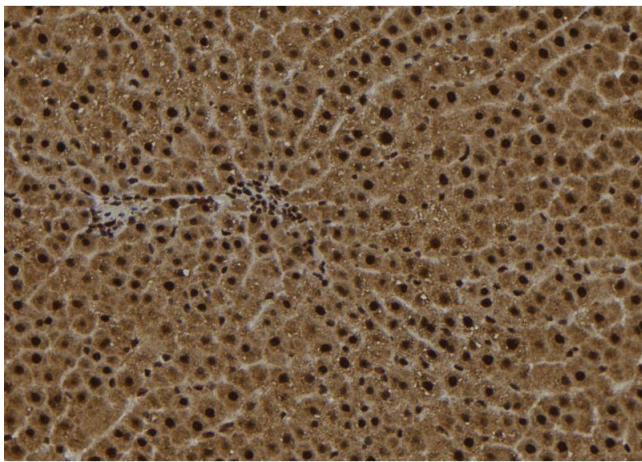
---

Format:	Liquid
Concentration:	1 mg/mL
Buffer:	Rabbit IgG in phosphate buffered saline , pH 7.4, 150 mM NaCl, 0.02 % sodium azide and 50 % glycerol.
Preservative:	Sodium azide
Precaution of Use:	This product contains Sodium azide: a POISONOUS AND HAZARDOUS SUBSTANCE which should be handled by trained staff only.
Storage:	-20 °C
Storage Comment:	Store at -20 °C. Stable for 12 months from date of receipt.
Expiry Date:	12 months



### Western Blotting

**Image 1.** Western blot analysis of extracts of mouse lung tissue, using OGDH antibody.



### Immunohistochemistry

**Image 2.** ABIN6272971 at 1/100 staining Rat liver tissue by IHC-P. The sample was formaldehyde fixed and a heat mediated antigen retrieval step in citrate buffer was performed. The sample was then blocked and incubated with the antibody for 1.5 hours at 22°C. An HRP conjugated goat anti-rabbit antibody was used as the secondary.