



Datasheet for ABIN6263841  
**anti-OR1C1 antibody (C-Term)**



[Go to Product page](#)

1 Image

Overview

Quantity:	100 µL
Target:	OR1C1
Binding Specificity:	C-Term
Reactivity:	Human
Host:	Rabbit
Clonality:	Polyclonal
Conjugate:	This OR1C1 antibody is un-conjugated
Application:	Western Blotting (WB), ELISA

Product Details

Immunogen:	A synthesized peptide derived from human OR1C1, corresponding to a region within C-terminal amino acids.
Isotype:	IgG
Specificity:	OR1C1 Antibody detects endogenous levels of total OR1C1.
Purification:	The antiserum was purified by peptide affinity chromatography using SulfoLink™ Coupling Resin (Thermo Fisher Scientific).

Target Details

Target:	OR1C1
Alternative Name:	OR1C1 ( <a href="#">OR1C1 Products</a> )

## Target Details

---

Background: Description: Odorant receptor.  
Gene: OR1C1

---

Molecular Weight: 35 kDa

---

Gene ID: 26188

---

UniProt: [Q15619](#)

---

## Application Details

---

Application Notes: WB 1:1000-3000, ELISA(peptide) 1:20000-1:40000

---

Restrictions: For Research Use only

---

## Handling

---

Format: Liquid

---

Concentration: 1 mg/mL

---

Buffer: Rabbit IgG in phosphate buffered saline , pH 7.4, 150 mM NaCl, 0.02 % sodium azide and 50 % glycerol.

---

Preservative: Sodium azide

---

Precaution of Use: This product contains Sodium azide: a POISONOUS AND HAZARDOUS SUBSTANCE which should be handled by trained staff only.

---

Storage: -20 °C

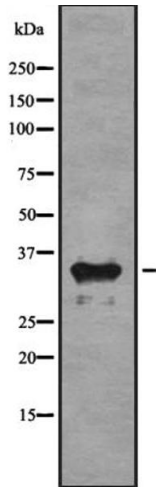
---

Storage Comment: Store at -20 °C. Stable for 12 months from date of receipt.

---

Expiry Date: 12 months

---



### Western Blotting

**Image 1.** Western blot analysis OR1C1 using COLO205 whole cell lysates