

Datasheet for ABIN6263844  
**anti-OR1E2 antibody (C-Term)**[Go to Product page](#)

## 2 Images

## Overview

Quantity:	100 µL
Target:	OR1E2
Binding Specificity:	C-Term
Reactivity:	Human
Host:	Rabbit
Clonality:	Polyclonal
Conjugate:	This OR1E2 antibody is un-conjugated
Application:	Western Blotting (WB), ELISA, Immunocytochemistry (ICC), Immunofluorescence (IF), Immunohistochemistry (IHC)

## Product Details

Immunogen:	A synthesized peptide derived from human OR1E2, corresponding to a region within C-terminal amino acids.
Isotype:	IgG
Specificity:	OR1E2 Antibody detects endogenous levels of total OR1E2.
Purification:	The antiserum was purified by peptide affinity chromatography using SulfoLink™ Coupling Resin (Thermo Fisher Scientific).

## Target Details

Target:	OR1E2
Alternative Name:	OR1E2 ( <a href="#">OR1E2 Products</a> )

## Target Details

Background:	Description: Odorant receptor. Gene: OR1E2
-------------	-----------------------------------------------

Molecular Weight:	36 kDa
-------------------	--------

Gene ID:	8388
----------	------

UniProt:	<a href="#">P47887</a>
----------	------------------------

## Application Details

Application Notes:	WB 1:1000-3000, IHC 1:200, ELISA(peptide) 1:20000-1:40000, IF/ICC 1:100-1:500
--------------------	-------------------------------------------------------------------------------

Restrictions:	For Research Use only
---------------	-----------------------

## Handling

Format:	Liquid
---------	--------

Concentration:	1 mg/mL
----------------	---------

Buffer:	Rabbit IgG in phosphate buffered saline , pH 7.4, 150 mM NaCl, 0.02 % sodium azide and 50 % glycerol.
---------	-------------------------------------------------------------------------------------------------------

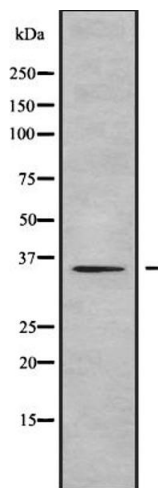
Preservative:	Sodium azide
---------------	--------------

Precaution of Use:	This product contains Sodium azide: a POISONOUS AND HAZARDOUS SUBSTANCE which should be handled by trained staff only.
--------------------	------------------------------------------------------------------------------------------------------------------------

Storage:	-20 °C
----------	--------

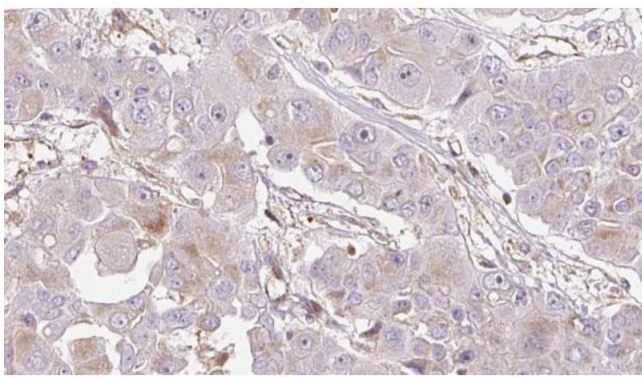
Storage Comment:	Store at -20 °C. Stable for 12 months from date of receipt.
------------------	-------------------------------------------------------------

Expiry Date:	12 months
--------------	-----------



### Western Blotting

**Image 1.** Western blot analysis OR1E2 using 293 whole cell lysates



### Immunohistochemistry

**Image 2.** ABIN6272715 at 1/100 staining Human liver cancer tissue by IHC-P. The sample was formaldehyde fixed and a heat mediated antigen retrieval step in citrate buffer was performed. The sample was then blocked and incubated with the antibody for 1.5 hours at 22°C. An HRP conjugated goat anti-rabbit antibody was used as the secondary.