

## Datasheet for ABIN6263851 anti-OR2B6 antibody (Internal Region)

### 2 Images

[Go to Product page](#)

#### Overview

Quantity:	100 µL
Target:	OR2B6
Binding Specificity:	Internal Region
Reactivity:	Human
Host:	Rabbit
Clonality:	Polyclonal
Conjugate:	This OR2B6 antibody is un-conjugated
Application:	Western Blotting (WB), ELISA, Immunohistochemistry (IHC)

#### Product Details

Immunogen:	A synthesized peptide derived from human OR2B6, corresponding to a region within the internal amino acids.
Isotype:	IgG
Specificity:	OR2B6 Antibody detects endogenous levels of total OR2B6.
Predicted Reactivity:	Pig,Horse
Purification:	The antiserum was purified by peptide affinity chromatography using SulfoLink™ Coupling Resin (Thermo Fisher Scientific).

#### Target Details

Target:	OR2B6
---------	-------

## Target Details

Alternative Name: OR2B6 ([OR2B6 Products](#))

Background: Description: Odorant receptor.  
Gene: OR2B6

Molecular Weight: 35 kDa

Gene ID: 26212

UniProt: [P58173](#)

## Application Details

Application Notes: WB 1:1000-3000, IHC 1:200, ELISA(peptide) 1:20000-1:40000

Restrictions: For Research Use only

## Handling

Format: Liquid

Concentration: 1 mg/mL

Buffer: Rabbit IgG in phosphate buffered saline , pH 7.4, 150 mM NaCl, 0.02 % sodium azide and 50 % glycerol.

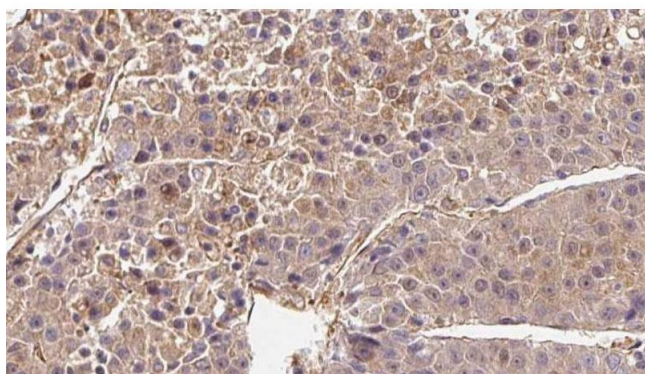
Preservative: Sodium azide

Precaution of Use: This product contains Sodium azide: a POISONOUS AND HAZARDOUS SUBSTANCE which should be handled by trained staff only.

Storage: -20 °C

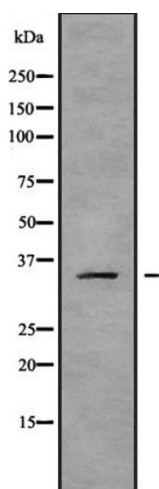
Storage Comment: Store at -20 °C. Stable for 12 months from date of receipt.

Expiry Date: 12 months



### Immunohistochemistry

**Image 1.** ABIN6272720 at 1/100 staining Human liver cancer tissue by IHC-P. The sample was formaldehyde fixed and a heat mediated antigen retrieval step in citrate buffer was performed. The sample was then blocked and incubated with the antibody for 1.5 hours at 22°C. An HRP conjugated goat anti-rabbit antibody was used as the secondary.



### Western Blotting

**Image 2.** Western blot analysis OR2B6 using K562 whole cell lysates