



[Go to Product page](#)

Datasheet for ABIN6263854

anti-OR2L2 antibody

2 Images

Overview

Quantity:	100 µL
Target:	OR2L2
Reactivity:	Human, Rat
Host:	Rabbit
Clonality:	Polyclonal
Conjugate:	This OR2L2 antibody is un-conjugated
Application:	Western Blotting (WB), ELISA

Product Details

Immunogen:	A synthesized peptide derived from human OR2L2
Isotype:	IgG
Specificity:	OR2L2 Antibody detects endogenous levels of total OR2L2
Cross-Reactivity:	Human, Rat (Rattus)
Purification:	The antiserum was purified by peptide affinity chromatography using SulfoLink™ Coupling Resin (Thermo Fisher Scientific).

Target Details

Target:	OR2L2
Alternative Name:	OR2L2 (OR2L2 Products)
Background:	Description: Odorant receptor.

Target Details

Gene: OR2L2

Molecular Weight: 35 kDa

Gene ID: 26246

UniProt: [Q8NH16](#)

Application Details

Application Notes: WB 1:1000-3000

Restrictions: For Research Use only

Handling

Format: Liquid

Concentration: 1 mg/mL

Buffer: Rabbit IgG in phosphate buffered saline , pH 7.4, 150 mM NaCl, 0.02 % sodium azide and 50 % glycerol.

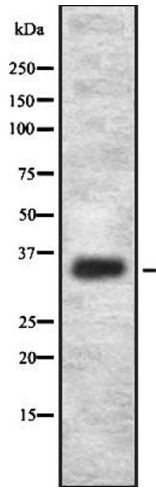
Preservative: Sodium azide

Precaution of Use: This product contains Sodium azide: a POISONOUS AND HAZARDOUS SUBSTANCE which should be handled by trained staff only.

Storage: -20 °C

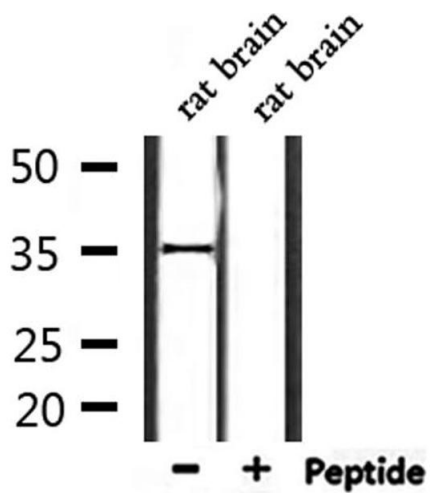
Storage Comment: Store at -20 °C.Stable for 12 months from date of receipt

Expiry Date: 12 months



Western Blotting

Image 1. Western blot analysis OR2L2 using HepG2 whole cell lysates



Western Blotting

Image 2. Western blot analysis of extracts from rat brain, using OR2L2 Antibody.