



Datasheet for ABIN6263882
anti-OR52R1 antibody



[Go to Product page](#)

3 Images

Overview

Quantity:	100 µL
Target:	OR52R1
Reactivity:	Human, Mouse, Rat
Host:	Rabbit
Clonality:	Polyclonal
Conjugate:	This OR52R1 antibody is un-conjugated
Application:	Western Blotting (WB), ELISA, Immunohistochemistry (IHC)

Product Details

Immunogen:	A synthesized peptide derived from human OR52R1
Isotype:	IgG
Specificity:	OR52R1 Antibody detects endogenous levels of total OR52R1
Cross-Reactivity:	Human, Mouse (Murine), Rat (Rattus)
Purification:	The antiserum was purified by peptide affinity chromatography using SulfoLink™ Coupling Resin (Thermo Fisher Scientific).

Target Details

Target:	OR52R1
Alternative Name:	OR52R1 (OR52R1 Products)
Background:	Description: Odorant receptor.

Target Details

Gene: OR52R1

Molecular Weight: 35 kDa

Gene ID: 119695

UniProt: [Q8NGF1](#)

Application Details

Application Notes: WB 1:1000-3000 IHC 1:200

Restrictions: For Research Use only

Handling

Format: Liquid

Concentration: 1 mg/mL

Buffer: Rabbit IgG in phosphate buffered saline , pH 7.4, 150 mM NaCl, 0.02 % sodium azide and 50 % glycerol.

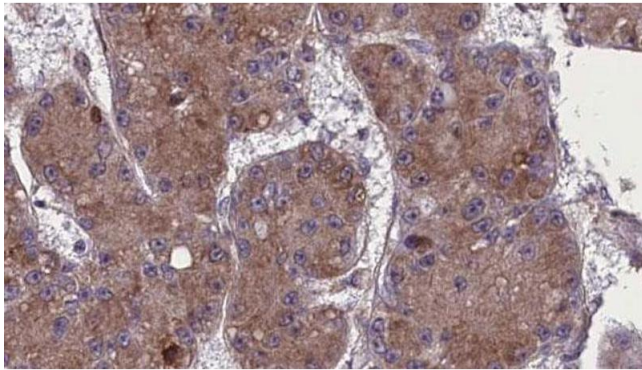
Preservative: Sodium azide

Precaution of Use: This product contains Sodium azide: a POISONOUS AND HAZARDOUS SUBSTANCE which should be handled by trained staff only.

Storage: -20 °C

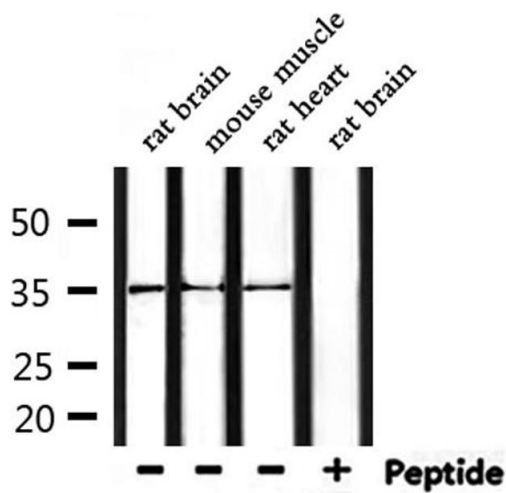
Storage Comment: Store at -20 °C.Stable for 12 months from date of receipt

Expiry Date: 12 months



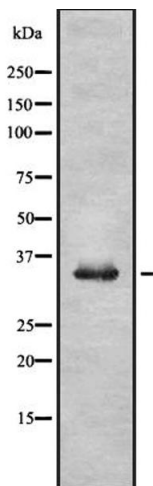
Immunohistochemistry

Image 1. ABIN6272765 at 1/100 staining Human liver cancer tissue by IHC-P. The sample was formaldehyde fixed and a heat mediated antigen retrieval step in citrate buffer was performed. The sample was then blocked and incubated with the antibody for 1.5 hours at 22°C. An HRP conjugated goat anti-rabbit antibody was used as the secondary.



Western Blotting

Image 2. Western blot analysis of extracts from mouse muscle and rat brain and rat heart, using OR52R1 Antibody.



Western Blotting

Image 3. Western blot analysis OR52R1 using K562 whole cell lysates