

Datasheet for ABIN6263917  
**anti-OTUB2 antibody (Internal Region)**[Go to Product page](#)

## 4 Images

## Overview

Quantity:	100 µL
Target:	OTUB2
Binding Specificity:	Internal Region
Reactivity:	Human, Mouse
Host:	Rabbit
Clonality:	Polyclonal
Conjugate:	This OTUB2 antibody is un-conjugated
Application:	Western Blotting (WB), ELISA, Immunohistochemistry (IHC), Immunofluorescence (IF), Immunocytochemistry (ICC)

## Product Details

Immunogen:	A synthesized peptide derived from human OTUB2, corresponding to a region within the internal amino acids.
Isotype:	IgG
Specificity:	OTUB2 Antibody detects endogenous levels of total OTUB2.
Predicted Reactivity:	Pig,Bovine,Horse,Sheep,Rabbit,Dog
Purification:	The antiserum was purified by peptide affinity chromatography using SulfoLink™ Coupling Resin (Thermo Fisher Scientific).

## Target Details

Target:	OTUB2
---------	-------

## Target Details

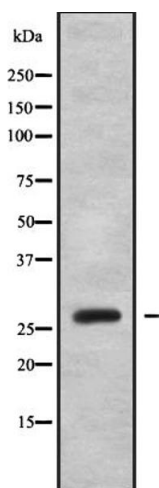
Alternative Name:	OTUB2 ( <a href="#">OTUB2 Products</a> )
Background:	<p>Description: Hydrolase that can remove conjugated ubiquitin from proteins in vitro and may therefore play an important regulatory role at the level of protein turnover by preventing degradation. Mediates deubiquitination of 'Lys-11', 'Lys-48' and 'Lys-63'-linked polyubiquitin chains, with a preference for 'Lys-63'-linked polyubiquitin chains.</p> <p>Gene: OTUB2</p>
Molecular Weight:	27kDa
Gene ID:	78990
UniProt:	<a href="#">Q96DC9</a>

## Application Details

Application Notes:	WB 1:1000, IHC 1:200, IF/ICC 1:100-1:500, ELISA(peptide) 1:20000-1:40000
Restrictions:	For Research Use only

## Handling

Format:	Liquid
Concentration:	1 mg/mL
Buffer:	Rabbit IgG in phosphate buffered saline , pH 7.4, 150 mM NaCl, 0.02 % sodium azide and 50 % glycerol.
Preservative:	Sodium azide
Precaution of Use:	This product contains Sodium azide: a POISONOUS AND HAZARDOUS SUBSTANCE which should be handled by trained staff only.
Storage:	-20 °C
Storage Comment:	Store at -20 °C. Stable for 12 months from date of receipt.
Expiry Date:	12 months



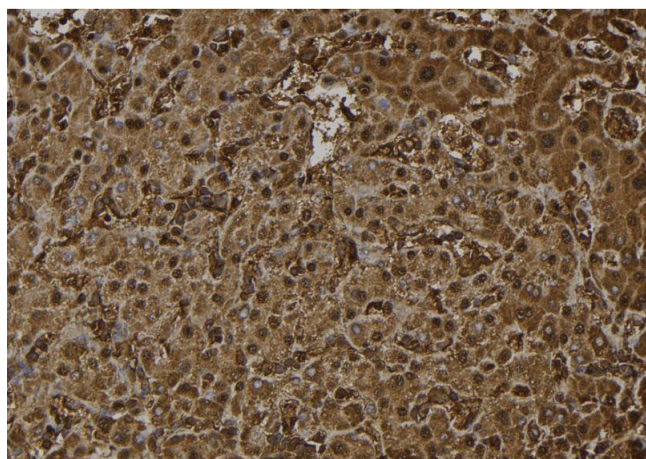
### Western Blotting

**Image 1.** Western blot analysis OTUB2 using HepG2 whole cell lysates



### Immunofluorescence (fixed cells)

**Image 2.** ABIN6272379 staining COLO205 by IF/ICC. The sample were fixed with PFA and permeabilized in 0.1% Triton X-100, then blocked in 10% serum for 45 minutes at 25°C. The primary antibody was diluted at 1/200 and incubated with the sample for 1 hour at 37°C. An Alexa Fluor 594 conjugated goat anti-rabbit IgG (H+L) Ab, diluted at 1/600, was used as the secondary antibody.



### Immunohistochemistry

**Image 3.** ABIN6272379 at 1/100 staining Human liver tissue by IHC-P. The sample was formaldehyde fixed and a heat mediated antigen retrieval step in citrate buffer was performed. The sample was then blocked and incubated with the antibody for 1.5 hours at 22°C. An HRP conjugated goat anti-rabbit antibody was used as the secondary.

Please check the [product details page](#) for more images. Overall 4 images are available for ABIN6263917.