



[Go to Product page](#)

Datasheet for ABIN6263924

anti-OXCT1 antibody (Internal Region)

3 Images

Overview

Quantity:	100 µL
Target:	OXCT1
Binding Specificity:	Internal Region
Reactivity:	Human, Mouse, Rat
Host:	Rabbit
Clonality:	Polyclonal
Conjugate:	This OXCT1 antibody is un-conjugated
Application:	Western Blotting (WB), Immunohistochemistry (IHC), Immunofluorescence (IF), Immunocytochemistry (ICC)

Product Details

Immunogen:	A synthesized peptide derived from human OXCT1, corresponding to a region within the internal amino acids.
Isotype:	IgG
Specificity:	OXCT1 Antibody detects endogenous levels of total OXCT1.
Predicted Reactivity:	Pig,Bovine,Horse,Sheep,Rabbit,Dog,Xenopus
Purification:	The antiserum was purified by peptide affinity chromatography using SulfoLink™ Coupling Resin (Thermo Fisher Scientific).

Target Details

Target:	OXCT1
---------	-------

Target Details

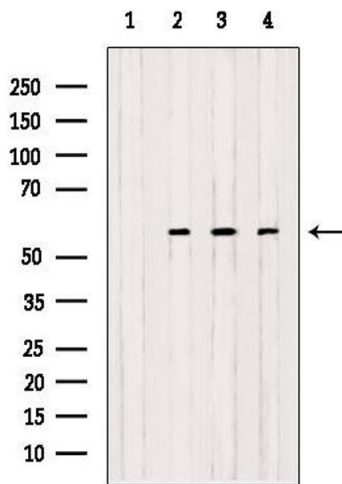
Alternative Name:	OXCT1 (OXCT1 Products)
Background:	Description: Key enzyme for ketone body catabolism. Transfers the CoA moiety from succinate to acetoacetate. Formation of the enzyme-CoA intermediate proceeds via an unstable anhydride species formed between the carboxylate groups of the enzyme and substrate. Gene: OXCT1
Molecular Weight:	56 kDa
Gene ID:	5019
UniProt:	P55809
Pathways:	Positive Regulation of Peptide Hormone Secretion, Carbohydrate Homeostasis

Application Details

Application Notes:	WB 1:500-1:2000, IHC 1:50-1:200, IF/ICC 1:100-1:500
Restrictions:	For Research Use only

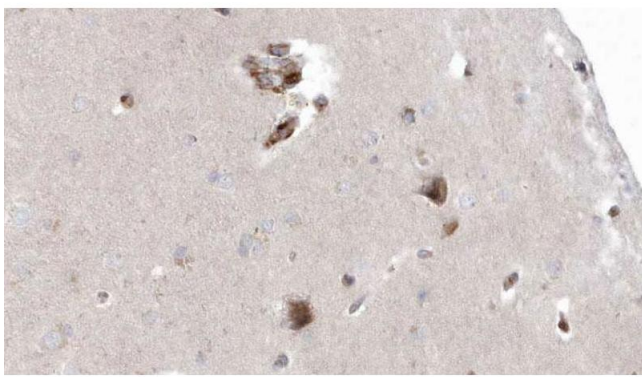
Handling

Format:	Liquid
Concentration:	1 mg/mL
Buffer:	Rabbit IgG in phosphate buffered saline , pH 7.4, 150 mM NaCl, 0.02 % sodium azide and 50 % glycerol.
Preservative:	Sodium azide
Precaution of Use:	This product contains Sodium azide: a POISONOUS AND HAZARDOUS SUBSTANCE which should be handled by trained staff only.
Storage:	-20 °C
Storage Comment:	Store at -20 °C. Stable for 12 months from date of receipt.
Expiry Date:	12 months



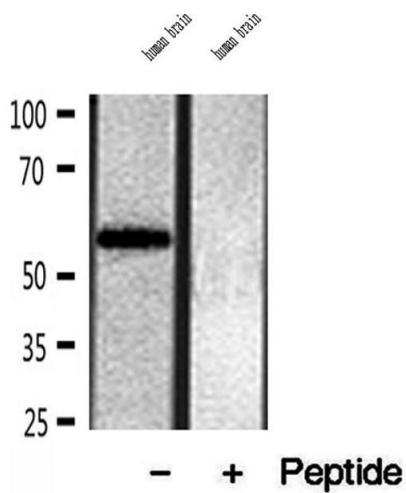
Western Blotting

Image 1. Western blot analysis of extracts from various samples, using OXCT1 antibody. Lane 1: rat brain treated with blocking peptide. Lane 2: rat brain; Lane 3: 293; Lane 4: mouse spleen; Lane 5: hela;



Immunohistochemistry

Image 2. ABIN6272926 at 1/100 staining Human brain cancer tissue by IHC-P. The sample was formaldehyde fixed and a heat mediated antigen retrieval step in citrate buffer was performed. The sample was then blocked and incubated with the antibody for 1.5 hours at 22°C. An HRP conjugated goat anti-rabbit antibody was used as the secondary.



Western Blotting

Image 3. Western blot analysis of extracts of human brain tissue, using OXCT1 antibody.