

Datasheet for ABIN6263936

anti-CDKN2B antibody (Internal Region)

3 Images

1 Publication

[Go to Product page](#)

Overview

Quantity:	100 µL
Target:	CDKN2B
Binding Specificity:	Internal Region
Reactivity:	Human, Mouse, Rat
Host:	Rabbit
Clonality:	Polyclonal
Conjugate:	This CDKN2B antibody is un-conjugated
Application:	Western Blotting (WB), ELISA, Immunohistochemistry (IHC), Immunofluorescence (IF), Immunocytochemistry (ICC)

Product Details

Immunogen:	A synthesized peptide derived from human p15 INK4b, corresponding to a region within the internal amino acids.
Isotype:	IgG
Specificity:	P15 INK4b Antibody detects endogenous levels of total p15 INK4b.
Predicted Reactivity:	Bovine,Horse,Rabbit,Dog
Purification:	The antiserum was purified by peptide affinity chromatography using SulfoLink™ Coupling Resin (Thermo Fisher Scientific).

Target Details

Target:	CDKN2B
---------	--------

Target Details

Alternative Name:	CDKN2B (CDKN2B Products)
Background:	Description: Interacts strongly with CDK4 and CDK6. Potent inhibitor. Potential effector of TGF-beta induced cell cycle arrest. Gene: CDKN2B
Molecular Weight:	14kDa
Gene ID:	1030
UniProt:	P42772
Pathways:	Cell Division Cycle , Mitotic G1-G1/S Phases

Application Details

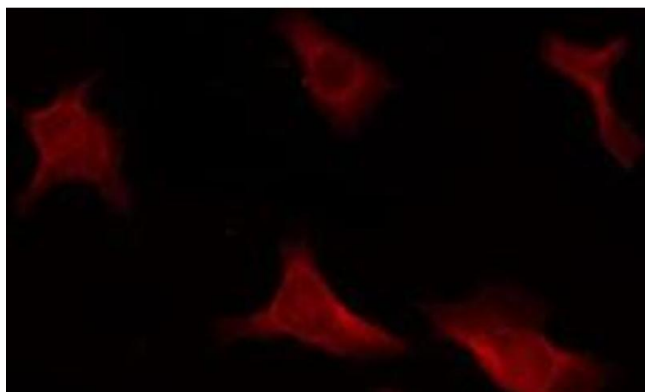
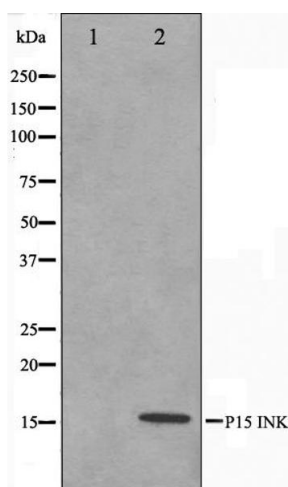
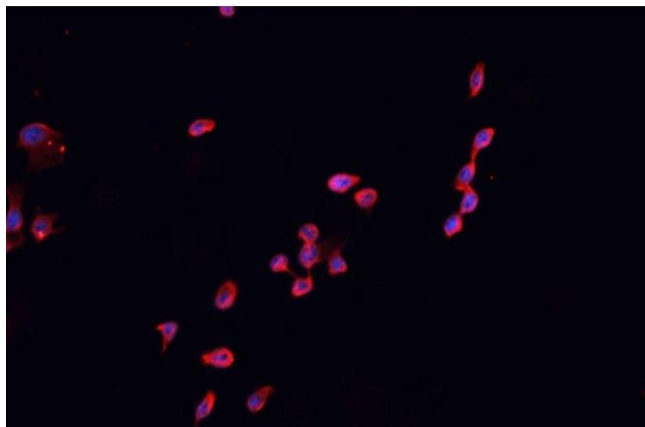
Application Notes:	WB: 1:500-1:3000, IHC: 1:50-1:200, IF/ICC: 1:100-1:500, ELISA(peptide) 1:20000-1:40000
Restrictions:	For Research Use only

Handling

Format:	Liquid
Concentration:	1 mg/mL
Buffer:	Rabbit IgG in phosphate buffered saline , pH 7.4, 150 mM NaCl, 0.02 % sodium azide and 50 % glycerol.
Preservative:	Sodium azide
Precaution of Use:	This product contains Sodium azide: a POISONOUS AND HAZARDOUS SUBSTANCE which should be handled by trained staff only.
Storage:	-20 °C
Storage Comment:	Store at -20 °C. Stable for 12 months from date of receipt.
Expiry Date:	12 months

Publications

Product cited in:	Chen, Zhang, Mao, Zhou, Yu, Yin, Wu, Mou, Zhu: "ANRIL inhibits p15(INK4b) through the TGFβ1 signaling pathway in human esophageal squamous cell carcinoma." in: Cellular immunology , Vol. 289, Issue 1-2, pp. 91-6, (2014) (PubMed).
-------------------	--



Immunofluorescence (fixed cells)

Image 1. ABIN6266609 staining HEK 293 cells by IF/ICC. The sample were fixed with PFA and permeabilized in 0.1% Triton X-100, then blocked in 10% serum for 45 minutes at 25°C. The primary antibody was diluted at 1/200 and incubated with the sample for 1 hour at 37°C. An Alexa Fluor 594 conjugated goat anti-rabbit IgG (H+L) antibody (Cat.# S0006), diluted at 1/600, was used as secondary antibody

Western Blotting

Image 2. Western blot analysis on HeLa cell lysate using p15 INK Antibody. The lane on the left is treated with the antigen-specific peptide.

Immunofluorescence (fixed cells)

Image 3. ABIN6266609 staining HeLa by IF/ICC. The sample were fixed with PFA and permeabilized in 0.1% Triton X-100, then blocked in 10% serum for 45 minutes at 25°C. The primary antibody was diluted at 1/200 and incubated with the sample for 1 hour at 37°C. An Alexa Fluor 594 conjugated goat anti-rabbit IgG (H+L) Ab, diluted at 1/600, was used as the secondary antibody