



[Go to Product page](#)

Datasheet for ABIN6264014

anti-Phenylalanine Hydroxylase antibody (N-Term)

2 Images

Overview

Quantity:	100 µL
Target:	Phenylalanine Hydroxylase
Binding Specificity:	N-Term
Reactivity:	Human, Mouse, Rat
Host:	Rabbit
Clonality:	Polyclonal
Conjugate:	This Phenylalanine Hydroxylase antibody is un-conjugated
Application:	Western Blotting (WB), Immunohistochemistry (IHC), ELISA, Immunocytochemistry (ICC), Immunofluorescence (IF)

Product Details

Immunogen:	A synthesized peptide derived from human PAH, corresponding to a region within N-terminal amino acids.
Isotype:	IgG
Specificity:	PAH Antibody detects endogenous levels of total PAH.
Predicted Reactivity:	Pig,Bovine,Horse,Sheep,Rabbit,Dog,Chicken,Xenopus
Purification:	The antiserum was purified by peptide affinity chromatography using SulfoLink™ Coupling Resin (Thermo Fisher Scientific).

Target Details

Target:	Phenylalanine Hydroxylase
---------	---------------------------

Target Details

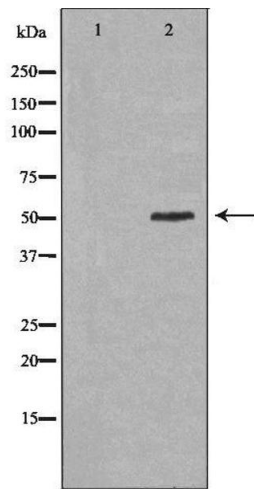
Alternative Name:	PAH (Phenylalanine Hydroxylase Products)
Background:	Description: L-phenylalanine + tetrahydrobiopterin + O ₂ = L-tyrosine + 4a-hydroxytetrahydrobiopterin. Gene: PAH
Molecular Weight:	52kDa
Gene ID:	5053
UniProt:	P00439

Application Details

Application Notes:	WB 1:500-1:2000, IHC 1:50-1:200, IF/ICC 1:100-1:500, ELISA(peptide) 1:20000-1:40000
Restrictions:	For Research Use only

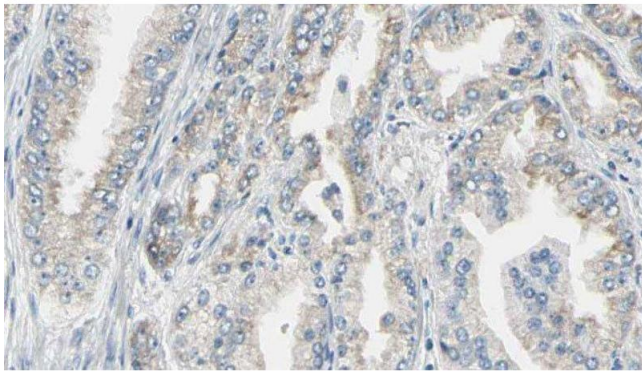
Handling

Format:	Liquid
Concentration:	1 mg/mL
Buffer:	Rabbit IgG in phosphate buffered saline , pH 7.4, 150 mM NaCl, 0.02 % sodium azide and 50 % glycerol.
Preservative:	Sodium azide
Precaution of Use:	This product contains Sodium azide: a POISONOUS AND HAZARDOUS SUBSTANCE which should be handled by trained staff only.
Storage:	-20 °C
Storage Comment:	Store at -20 °C. Stable for 12 months from date of receipt.
Expiry Date:	12 months



Western Blotting

Image 1. Western blot analysis of Mouse liver tissue lysates, using PAH Antibody. The lane on the left is treated with the antigen-specific peptide.



Immunohistochemistry

Image 2. ABIN6276720 at 1/100 staining Human prostate tissue by IHC-P. The sample was formaldehyde fixed and a heat mediated antigen retrieval step in citrate buffer was performed. The sample was then blocked and incubated with the antibody for 1.5 hours at 22°C. An HRP conjugated goat anti-rabbit antibody was used as the secondary