

Datasheet for ABIN6264016
anti-SERPINB2 antibody (Internal Region)[Go to Product page](#)

2 Images

Overview

| | |
|----------------------|--|
| Quantity: | 100 µL |
| Target: | SERPINB2 |
| Binding Specificity: | Internal Region |
| Reactivity: | Human, Rat, Mouse |
| Host: | Rabbit |
| Clonality: | Polyclonal |
| Conjugate: | This SERPINB2 antibody is un-conjugated |
| Application: | Western Blotting (WB), Immunohistochemistry (IHC), ELISA, Immunocytochemistry (ICC), Immunofluorescence (IF) |

Product Details

| | |
|-----------------------|---|
| Immunogen: | A synthesized peptide derived from human PAI 2, corresponding to a region within the internal amino acids. |
| Isotype: | IgG |
| Specificity: | PAI 2 Antibody detects endogenous levels of total PAI 2. |
| Predicted Reactivity: | Horse,Rabbit,Dog |
| Purification: | The antiserum was purified by peptide affinity chromatography using SulfoLink™ Coupling Resin (Thermo Fisher Scientific). |

Target Details

| | |
|---------|----------|
| Target: | SERPINB2 |
|---------|----------|

Target Details

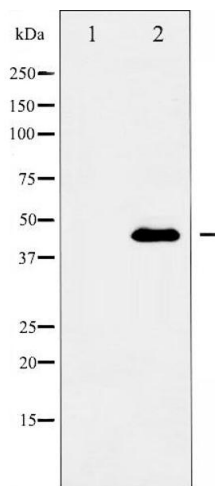
| | |
|-------------------|---|
| Alternative Name: | SERPINB2 (SERPINB2 Products) |
| Target Type: | Amino Acid |
| Background: | Description: Inhibits urokinase-type plasminogen activator. The monocyte derived PAI-2 is distinct from the endothelial cell-derived PAI-1. Gene: SERPINB2 |
| Molecular Weight: | 46 kDa |
| Gene ID: | 5055 |
| UniProt: | P05120 |
| Pathways: | Autophagy |

Application Details

| | |
|--------------------|---|
| Application Notes: | WB 1:500-1:2000, IHC 1:50-1:200, IF/ICC 1:100-1:500, ELISA(peptide) 1:20000-1:40000 |
| Restrictions: | For Research Use only |

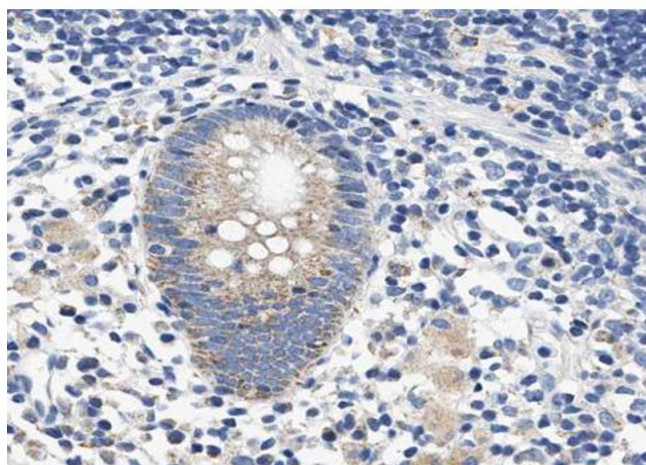
Handling

| | |
|--------------------|--|
| Format: | Liquid |
| Concentration: | 1 mg/mL |
| Buffer: | Rabbit IgG in phosphate buffered saline , pH 7.4, 150 mM NaCl, 0.02 % sodium azide and 50 % glycerol. |
| Preservative: | Sodium azide |
| Precaution of Use: | This product contains Sodium azide: a POISONOUS AND HAZARDOUS SUBSTANCE which should be handled by trained staff only. |
| Storage: | -20 °C |
| Storage Comment: | Store at -20 °C. Stable for 12 months from date of receipt. |
| Expiry Date: | 12 months |



Western Blotting

Image 1. Western blot analysis of PAI 2 expression in MCF-7 cells. The lane on the left is treated with the antigen-specific peptide.



Immunohistochemistry

Image 2. ABIN6268722 at 1/100 staining human Appendix tissue sections by IHC-P. The tissue was formaldehyde fixed and a heat mediated antigen retrieval step in citrate buffer was performed. The tissue was then blocked and incubated with the antibody for 1.5 hours at 22°C. An HRP conjugated goat anti-rabbit antibody was used as the secondary.