



[Go to Product page](#)

Datasheet for ABIN6264035
anti-PTH antibody (Internal Region)

2 Images

Overview

Quantity:	100 µL
Target:	PTH
Binding Specificity:	Internal Region
Reactivity:	Human
Host:	Rabbit
Clonality:	Polyclonal
Conjugate:	This PTH antibody is un-conjugated
Application:	ELISA, Western Blotting (WB), Immunofluorescence (IF), Immunocytochemistry (ICC)

Product Details

Immunogen:	A synthesized peptide derived from human Parathyroid Hormone, corresponding to a region within the internal amino acids.
Isotype:	IgG
Specificity:	Parathyroid Hormone Antibody detects endogenous levels of total Parathyroid Hormone.
Predicted Reactivity:	Pig,Bovine,Horse,Rabbit,Dog
Purification:	The antiserum was purified by peptide affinity chromatography using SulfoLink™ Coupling Resin (Thermo Fisher Scientific).

Target Details

Target:	PTH
---------	-----

Target Details

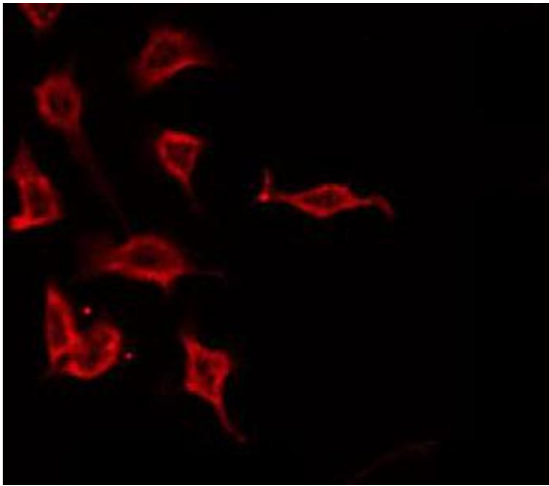
Alternative Name:	PTH (PTH Products)
Target Type:	Hormone
Background:	Description: PTH elevates calcium level by dissolving the salts in bone and preventing their renal excretion. Stimulates [1-14C]-2-deoxy-D-glucose (2DG) transport and glycogen synthesis in osteoblastic cells. Gene: PTH
Molecular Weight:	16kDa
Gene ID:	5741
UniProt:	P01270
Pathways:	cAMP Metabolic Process , Regulation of Carbohydrate Metabolic Process

Application Details

Application Notes:	WB: 1:500-1:3000, IF/ICC 1:100-1:500, ELISA(peptide) 1:20000-1:40000
Restrictions:	For Research Use only

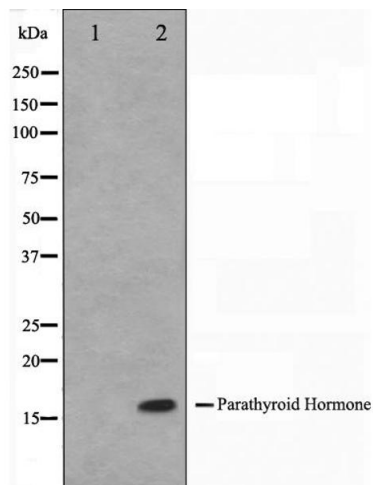
Handling

Format:	Liquid
Concentration:	1 mg/mL
Buffer:	Rabbit IgG in phosphate buffered saline , pH 7.4, 150 mM NaCl, 0.02 % sodium azide and 50 % glycerol.
Preservative:	Sodium azide
Precaution of Use:	This product contains Sodium azide: a POISONOUS AND HAZARDOUS SUBSTANCE which should be handled by trained staff only.
Storage:	-20 °C
Storage Comment:	Store at -20 °C. Stable for 12 months from date of receipt.
Expiry Date:	12 months



Immunofluorescence (fixed cells)

Image 1. ABIN6266613 staining A549 by IF/ICC. The sample were fixed with PFA and permeabilized in 0.1% Triton X-100, then blocked in 10% serum for 45 minutes at 25°C. The primary antibody was diluted at 1/200 and incubated with the sample for 1 hour at 37°C. An Alexa Fluor 594 conjugated goat anti-rabbit IgG (H+L) Ab, diluted at 1/600, was used as the secondary antibody.



Western Blotting

Image 2. Western blot analysis on A549 cell lysate using Parathyroid Hormone Antibody. The lane on the left is treated with the antigen-specific peptide.