

Datasheet for ABIN6264043
anti-PVALB antibody (C-Term)[Go to Product page](#)

3 Images

Overview

Quantity:	100 µL
Target:	PVALB
Binding Specificity:	C-Term
Reactivity:	Human, Rat, Mouse
Host:	Rabbit
Clonality:	Polyclonal
Conjugate:	This PVALB antibody is un-conjugated
Application:	Western Blotting (WB), ELISA, Immunohistochemistry (IHC)

Product Details

Immunogen:	A synthesized peptide derived from human Parvalbumin, corresponding to a region within C-terminal amino acids.
Isotype:	IgG
Specificity:	Parvalbumin Antibody detects endogenous levels of total Parvalbumin.
Predicted Reactivity:	Pig,Bovine,Xenopus
Purification:	The antiserum was purified by peptide affinity chromatography using SulfoLink™ Coupling Resin (Thermo Fisher Scientific).

Target Details

Target:	PVALB
---------	-------

Target Details

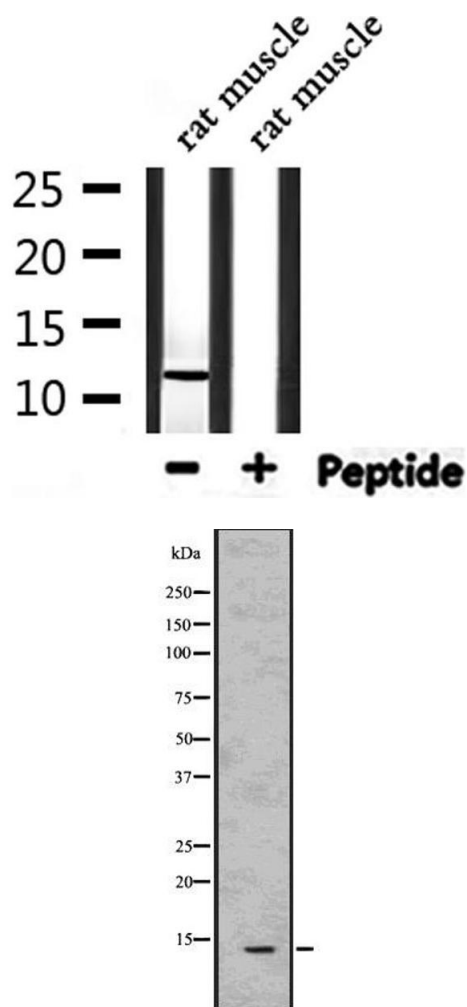
Alternative Name:	PVALB (PVALB Products)
Background:	Description: In muscle, parvalbumin is thought to be involved in relaxation after contraction. It binds two calcium ions. Gene: PVALB
Molecular Weight:	12 kDa.
Gene ID:	5816
UniProt:	P20472

Application Details

Application Notes:	WB 1:1000-3000, IHC 1:200, ELISA(peptide) 1:20000-1:40000
Restrictions:	For Research Use only

Handling

Format:	Liquid
Concentration:	1 mg/mL
Buffer:	Rabbit IgG in phosphate buffered saline , pH 7.4, 150 mM NaCl, 0.02 % sodium azide and 50 % glycerol.
Preservative:	Sodium azide
Precaution of Use:	This product contains Sodium azide: a POISONOUS AND HAZARDOUS SUBSTANCE which should be handled by trained staff only.
Storage:	-20 °C
Storage Comment:	Store at -20 °C. Stable for 12 months from date of receipt.
Expiry Date:	12 months

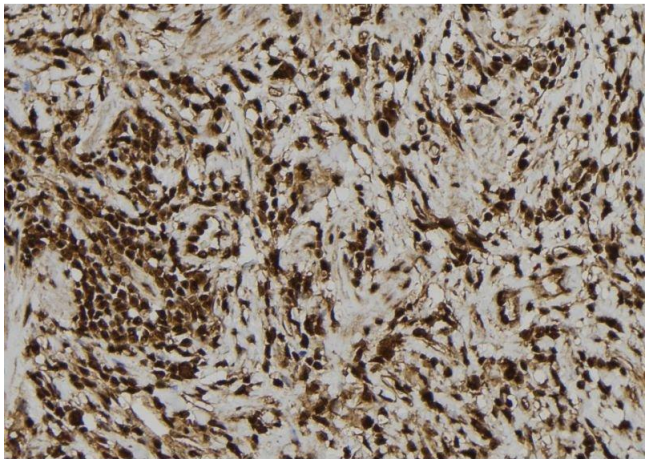


Western Blotting

Image 1. Western blot analysis of extracts from rat muscle, using Parvalbumin Antibody.

Western Blotting

Image 2. Western blot analysis of Parvalbumin using HeLa whole cell lysates



Immunohistochemistry

Image 3. ABIN6277757 at 1/100 staining Human gastric tissue by IHC-P. The sample was formaldehyde fixed and a heat mediated antigen retrieval step in citrate buffer was performed. The sample was then blocked and incubated with the antibody for 1.5 hours at 22°C. An HRP conjugated goat anti-rabbit antibody was used as the secondary