

Datasheet for ABIN6264044
anti-Parvin, beta antibody (C-Term)



[Go to Product page](#)

2 Images

Overview

Quantity:	100 µL
Target:	Parvin, beta (PARVB)
Binding Specificity:	C-Term
Reactivity:	Human, Mouse, Rat
Host:	Rabbit
Clonality:	Polyclonal
Conjugate:	This Parvin, beta antibody is un-conjugated
Application:	Western Blotting (WB), Immunohistochemistry (IHC), Immunofluorescence (IF), Immunocytochemistry (ICC)

Product Details

Immunogen:	A synthesized peptide derived from human PARVB, corresponding to a region within C-terminal amino acids.
Isotype:	IgG
Specificity:	PARVB Antibody detects endogenous levels of total PARVB.
Predicted Reactivity:	Pig,Zebrafish,Bovine,Horse,Sheep,Chicken,Xenopus
Purification:	The antiserum was purified by peptide affinity chromatography using SulfoLink™ Coupling Resin (Thermo Fisher Scientific).

Target Details

Target:	Parvin, beta (PARVB)
---------	----------------------

Target Details

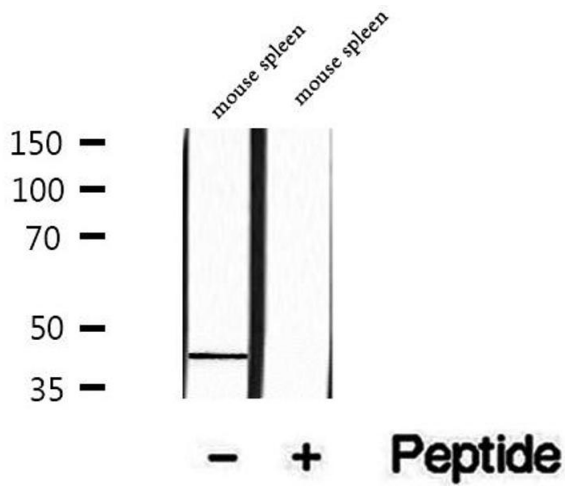
Alternative Name:	PARVB (PARVB Products)
Background:	Description: Adapter protein that plays a role in integrin signaling via ILK and in activation of the GTPases CDC42 and RAC1 by guanine exchange factors, such as ARHGEF6. Is involved in the reorganization of the actin cytoskeleton and formation of lamellipodia. Plays a role in cell adhesion, cell spreading, establishment or maintenance of cell polarity, and cell migration. Gene: PARVB
Molecular Weight:	42 kDa and 45 kDa
Gene ID:	29780
UniProt:	Q9HBI1

Application Details

Application Notes:	WB 1:500-1:2000, IHC 1:50-1:200, IF/ICC 1:100-1:500
Restrictions:	For Research Use only

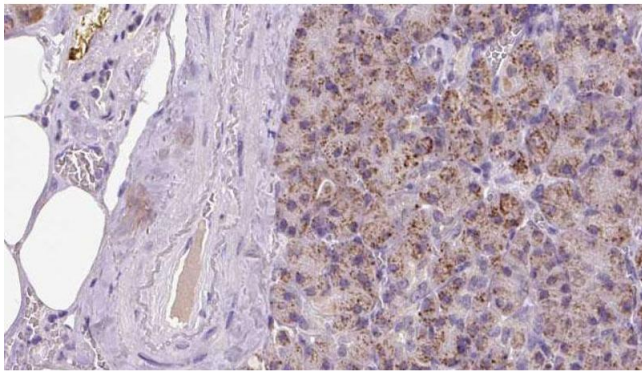
Handling

Format:	Liquid
Concentration:	1 mg/mL
Buffer:	Rabbit IgG in phosphate buffered saline , pH 7.4, 150 mM NaCl, 0.02 % sodium azide and 50 % glycerol.
Preservative:	Sodium azide
Precaution of Use:	This product contains Sodium azide: a POISONOUS AND HAZARDOUS SUBSTANCE which should be handled by trained staff only.
Storage:	-20 °C
Storage Comment:	Store at -20 °C. Stable for 12 months from date of receipt.
Expiry Date:	12 months



Western Blotting

Image 1. Western blot analysis of extracts of mouse spleen tissue, using PARVB antibody.



Immunohistochemistry

Image 2. ABIN6273287 at 1/100 staining Human pancreas cancer tissue by IHC-P. The sample was formaldehyde fixed and a heat mediated antigen retrieval step in citrate buffer was performed. The sample was then blocked and incubated with the antibody for 1.5 hours at 22°C. An HRP conjugated goat anti-rabbit antibody was used as the secondary.