

Datasheet for ABIN6264065
anti-PCCA antibody (C-Term)

3 Images

[Go to Product page](#)

Overview

Quantity:	100 µL
Target:	PCCA
Binding Specificity:	C-Term
Reactivity:	Human, Mouse
Host:	Rabbit
Clonality:	Polyclonal
Application:	Western Blotting (WB), Immunohistochemistry (IHC)

Product Details

Immunogen:	A synthesized peptide derived from human PCCA, corresponding to a region within C-terminal amino acids.
Isotype:	IgG
Specificity:	PCCA Antibody detects endogenous levels of total PCCA.
Predicted Reactivity:	Pig,Zebrafish,Bovine,Horse,Sheep,Dog,Chicken,Xenopus
Purification:	The antiserum was purified by peptide affinity chromatography using SulfoLink™ Coupling Resin (Thermo Fisher Scientific).

Target Details

Target:	PCCA
Alternative Name:	PCCA (PCCA Products)

Target Details

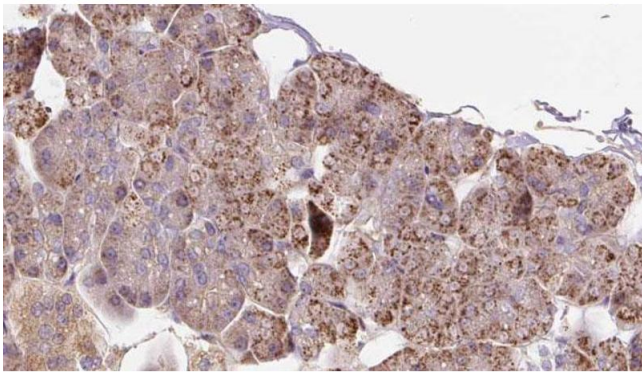
Background:	Description: $\text{ATP} + \text{propanoyl-CoA} + \text{HCO}_3^- = \text{ADP} + \text{phosphate} + (\text{S})\text{-methylmalonyl-CoA}$. Gene: PCCA
Molecular Weight:	70 kDa
Gene ID:	5095
UniProt:	P05165
Pathways:	Monocarboxylic Acid Catabolic Process

Application Details

Application Notes:	WB 1:500-1:2000, IHC 1:50-1:200
Restrictions:	For Research Use only

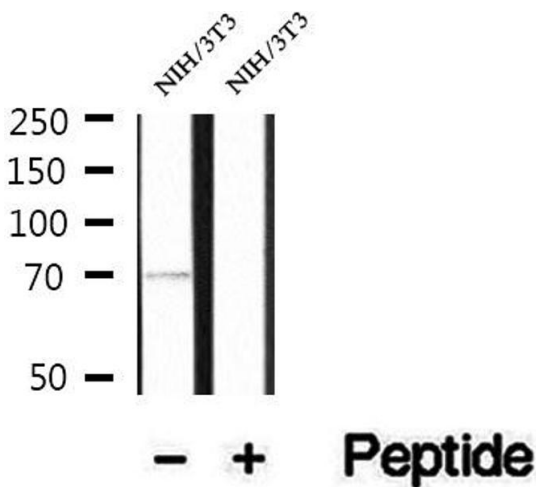
Handling

Format:	Liquid
Concentration:	1 mg/mL
Buffer:	Rabbit IgG in phosphate buffered saline , pH 7.4, 150 mM NaCl, 0.02 % sodium azide and 50 % glycerol.
Preservative:	Sodium azide
Precaution of Use:	This product contains Sodium azide: a POISONOUS AND HAZARDOUS SUBSTANCE which should be handled by trained staff only.
Storage:	-20 °C
Storage Comment:	Store at -20 °C. Stable for 12 months from date of receipt.
Expiry Date:	12 months



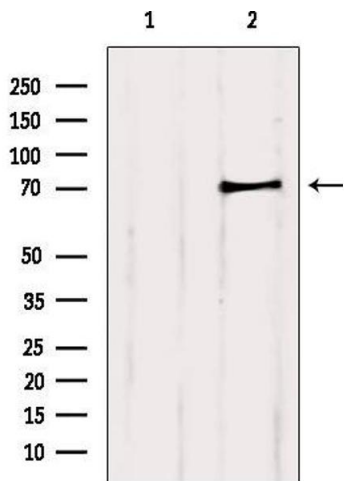
Immunohistochemistry

Image 1. ABIN6273288 at 1/100 staining Human pancreas cancer tissue by IHC-P. The sample was formaldehyde fixed and a heat mediated antigen retrieval step in citrate buffer was performed. The sample was then blocked and incubated with the antibody for 1.5 hours at 22°C. An HRP conjugated goat anti-rabbit antibody was used as the secondary.



Western Blotting

Image 2. Western blot analysis of extracts of NIH/3T3 cells, using PCCA antibody.



Western Blotting

Image 3. Western blot analysis of extracts from 3t3, using PCCA Antibody. Lane 1 was treated with the blocking peptide.