



[Go to Product page](#)

Datasheet for ABIN6264095
anti-PDE6A antibody (N-Term)

1 Image

Overview

Quantity:	100 µL
Target:	PDE6A
Binding Specificity:	N-Term
Reactivity:	Human, Mouse, Rat
Host:	Rabbit
Clonality:	Polyclonal
Conjugate:	This PDE6A antibody is un-conjugated
Application:	Western Blotting (WB), Immunohistochemistry (IHC)

Product Details

Immunogen:	A synthesized peptide derived from human PDE6A, corresponding to a region within N-terminal amino acids.
Isotype:	IgG
Specificity:	PDE6A Antibody detects endogenous levels of total PDE6A.
Predicted Reactivity:	Pig,Bovine,Horse,Sheep,Rabbit,Dog
Purification:	The antiserum was purified by peptide affinity chromatography using SulfoLink™ Coupling Resin (Thermo Fisher Scientific).

Target Details

Target:	PDE6A
---------	-------

Target Details

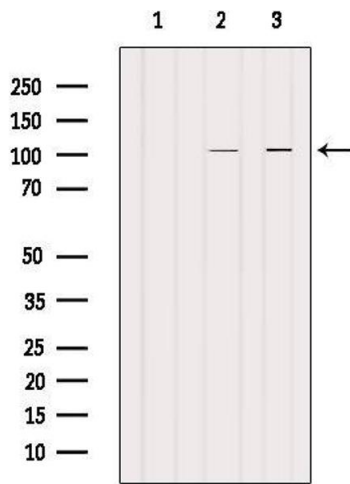
Alternative Name:	PDE6A (PDE6A Products)
Background:	Description: This protein participates in processes of transmission and amplification of the visual signal. Gene: PDE6A
Molecular Weight:	100-110 kDa
Gene ID:	5145
UniProt:	P16499
Pathways:	Regulation of G-Protein Coupled Receptor Protein Signaling, Phototransduction

Application Details

Application Notes:	WB 1:500-1:2000, IHC 1:50-1:200
Restrictions:	For Research Use only

Handling

Format:	Liquid
Concentration:	1 mg/mL
Buffer:	Rabbit IgG in phosphate buffered saline , pH 7.4, 150 mM NaCl, 0.02 % sodium azide and 50 % glycerol.
Preservative:	Sodium azide
Precaution of Use:	This product contains Sodium azide: a POISONOUS AND HAZARDOUS SUBSTANCE which should be handled by trained staff only.
Storage:	-20 °C
Storage Comment:	Store at -20 °C. Stable for 12 months from date of receipt.
Expiry Date:	12 months



Western Blotting

Image 1. Western blot analysis of extracts from various samples, using PDE6A Antibody. Lane 1: Pc12 treated with blocking peptide; Lane 2: Pc12; Lane 3: Mouse brain.