



[Go to Product page](#)

Datasheet for ABIN6264149

anti-PEX16 antibody (Internal Region)

2 Images

Overview

Quantity:	100 µL
Target:	PEX16
Binding Specificity:	Internal Region
Reactivity:	Human, Mouse, Rat
Host:	Rabbit
Clonality:	Polyclonal
Conjugate:	This PEX16 antibody is un-conjugated
Application:	Western Blotting (WB), Immunohistochemistry (IHC), Immunofluorescence (IF), Immunocytochemistry (ICC)

Product Details

Immunogen:	A synthesized peptide derived from human PEX16, corresponding to a region within the internal amino acids.
Isotype:	IgG
Specificity:	PEX16 Antibody detects endogenous levels of total PEX16.
Predicted Reactivity:	Bovine,Horse,Sheep,Rabbit,Dog,Chicken,Xenopus
Purification:	The antiserum was purified by peptide affinity chromatography using SulfoLink™ Coupling Resin (Thermo Fisher Scientific).

Target Details

Target:	PEX16
---------	-------

Target Details

Alternative Name: PEX16 ([PEX16 Products](#))

Background: Description: Required for peroxisome membrane biogenesis. May play a role in early stages of peroxisome assembly. Can recruit other peroxisomal proteins, such as PEX3 and PMP34, to de novo peroxisomes derived from the endoplasmic reticulum (ER). May function as receptor for PEX3.
Gene: PEX16

Molecular Weight: 38 kDa

Gene ID: 9409

UniProt: [Q9Y5Y5](#)

Application Details

Application Notes: WB 1:500-1:2000, IHC 1:50-1:200, IF/ICC 1:100-1:500

Restrictions: For Research Use only

Handling

Format: Liquid

Concentration: 1 mg/mL

Buffer: Rabbit IgG in phosphate buffered saline , pH 7.4, 150 mM NaCl, 0.02 % sodium azide and 50 % glycerol.

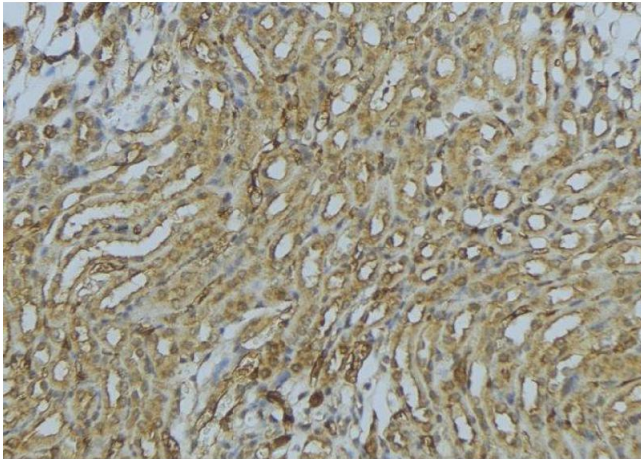
Preservative: Sodium azide

Precaution of Use: This product contains Sodium azide: a POISONOUS AND HAZARDOUS SUBSTANCE which should be handled by trained staff only.

Storage: -20 °C

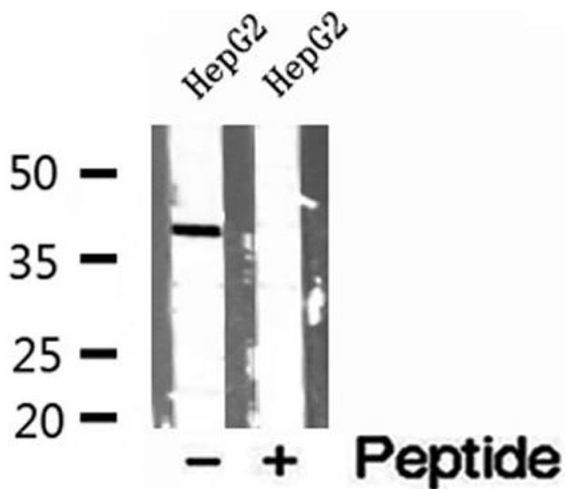
Storage Comment: Store at -20 °C. Stable for 12 months from date of receipt.

Expiry Date: 12 months



Immunohistochemistry

Image 1. ABIN6273012 at 1/100 staining Mouse kidney tissue by IHC-P. The sample was formaldehyde fixed and a heat mediated antigen retrieval step in citrate buffer was performed. The sample was then blocked and incubated with the antibody for 1.5 hours at 22°C. An HRP conjugated goat anti-rabbit antibody was used as the secondary



Western Blotting

Image 2. Western blot analysis of extracts of HepG2 cells, using PEX16 antibody.