

Datasheet for ABIN6264164
anti-PLGF antibody (Internal Region)

4 Images

1 Publication

[Go to Product page](#)

Overview

Quantity:	100 µL
Target:	PLGF (PGF)
Binding Specificity:	Internal Region
Reactivity:	Human, Mouse, Rat
Host:	Rabbit
Clonality:	Polyclonal
Conjugate:	This PLGF antibody is un-conjugated
Application:	Western Blotting (WB), ELISA, Immunohistochemistry (IHC), Immunocytochemistry (ICC), Immunofluorescence (IF)

Product Details

Immunogen:	A synthesized peptide derived from human PGF, corresponding to a region within the internal amino acids.
Isotype:	IgG
Specificity:	PGF Antibody detects endogenous levels of total PGF.
Predicted Reactivity:	Pig,Horse,Rabbit
Purification:	The antiserum was purified by peptide affinity chromatography using SulfoLink™ Coupling Resin (Thermo Fisher Scientific).

Target Details

Target:	PLGF (PGF)
---------	------------

Target Details

Alternative Name:	PGF (PGF Products)
Background:	<p>Description: Growth factor active in angiogenesis and endothelial cell growth, stimulating their proliferation and migration. It binds to the receptor FLT1/VEGFR-1. Isoform PIGF-2 binds NRP1/neuropilin-1 and NRP2/neuropilin-2 in a heparin-dependent manner. Also promotes cell tumor growth.</p> <p>Gene: PGF</p>
Molecular Weight:	24kDa
Gene ID:	5228
UniProt:	P49763
Pathways:	VEGFR1 Specific Signals

Application Details

Application Notes:	WB 1:500-1:2000, IHC 1:50-1:200, IF/ICC 1:100-1:500, ELISA(peptide) 1:20000-1:40000
Restrictions:	For Research Use only

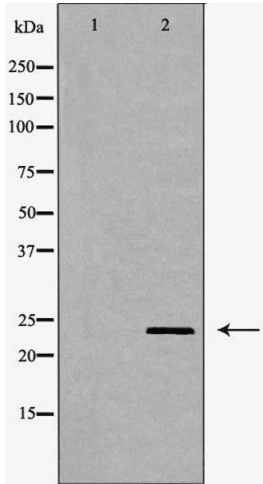
Handling

Format:	Liquid
Concentration:	1 mg/mL
Buffer:	Rabbit IgG in phosphate buffered saline , pH 7.4, 150 mM NaCl, 0.02 % sodium azide and 50 % glycerol.
Preservative:	Sodium azide
Precaution of Use:	This product contains Sodium azide: a POISONOUS AND HAZARDOUS SUBSTANCE which should be handled by trained staff only.
Storage:	-20 °C
Storage Comment:	Store at -20 °C. Stable for 12 months from date of receipt.
Expiry Date:	12 months

Publications

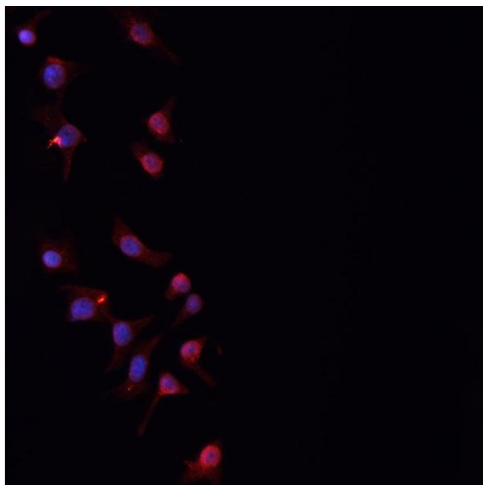
Product cited in:	Zhang, Miao, Li, Cui, Ge, Chen: "S-phase kinase-associated protein 2 impairs the inhibitory effects of miR-1236-3p on bladder tumors." in: American journal of translational research , Vol.
-------------------	---

Images



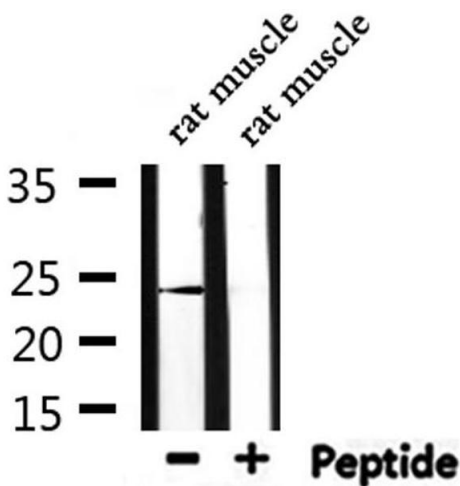
Western Blotting

Image 1. Western blot analysis of HepG2 whole cell lysates, using PGF Antibody. The lane on the left is treated with the antigen-specific peptide.



Immunofluorescence (fixed cells)

Image 2. ABIN6276842 staining HepG2 cells by IF/ICC. The sample were fixed with PFA and permeabilized in 0.1% Triton X-100, then blocked in 10% serum for 45 minutes at 25°C. The primary antibody was diluted at 1/200 and incubated with the sample for 1 hour at 37°C. An Alexa Fluor 594 conjugated goat anti-rabbit IgG (H+L) antibody (Cat.# S0006), diluted at 1/600, was used as secondary antibody.



Western Blotting

Image 3. Western blot analysis of extracts from rat muscle, using PGF Antibody.

Please check the [product details page](#) for more images. Overall 4 images are available for ABIN6264164.