

Datasheet for ABIN6264168  
**anti-PGRMC1 antibody (C-Term)**

## 3 Images

[Go to Product page](#)

## Overview

Quantity:	100 µL
Target:	PGRMC1
Binding Specificity:	C-Term
Reactivity:	Human, Mouse, Rat
Host:	Rabbit
Clonality:	Polyclonal
Conjugate:	This PGRMC1 antibody is un-conjugated
Application:	Western Blotting (WB), Immunohistochemistry (IHC), ELISA

## Product Details

Immunogen:	A synthesized peptide derived from human PGRMC1, corresponding to a region within C-terminal amino acids.
Isotype:	IgG
Specificity:	PGRMC1 Antibody detects endogenous levels of total PGRMC1.
Predicted Reactivity:	Pig,Bovine,Horse,Sheep,Rabbit
Purification:	The antiserum was purified by peptide affinity chromatography using SulfoLink™ Coupling Resin (Thermo Fisher Scientific).

## Target Details

Target:	PGRMC1
---------	--------

## Target Details

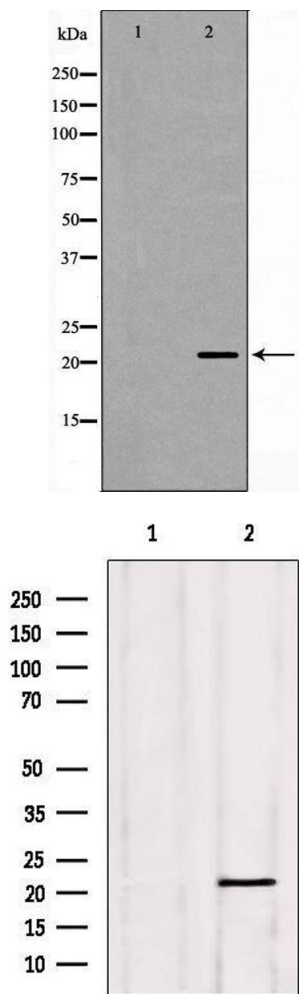
Alternative Name:	PGRMC1 ( <a href="#">PGRMC1 Products</a> )
Background:	Description: Component of a progesterone-binding protein complex (PubMed:28396637). Binds progesterone (PubMed:25675345). Has many reported cellular functions (heme homeostasis, interaction with CYPs). Gene: PGRMC1
Molecular Weight:	21kDa
Gene ID:	10857
UniProt:	<a href="#">O00264</a>

## Application Details

Application Notes:	WB 1:500-1:2000, IHC 1:50-1:200, ELISA(peptide) 1:20000-1:40000
Restrictions:	For Research Use only

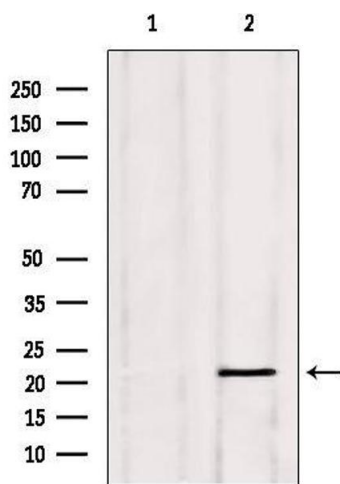
## Handling

Format:	Liquid
Concentration:	1 mg/mL
Buffer:	Rabbit IgG in phosphate buffered saline , pH 7.4, 150 mM NaCl, 0.02 % sodium azide and 50 % glycerol.
Preservative:	Sodium azide
Precaution of Use:	This product contains Sodium azide: a POISONOUS AND HAZARDOUS SUBSTANCE which should be handled by trained staff only.
Storage:	-20 °C
Storage Comment:	Store at -20 °C. Stable for 12 months from date of receipt.
Expiry Date:	12 months



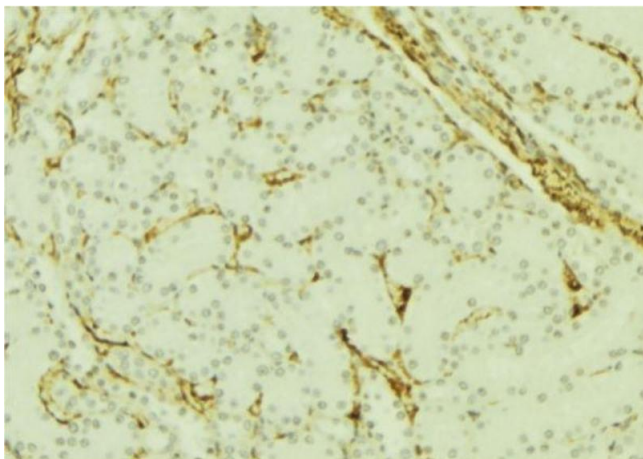
### Western Blotting

**Image 1.** Western blot analysis of Mouse liver tissue lysates, using PGRMC1 Antibody. The lane on the left is treated with the antigen-specific peptide.



### Western Blotting

**Image 2.** Western blot analysis of extracts from Hela, using PGRMC1 Antibody. Lane 1 was treated with the blocking peptide.



### Immunohistochemistry

**Image 3.** ABIN6277664 at 1/100 staining Mouse kidney tissue by IHC-P. The sample was formaldehyde fixed and a heat mediated antigen retrieval step in citrate buffer was performed. The sample was then blocked and incubated with the antibody for 1.5 hours at 22°C. An HRP conjugated goat anti-rabbit antibody was used as the secondary