

Datasheet for ABIN6264177
anti-PHGDH antibody (N-Term)[Go to Product page](#)

3 Images

Overview

Quantity:	100 µL
Target:	PHGDH
Binding Specificity:	N-Term
Reactivity:	Human, Mouse, Rat
Host:	Rabbit
Clonality:	Polyclonal
Conjugate:	This PHGDH antibody is un-conjugated
Application:	Western Blotting (WB), Immunohistochemistry (IHC), Immunofluorescence (IF), Immunocytochemistry (ICC)

Product Details

Immunogen:	A synthesized peptide derived from human PHGDH, corresponding to a region within N-terminal amino acids.
Isotype:	IgG
Specificity:	PHGDH Antibody detects endogenous levels of total PHGDH.
Predicted Reactivity:	Pig,Bovine,Sheep,Rabbit,Dog
Purification:	The antiserum was purified by peptide affinity chromatography using SulfoLink™ Coupling Resin (Thermo Fisher Scientific).

Target Details

Target:	PHGDH
---------	-------

Target Details

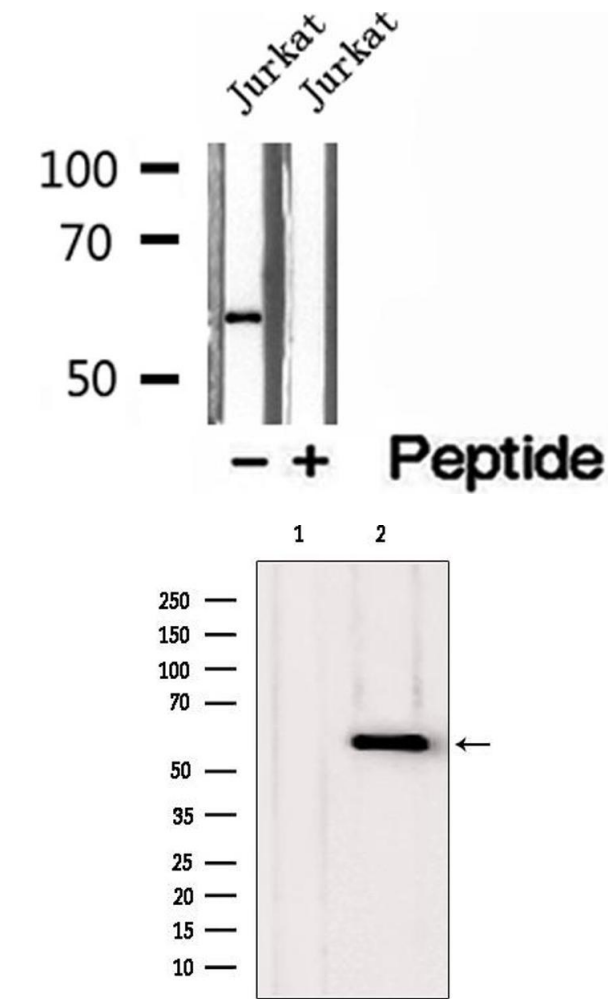
Alternative Name:	PHGDH (PHGDH Products)
Background:	<p>Description: Catalyzes the reversible oxidation of 3-phospho-D-glycerate to 3-phosphonooxypyruvate, the first step of the phosphorylated L-serine biosynthesis pathway.</p> <p>Also catalyzes the reversible oxidation of 2-hydroxyglutarate to 2-oxoglutarate and the reversible oxidation of (S)-malate to oxaloacetate.</p> <p>Gene: PHGDH</p>
Molecular Weight:	57 kDa
Gene ID:	26227
UniProt:	O43175
Pathways:	Metabolism of Steroid Hormones and Vitamin D, Warburg Effect

Application Details

Application Notes:	WB 1:500-1:2000, IHC 1:50-1:200, IF/ICC 1:100-1:500
Restrictions:	For Research Use only

Handling

Format:	Liquid
Concentration:	1 mg/mL
Buffer:	Rabbit IgG in phosphate buffered saline , pH 7.4, 150 mM NaCl, 0.02 % sodium azide and 50 % glycerol.
Preservative:	Sodium azide
Precaution of Use:	This product contains Sodium azide: a POISONOUS AND HAZARDOUS SUBSTANCE which should be handled by trained staff only.
Storage:	-20 °C
Storage Comment:	Store at -20 °C. Stable for 12 months from date of receipt.
Expiry Date:	12 months

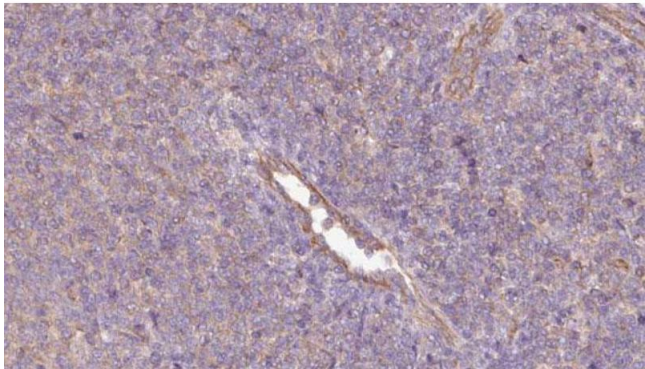


Western Blotting

Image 1. Western blot analysis of extracts of Jurkat cells, using PHGDH antibody.

Western Blotting

Image 2. Western blot analysis of extracts from various samples, using PHGDH antibody. Lane 1: Hela treated with blocking peptide. Lane 2: Hela; Lane 3: Hepg2;



Immunohistochemistry

Image 3. ABIN6273064 at 1/100 staining Human lymph cancer tissue by IHC-P. The sample was formaldehyde fixed and a heat mediated antigen retrieval step in citrate buffer was performed. The sample was then blocked and incubated with the antibody for 1.5 hours at 22°C. An HRP conjugated goat anti-rabbit antibody was used as the secondary.