

Datasheet for ABIN6264204
anti-PIGC antibody (Internal Region)[Go to Product page](#)

4 Images

Overview

| | |
|----------------------|--|
| Quantity: | 100 µL |
| Target: | PIGC |
| Binding Specificity: | Internal Region |
| Reactivity: | Human, Mouse, Rat |
| Host: | Rabbit |
| Clonality: | Polyclonal |
| Conjugate: | This PIGC antibody is un-conjugated |
| Application: | ELISA, Western Blotting (WB), Immunohistochemistry (IHC) |

Product Details

| | |
|-----------------------|---|
| Immunogen: | A synthesized peptide derived from human PIGC, corresponding to a region within the internal amino acids. |
| Isotype: | IgG |
| Specificity: | PIGC Antibody detects endogenous levels of total PIGC. |
| Predicted Reactivity: | Pig,Bovine,Sheep,Rabbit,Dog,Chicken |
| Purification: | The antiserum was purified by peptide affinity chromatography using SulfoLink™ Coupling Resin (Thermo Fisher Scientific). |

Target Details

| | |
|---------|------|
| Target: | PIGC |
|---------|------|

Target Details

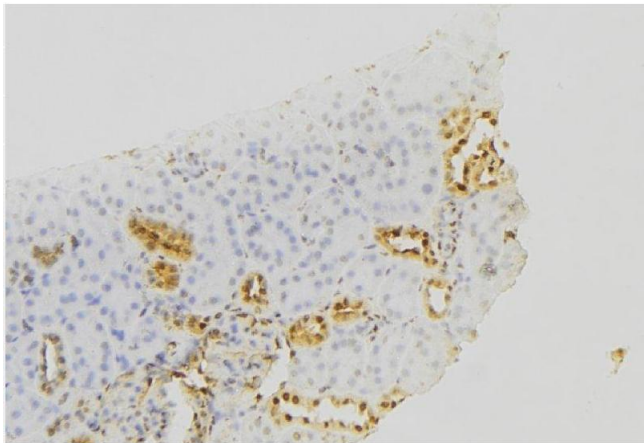
| | |
|-------------------|---|
| Alternative Name: | PIGC (PIGC Products) |
| Background: | Description: Part of the complex catalyzing the transfer of N-acetylglucosamine from UDP-N-acetylglucosamine to phosphatidylinositol, the first step of GPI biosynthesis. Gene: PIGC |
| Molecular Weight: | 34 kDa |
| Gene ID: | 5279 |
| UniProt: | Q92535 |
| Pathways: | Inositol Metabolic Process |

Application Details

| | |
|--------------------|---|
| Application Notes: | WB 1:1000-3000, IHC 1:200, ELISA(peptide) 1:20000-1:40000 |
| Restrictions: | For Research Use only |

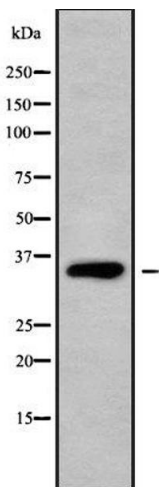
Handling

| | |
|--------------------|--|
| Format: | Liquid |
| Concentration: | 1 mg/mL |
| Buffer: | Rabbit IgG in phosphate buffered saline , pH 7.4, 150 mM NaCl, 0.02 % sodium azide and 50 % glycerol. |
| Preservative: | Sodium azide |
| Precaution of Use: | This product contains Sodium azide: a POISONOUS AND HAZARDOUS SUBSTANCE which should be handled by trained staff only. |
| Storage: | -20 °C |
| Storage Comment: | Store at -20 °C. Stable for 12 months from date of receipt. |
| Expiry Date: | 12 months |



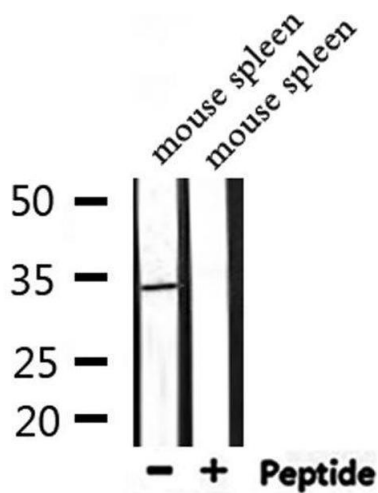
Immunohistochemistry

Image 1. ABIN6279655 at 1/100 staining Mouse kidney tissue by IHC-P. The sample was formaldehyde fixed and a heat mediated antigen retrieval step in citrate buffer was performed. The sample was then blocked and incubated with the antibody for 1.5 hours at 22°C. An HRP conjugated goat anti-rabbit antibody was used as the secondary



Western Blotting

Image 2. Western blot analysis of PIGC using HT29 whole cell lysates



Western Blotting

Image 3. Western blot analysis of extracts from mouse spleen, using PIGC Antibody.

Please check the [product details page](#) for more images. Overall 4 images are available for ABIN6264204.