

Datasheet for ABIN6264251
anti-ZMYND8 antibody (Internal Region)[Go to Product page](#)

3 Images

Overview

Quantity:	100 µL
Target:	ZMYND8
Binding Specificity:	Internal Region
Reactivity:	Human, Mouse
Host:	Rabbit
Clonality:	Polyclonal
Conjugate:	This ZMYND8 antibody is un-conjugated
Application:	Western Blotting (WB), ELISA, Immunohistochemistry (IHC), Immunofluorescence (IF), Immunocytochemistry (ICC)

Product Details

Immunogen:	A synthesized peptide derived from human PKCB1, corresponding to a region within the internal amino acids.
Isotype:	IgG
Specificity:	PKCB1 Antibody detects endogenous levels of total PKCB1.
Predicted Reactivity:	Pig,Bovine,Dog
Purification:	The antiserum was purified by peptide affinity chromatography using SulfoLink™ Coupling Resin (Thermo Fisher Scientific).

Target Details

Target:	ZMYND8
---------	--------

Target Details

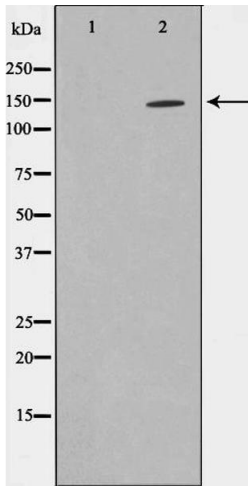
Alternative Name:	ZMYND8 (ZMYND8 Products)
Background:	<p>Description: May act as a transcriptional corepressor for KDM5D. Required for KDM5D-mediated down-regulation of diverse metastasis-associated genes, the function seems to involve the recognition of the dual histone signature H3K4me1-H3K14ac. Suppresses prostate cancer cell invasion.</p> <p>Gene: ZMYND8</p>
Molecular Weight:	132kDa
Gene ID:	23613
UniProt:	Q9ULU4

Application Details

Application Notes:	WB 1:500-1:2000, IF/ICC 1:100-1:500, IHC 1:50-1:200, ELISA(peptide) 1:20000-1:40000
Restrictions:	For Research Use only

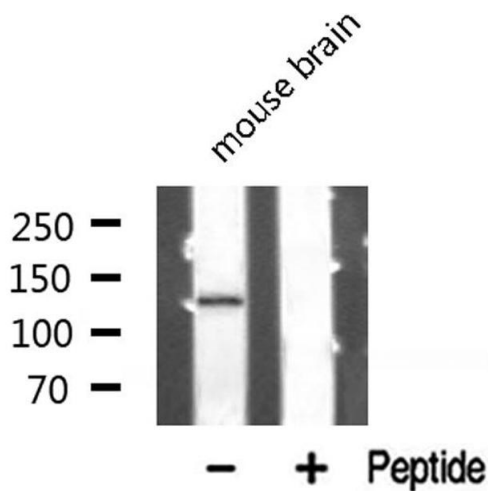
Handling

Format:	Liquid
Concentration:	1 mg/mL
Buffer:	Rabbit IgG in phosphate buffered saline , pH 7.4, 150 mM NaCl, 0.02 % sodium azide and 50 % glycerol.
Preservative:	Sodium azide
Precaution of Use:	This product contains Sodium azide: a POISONOUS AND HAZARDOUS SUBSTANCE which should be handled by trained staff only.
Storage:	-20 °C
Storage Comment:	Store at -20 °C. Stable for 12 months from date of receipt.
Expiry Date:	12 months



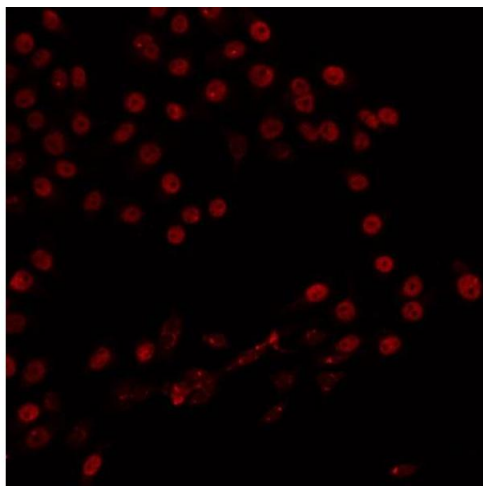
Western Blotting

Image 1. Western blot analysis on 293 cell lysate using PKCB1 Antibody, The lane on the left is treated with the antigen-specific peptide.



Western Blotting

Image 2. Western blot analysis of PKCB1 expression in Mouse brain lysate



Immunofluorescence (fixed cells)

Image 3. ABIN6266824 staining 293 by IF/ICC. The sample were fixed with PFA and permeabilized in 0.1% Triton X-100, then blocked in 10% serum for 45 minutes at 25°C. The primary antibody was diluted at 1/200 and incubated with the sample for 1 hour at 37°C. An Alexa Fluor 594 conjugated goat anti-rabbit IgG (H+L) Ab, diluted at 1/600, was used as the secondary antibody.