

Datasheet for ABIN6264269

anti-Plakophilin 3 antibody (C-Term)**2** Images[Go to Product page](#)

Overview

Quantity:	100 µL
Target:	Plakophilin 3 (PKP3)
Binding Specificity:	C-Term
Reactivity:	Human, Mouse
Host:	Rabbit
Clonality:	Polyclonal
Conjugate:	This Plakophilin 3 antibody is un-conjugated
Application:	Western Blotting (WB), ELISA, Immunohistochemistry (IHC), Immunofluorescence (IF), Immunocytochemistry (ICC)

Product Details

Immunogen:	A synthesized peptide derived from human PKP3, corresponding to a region within C-terminal amino acids.
Isotype:	IgG
Specificity:	PKP3 Antibody detects endogenous levels of total PKP3.
Predicted Reactivity:	Pig,Bovine,Sheep,Dog,Chicken
Purification:	The antiserum was purified by peptide affinity chromatography using SulfoLink™ Coupling Resin (Thermo Fisher Scientific).

Target Details

Target:	Plakophilin 3 (PKP3)
---------	----------------------

Target Details

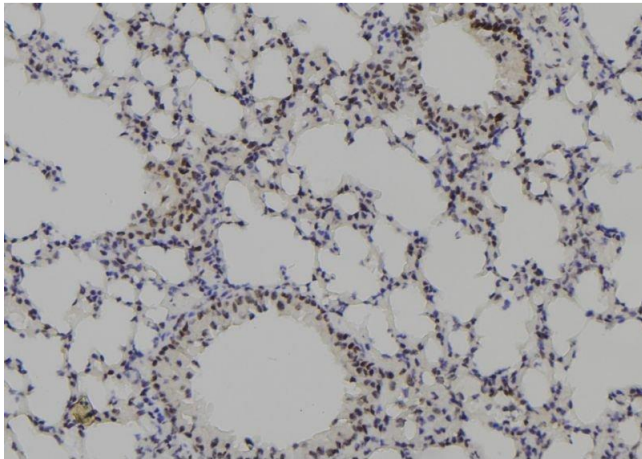
Alternative Name:	PKP3 (PKP3 Products)
Background:	Description: May play a role in junctional plaques. Gene: PKP3
Molecular Weight:	87 kDa
Gene ID:	11187
UniProt:	Q9Y446

Application Details

Application Notes:	WB 1:1000-3000, IHC 1:200, IF/ICC 1:100-1:500, ELISA(peptide) 1:20000-1:40000
Restrictions:	For Research Use only

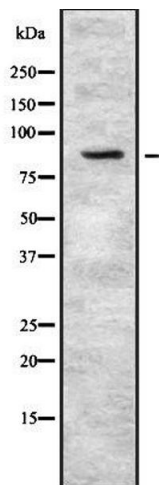
Handling

Format:	Liquid
Concentration:	1 mg/mL
Buffer:	Rabbit IgG in phosphate buffered saline , pH 7.4, 150 mM NaCl, 0.02 % sodium azide and 50 % glycerol.
Preservative:	Sodium azide
Precaution of Use:	This product contains Sodium azide: a POISONOUS AND HAZARDOUS SUBSTANCE which should be handled by trained staff only.
Storage:	-20 °C
Storage Comment:	Store at -20 °C. Stable for 12 months from date of receipt.
Expiry Date:	12 months



Immunohistochemistry

Image 1. ABIN6278303 at 1/100 staining Mouse lung tissue by IHC-P. The sample was formaldehyde fixed and a heat mediated antigen retrieval step in citrate buffer was performed. The sample was then blocked and incubated with the antibody for 1.5 hours at 22°C. An HRP conjugated goat anti-rabbit antibody was used as the secondary



Western Blotting

Image 2. Western blot analysis of PKP3 using K562 whole cell lysates