

Datasheet for ABIN6264276
anti-PLA2G4F antibody (C-Term)[Go to Product page](#)

3 Images

Overview

Quantity:	100 µL
Target:	PLA2G4F
Binding Specificity:	C-Term
Reactivity:	Human, Mouse
Host:	Rabbit
Clonality:	Polyclonal
Conjugate:	This PLA2G4F antibody is un-conjugated
Application:	ELISA, Western Blotting (WB), Immunohistochemistry (IHC)

Product Details

Immunogen:	A synthesized peptide derived from human PLA2G4F, corresponding to a region within C-terminal amino acids.
Isotype:	IgG
Specificity:	PLA2G4F Antibody detects endogenous levels of total PLA2G4F.
Predicted Reactivity:	Pig,Bovine,Horse,Sheep,Dog
Purification:	The antiserum was purified by peptide affinity chromatography using SulfoLink™ Coupling Resin (Thermo Fisher Scientific).

Target Details

Target:	PLA2G4F
---------	---------

Target Details

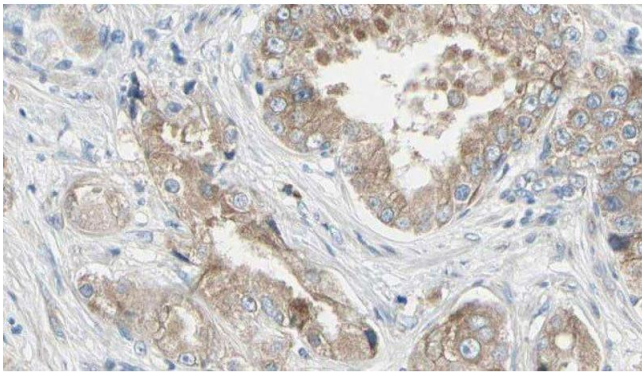
Alternative Name:	PLA2G4F (PLA2G4F Products)
Background:	Description: Calcium-dependent phospholipase A2 that selectively hydrolyzes glycerophospholipids in the sn-2 position. Has higher enzyme activity for phosphatidylethanolamine than phosphatidylcholine (By similarity). Gene: PLA2G4F
Molecular Weight:	95 kDa
Gene ID:	255189
UniProt:	Q68DD2

Application Details

Application Notes:	WB 1:1000-3000, IHC 1:200, ELISA(peptide) 1:20000-1:40000
Restrictions:	For Research Use only

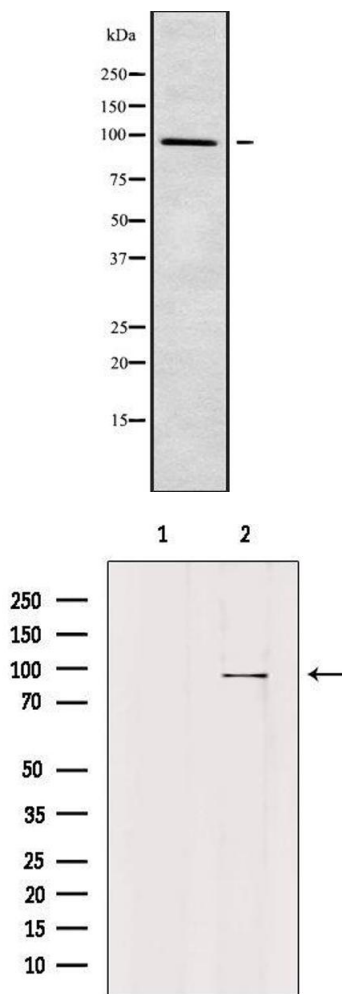
Handling

Format:	Liquid
Concentration:	1 mg/mL
Buffer:	Rabbit IgG in phosphate buffered saline , pH 7.4, 150 mM NaCl, 0.02 % sodium azide and 50 % glycerol.
Preservative:	Sodium azide
Precaution of Use:	This product contains Sodium azide: a POISONOUS AND HAZARDOUS SUBSTANCE which should be handled by trained staff only.
Storage:	-20 °C
Storage Comment:	Store at -20 °C. Stable for 12 months from date of receipt.
Expiry Date:	12 months



Immunohistochemistry

Image 1. ABIN6279342 at 1/100 staining Human prostate tissue by IHC-P. The sample was formaldehyde fixed and a heat mediated antigen retrieval step in citrate buffer was performed. The sample was then blocked and incubated with the antibody for 1.5 hours at 22°C. An HRP conjugated goat anti-rabbit antibody was used as the secondary



Western Blotting

Image 2. Western blot analysis of PLA2G4F using 293 whole cell lysates

Western Blotting

Image 3. Western blot analysis of extracts from HepG2, using PLA2G4F Antibody. Lane 1 was treated with the blocking peptide.