



[Go to Product page](#)

Datasheet for ABIN6264284

anti-PLCD1 antibody (N-Term)

1 Image

Overview

Quantity:	100 µL
Target:	PLCD1
Binding Specificity:	N-Term
Reactivity:	Human, Mouse, Rat
Host:	Rabbit
Clonality:	Polyclonal
Conjugate:	This PLCD1 antibody is un-conjugated
Application:	Western Blotting (WB), ELISA, Immunohistochemistry (IHC)

Product Details

Immunogen:	A synthesized peptide derived from human PLCD1, corresponding to a region within N-terminal amino acids.
Isotype:	IgG
Specificity:	PLCD1 Antibody detects endogenous levels of total PLCD1.
Predicted Reactivity:	Pig,Bovine,Horse,Sheep,Dog,Chicken
Purification:	The antiserum was purified by peptide affinity chromatography using SulfoLink™ Coupling Resin (Thermo Fisher Scientific).

Target Details

Target:	PLCD1
---------	-------

Target Details

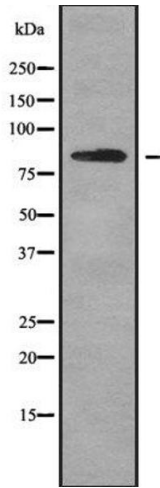
Alternative Name:	PLCD1 (PLCD1 Products)
Background:	Description: The production of the second messenger molecules diacylglycerol (DAG) and inositol 1,4,5-trisphosphate (IP3) is mediated by activated phosphatidylinositol-specific phospholipase C enzymes. Essential for trophoblast and placental development. Gene: PLCD1
Molecular Weight:	86 kDa
Gene ID:	5333
UniProt:	P51178
Pathways:	WNT Signaling, Myometrial Relaxation and Contraction, Regulation of Carbohydrate Metabolic Process

Application Details

Application Notes:	WB 1:1000-3000, IHC 1:50-1:200, ELISA(peptide) 1:20000-1:40000
Restrictions:	For Research Use only

Handling

Format:	Liquid
Concentration:	1 mg/mL
Buffer:	Rabbit IgG in phosphate buffered saline , pH 7.4, 150 mM NaCl, 0.02 % sodium azide and 50 % glycerol.
Preservative:	Sodium azide
Precaution of Use:	This product contains Sodium azide: a POISONOUS AND HAZARDOUS SUBSTANCE which should be handled by trained staff only.
Storage:	-20 °C
Storage Comment:	Store at -20 °C. Stable for 12 months from date of receipt.
Expiry Date:	12 months



Western Blotting

Image 1. Western blot analysis of PLCD1 using K562 whole cell lysates