



[Go to Product page](#)

Datasheet for ABIN6264299
anti-Pallidin antibody (C-Term)

3 Images

Overview

Quantity:	100 µL
Target:	Pallidin (PLDN)
Binding Specificity:	C-Term
Reactivity:	Human, Mouse, Rat
Host:	Rabbit
Clonality:	Polyclonal
Conjugate:	This Pallidin antibody is un-conjugated
Application:	Western Blotting (WB), Immunohistochemistry (IHC)

Product Details

Immunogen:	A synthesized peptide derived from human PLDN, corresponding to a region within C-terminal amino acids.
Isotype:	IgG
Specificity:	PLDN Antibody detects endogenous levels of total PLDN.
Predicted Reactivity:	Pig,Bovine,Horse,Sheep,Rabbit,Dog,Chicken,Xenopus
Purification:	The antiserum was purified by peptide affinity chromatography using SulfoLink™ Coupling Resin (Thermo Fisher Scientific).

Target Details

Target:	Pallidin (PLDN)
---------	-----------------

Target Details

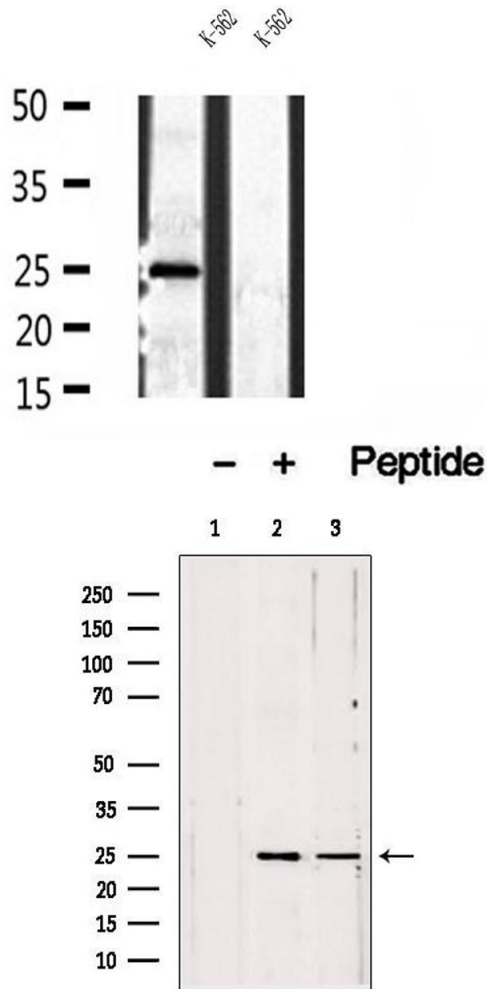
Alternative Name:	BLOC1S6 (PLDN Products)
Background:	<p>Description: Component of the BLOC-1 complex, a complex that is required for normal biogenesis of lysosome-related organelles (LRO), such as platelet dense granules and melanosomes. In concert with the AP-3 complex, the BLOC-1 complex is required to target membrane protein cargos into vesicles assembled at cell bodies for delivery into neurites and nerve terminals. The BLOC-1 complex, in association with SNARE proteins, is also proposed to be involved in neurite extension. May play a role in intracellular vesicle trafficking, particularly in the vesicle-docking and fusion process.</p> <p>Gene: BLOC1S6</p>
Molecular Weight:	25 kDa
Gene ID:	26258
UniProt:	Q9UL45
Pathways:	Synaptic Vesicle Exocytosis

Application Details

Application Notes:	WB 1:500-1:2000, IHC 1:50-1:200
Restrictions:	For Research Use only

Handling

Format:	Liquid
Concentration:	1 mg/mL
Buffer:	Rabbit IgG in phosphate buffered saline , pH 7.4, 150 mM NaCl, 0.02 % sodium azide and 50 % glycerol.
Preservative:	Sodium azide
Precaution of Use:	This product contains Sodium azide: a POISONOUS AND HAZARDOUS SUBSTANCE which should be handled by trained staff only.
Storage:	-20 °C
Storage Comment:	Store at -20 °C. Stable for 12 months from date of receipt.
Expiry Date:	12 months



Western Blotting

Image 1. Western blot analysis of extracts of K-562 cells, using PLDN antibody.

Western Blotting

Image 2. Western blot analysis of extracts from various samples, using PLDN antibody. Lane 1: HepG2 treated with blocking peptide. Lane 2: HepG2; Lane 3: 293;

Immunohistochemistry

Image 3. ABIN6272885 at 1/100 staining Mouse colon tissue by IHC-P. The sample was formaldehyde fixed and a heat mediated antigen retrieval step in citrate buffer was performed. The sample was then blocked and incubated with the antibody for 1.5 hours at 22°C. An HRP conjugated goat anti-rabbit antibody was used as the secondary.

