

Datasheet for ABIN6264311
anti-BPIFA1 antibody (Internal Region)[Go to Product page](#)

2 Images

Overview

Quantity:	100 µL
Target:	BPIFA1
Binding Specificity:	Internal Region
Reactivity:	Human, Rat
Host:	Rabbit
Clonality:	Polyclonal
Conjugate:	This BPIFA1 antibody is un-conjugated
Application:	Western Blotting (WB), ELISA, Immunohistochemistry (IHC)

Product Details

Immunogen:	A synthesized peptide derived from human PLUNC, corresponding to a region within the internal amino acids.
Isotype:	IgG
Specificity:	PLUNC Antibody detects endogenous levels of total PLUNC.
Purification:	The antiserum was purified by peptide affinity chromatography using SulfoLink™ Coupling Resin (Thermo Fisher Scientific).

Target Details

Target:	BPIFA1
Alternative Name:	BPIFA1 (BPIFA1 Products)

Target Details

Background:	<p>Description: Plays a role in the innate immune responses of the upper airways. Reduces the surface tension in secretions from airway epithelia and inhibits the formation of biofilm by pathogenic Gram-negative bacteria, such as <i>P.aeruginosa</i> and <i>K.pneumoniae</i>. Binds bacterial lipopolysaccharide (LPS). Negatively regulates proteolytic cleavage of SCNN1G, an event that is required for activation of the epithelial sodium channel (ENaC), and thereby contributes to airway surface liquid homeostasis and proper clearance of mucus. Plays a role in the airway inflammatory response after exposure to irritants. May attract macrophages and neutrophils. May be associated with tumor progression.</p> <p>Gene: BPIFA1</p>
-------------	--

Molecular Weight:	27 kDa
-------------------	--------

Gene ID:	51297
----------	-------

UniProt:	Q9NP55
----------	------------------------

Application Details

Application Notes:	WB 1:1000-3000, IHC 1:200, ELISA(peptide) 1:20000-1:40000
--------------------	---

Restrictions:	For Research Use only
---------------	-----------------------

Handling

Format:	Liquid
---------	--------

Concentration:	1 mg/mL
----------------	---------

Buffer:	Rabbit IgG in phosphate buffered saline , pH 7.4, 150 mM NaCl, 0.02 % sodium azide and 50 % glycerol.
---------	---

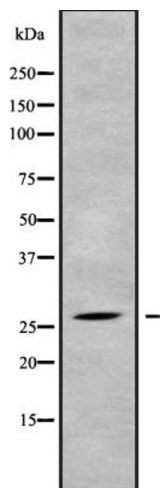
Preservative:	Sodium azide
---------------	--------------

Precaution of Use:	This product contains Sodium azide: a POISONOUS AND HAZARDOUS SUBSTANCE which should be handled by trained staff only.
--------------------	--

Storage:	-20 °C
----------	--------

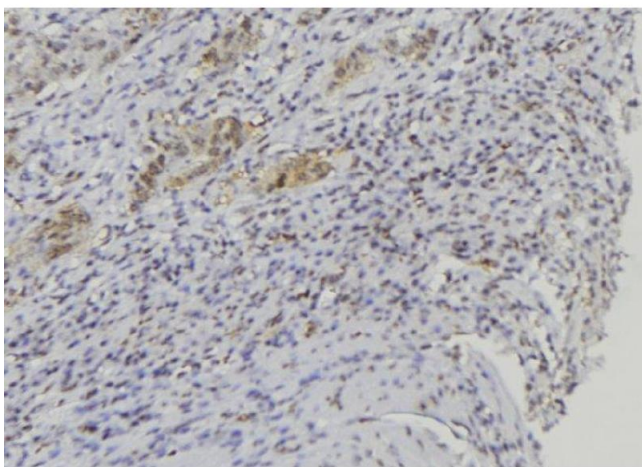
Storage Comment:	Store at -20 °C. Stable for 12 months from date of receipt.
------------------	---

Expiry Date:	12 months
--------------	-----------



Western Blotting

Image 1. Western blot analysis of PLUNC using 293 whole cell lysates



Immunohistochemistry

Image 2. ABIN6272660 at 1/100 staining Human lung cancer tissue by IHC-P. The sample was formaldehyde fixed and a heat mediated antigen retrieval step in citrate buffer was performed. The sample was then blocked and incubated with the antibody for 1.5 hours at 22°C. An HRP conjugated goat anti-rabbit antibody was used as the secondary