



Datasheet for ABIN6264314
anti-Melanoma gp100 antibody (C-Term)



[Go to Product page](#)

3 Images

Overview

Quantity:	100 µL
Target:	Melanoma gp100 (PMEL)
Binding Specificity:	C-Term
Reactivity:	Human, Mouse
Host:	Rabbit
Clonality:	Polyclonal
Conjugate:	This Melanoma gp100 antibody is un-conjugated
Application:	Immunofluorescence (IF), Immunohistochemistry (IHC), Western Blotting (WB), ELISA, Immunocytochemistry (ICC)

Product Details

Immunogen:	A synthesized peptide derived from human PMEL17 / GP100, corresponding to a region within C-terminal amino acids.
Isotype:	IgG
Specificity:	PMEL17 / GP100 Antibody detects endogenous levels of total PMEL17 / GP100.
Predicted Reactivity:	Pig,Bovine,Horse,Sheep,Dog,Chicken,Xenopus
Purification:	The antiserum was purified by peptide affinity chromatography using SulfoLink™ Coupling Resin (Thermo Fisher Scientific).

Target Details

Target:	Melanoma gp100 (PMEL)
---------	-----------------------

Target Details

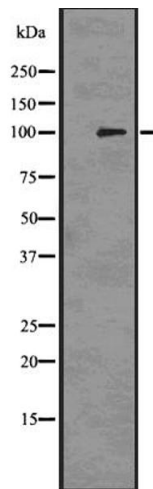
Alternative Name:	PMEL (PMEL Products)
Background:	<p>Description: Plays a central role in the biogenesis of melanosomes. Involved in the maturation of melanosomes from stage I to II. The transition from stage I melanosomes to stage II melanosomes involves an elongation of the vesicle, and the appearance within of distinct fibrillar structures. Release of the soluble form, ME20-S, could protect tumor cells from antibody mediated immunity.</p> <p>Gene: PMEL</p>
Molecular Weight:	100kDa
Gene ID:	6490
UniProt:	P40967

Application Details

Application Notes:	WB 1:1000-3000, IHC 1:200, IF/ICC 1:100-1:500, ELISA(peptide) 1:20000-1:40000
Restrictions:	For Research Use only

Handling

Format:	Liquid
Concentration:	1 mg/mL
Buffer:	Rabbit IgG in phosphate buffered saline , pH 7.4, 150 mM NaCl, 0.02 % sodium azide and 50 % glycerol.
Preservative:	Sodium azide
Precaution of Use:	This product contains Sodium azide: a POISONOUS AND HAZARDOUS SUBSTANCE which should be handled by trained staff only.
Storage:	-20 °C
Storage Comment:	Store at -20 °C. Stable for 12 months from date of receipt.
Expiry Date:	12 months



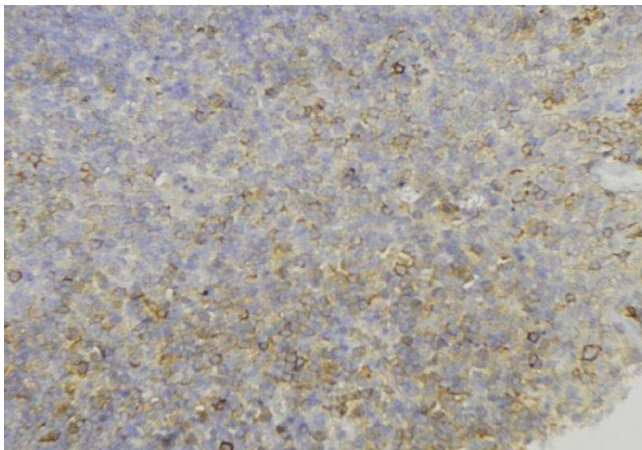
Western Blotting

Image 1. Western blot analysis of PMEL17 / GP100 using 293 whole cell lysates



Immunofluorescence (fixed cells)

Image 2. ABIN6274038 staining HepG2 by IF/ICC. The sample were fixed with PFA and permeabilized in 0.1% Triton X-100, then blocked in 10% serum for 45 minutes at 25°C. The primary antibody was diluted at 1/200 and incubated with the sample for 1 hour at 37°C. An Alexa Fluor 594 conjugated goat anti-rabbit IgG (H+L) Ab, diluted at 1/600, was used as the secondary antibody.



Immunohistochemistry

Image 3. ABIN6274038 at 1/100 staining Human lymph node tissue by IHC-P. The sample was formaldehyde fixed and a heat mediated antigen retrieval step in citrate buffer was performed. The sample was then blocked and incubated with the antibody for 1.5 hours at 22°C. An HRP conjugated goat anti-rabbit antibody was used as the secondary